



PROFILE 2024



Copyrights reserved to WATAN © 2023

About WATAN	4
WATAN History	6
WATAN Framework	8
Theory of Change	9
Knowledge Incremental Methodology	9
WATAN Impact	10
WATAN Sectors	12
1. Third Sector and Institution Support Sector	13
2. Protection Sector	17
3. Education and Youth Sector	21
4. Economic Empowerment Sector	26
5. Food Security & Livelihoods Sector	30
6. Health Sector	35
7. Water Sanitation and Hygiene Sector	40
8. Shelter Sector	44
9. non-food aid Sector	48
WATAN Conventions	52
Path to Progress	53
Accounting Principles	54

Index



About Us

WATAN is a leading Civil Society Organization delivering emergency relief, third-sector support, and long-term international development projects.

WATAN is committed to helping people and reviving communities. WATAN is an independent, non-governmental, apolitical, and non-sectarian organization.

We operate several integrated sectors with the aim of addressing humanitarian emergency response and sustainable community revival through a holistic and transformative approach.

We believe in the role of Civil Society in the various phases of intervention. Thus, we invest in supporting and developing Civil Society in our areas of reach. We also create platforms for coordination and integration to maximize impact on communities served. To achieve our goal, we seek to be the preferred partner for international agencies in areas of specialization and reach.

WATAN was established in 2012 as a framework merging a number of organizations and groups that had extensive community development work going back to 2006.

Mission

Our mission is to develop a sustainable, healthy, and educated community, based on an inclusive society that positively engages, supports, and improves the lives of each individual, regardless of their gender, faith, or ethnicity. We deliver sectors that rebuild lives and maintain community social cohesion by providing transformative sectors in reliefs, post-conflict-peace-building, education, economic empowerment, advocacy, and development of a strong Civil Society.

Vision

Free and dignified world based on tolerance, respect, and social justice.

Purpose

To help nations heal, learn and prosper.

Our Culture

Well run organization, innovative, strong partnerships, collaborative, always-learning, independent, committed.

Focus

We put communities in the center because we know that fragmented intervention would not lead to a sustainable impact.

Values

Creativity, Transparency, Partnership, Respect

WATAN History

2006

Syrian Business Club

- The founder, Moaz Al-Siboi, started a network for young Syrian professionals in the diaspora.
- 2008, Syrian Business Club - Growth
- A total of 200 annual events were held.
- Activities held included professional skills training and networking events.

2011

The Syrian Dream and SYAN

- In early 2011, The Syrian Dream was established. The project aimed to advocate peaceful positive change. As the war started, the group became a strong media voice for Syrians.
- In parallel, SYAN was launched and held a conference for the Syrian civil community in July 2011, which was the seed for WATAN Network

Inside-Syria, Lebanon-based, and Lebanon cross-border humanitarian operations helped WATAN leads several and psychosocial programs.

2012

Founding Conference Re-Branding WATAN

- In early 2012, the number of volunteers exceeded 1000, and 30+ volunteer teams worldwide.
- This prompted the founder to call several preparatory meetings to join the efforts. This was crowned by launching the organization under the new name of "WATAN" which covers 8 organizations.
- All 8 organizations were registered in the UK and then in Turkey.

2013

Gaziantep & Globally

- WATAN Conference: Activists today... Pioneers of institutions of civil society tomorrow, with 1000+ attendees.
- A regional cross-border office opened in Gaziantep.
- Opening the first school for the displaced inside Syria.
- Established 2 psychotherapy centers in Lebanon, benefiting 10,700 individuals through collaboration with OTI and US AID.
- WATAN's Network was launched (Empowerment - Excellence - Sustainability Participatory Approach).
- Afoq a new institute was established under We to support university students.

2014

Mature Turkiye Programs & WCBP

- WATAN Conference: Shaping Our Future
- Launching WATAN Capacity Building Program (WCBP), a comprehensive leadership program to develop project leadership expertise in the Syrian 3rd sector.
- In the conference, WATAN launched its 4 strategic priorities for Turkiye, targeting Syrian refugees: their social cohesion and economic empowerment, their youth, and the civil community.
- Continuing to lead advocacy in international and local forums for the Syrian people and the 3rd sector.
- MOU's on economic empowerment were signed.

• 12 million Beneficiaries

2015

Protection, Education, and Integration

- WATAN Conference: Together
- Launching psychological support programs with the University of Manchester, UK.
- Facilitating workshops addressing integration challenges for Syrian and Turkish students in Turkish universities.
- Engaged 50 civil community organizations through WATAN Network members.
- 13 million Beneficiaries

2016

Strategic Relation, and Integrated Projects

- Receiving accreditation as a formal partner for UN Agencies
- The first integrated mobile health unit was established in Northern Syria.
- An infrastructure project was set up for sewage systems across various villages in Aleppo.
- 2,5 million Beneficiaries

2017

Consolidation / Sustainable Intervention

- WATAN Conference: Sustainable Impact
- Consolidating the nine organizations into eight specialized programs within WATAN as a unified entity.
- Launching the Sustainable Intervention Forum at WATAN's annual convention (Conference)
- Continuing to play a pioneering role in civil community development through capacity building for more than 300 NGOs.
- 2 million Beneficiaries

2018

Strategic Donor and Agricultural Value Chain

- WATAN Conference: Aspiring future
- We became a direct partner working with the EU.
- We played a leading role in supporting the agricultural value chain in Syria, particularly for olive oil and wheat.
- The first exhibition of olive products in Syria /Aleppo was held.
- WATAN's Aid Expo is launched in Istanbul.
- 4,3 million Beneficiaries

2019

Innovate for Humanity/ Youth and Education

- WATAN annual convention is held in Gaziantep with an innovate for Humanity theme. We explicitly add innovation to its global messaging and advocate for more innovation in the sector with specific solutions and clear methodologies.
- WATAN runs more than 30 schools.
- 15,5 million Beneficiaries

2020

Innovation in Action/ 2025 Roadmap

- Establishing the innovation lab and implementing a new innovative shelter as part of establishing two camps housing thousands of families.
- The 2025 roadmap was released.
- With COVID-19, We re-adjusted our operating model demonstrating agility and innovation.
- 2 million Beneficiaries



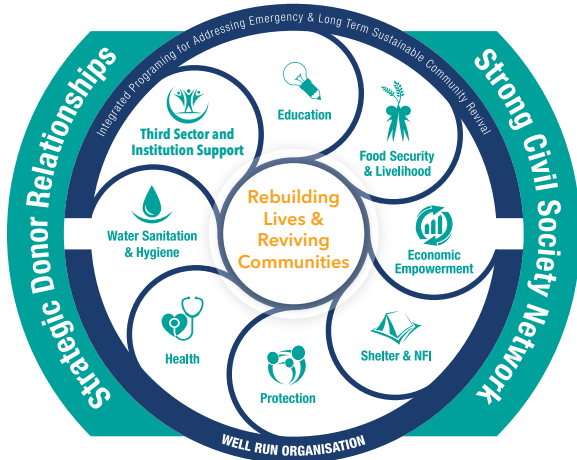
Sustainability Framework

WATAN's sustainable framework is paramount to ensure that humanitarian responses are effective in addressing immediate needs and contribute to long-term capacity building, resilience, social and environmental sustainability, and ethical practices. By adopting a sustainable approach, we make a positive and lasting impact on the lives of affected communities while safeguarding and promoting social justice.



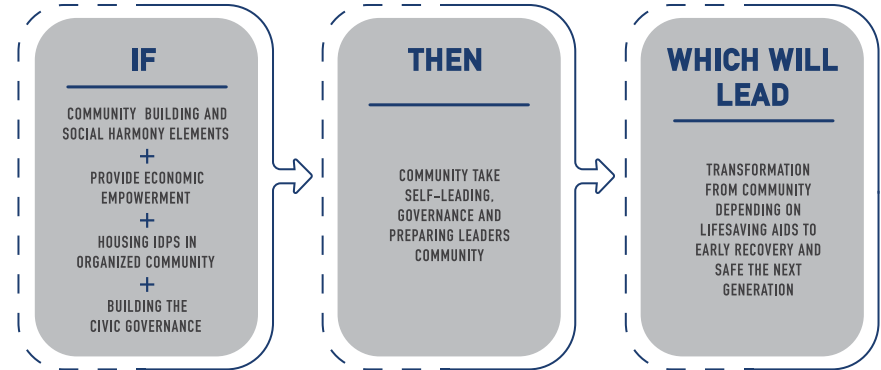
WATAN Framework

WATAN's framework is akin to a powerful engine, fueled by two essential components: a strong civil society network and strategic relationships with donors. These elements provide the energy needed to drive integrated programming that addresses emergencies and revitalizes long-term sustainable communities. Additionally, WATAN's well-organized approach, represented by nine humanitarian sectors, serves as the gears that produce a continuous movement in rebuilding lives and reviving communities, propelling the engine towards its final goal.



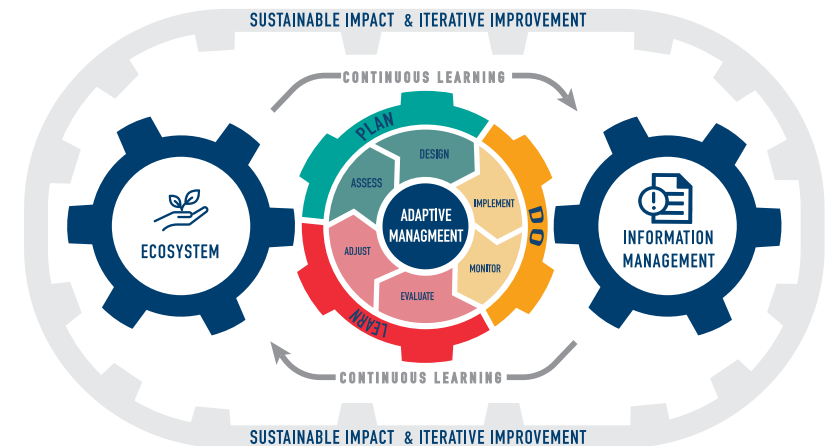
Theory of Change

WATAN's theory of change is vital in humanitarian work as it provides a strategic roadmap for achieving desired outcomes and impacts. It promotes clarity of goals, strategic planning, accountability, coordination, learning, and adaptation, leading to more effective and impactful humanitarian responses.



Knowledge Incremental Methodology

WATAN's Knowledge Incremental Methodology is an approach that prioritizes learning, adaptation, and continuous improvement. It involves an iterative process of gathering, analyzing, and applying knowledge to enhance functional capacity-building, inform evidence-based decision-making, and promote multi-directional knowledge flow. WATAN's approach emphasizes a learning-oriented mindset and the institutionalization of effective knowledge management practices within the organisation.



WATAN's impact

WATAN, with its holistic approach and sustainable framework, has made a significant impact on humanitarian work. Some of the key impacts of WATAN's work include:

Since its founding

Closed projects
256

Financial value
\$160,807,582

Total beneficiaries
19,821,621

WATAN network

WATAN's impact goes far beyond the provision of humanitarian aid. As one of the foundations of the civil movement in Syria since its inception in 2011, WATAN has played a critical role in fostering the growth of civil society institutions in Syria, providing training and resources to local organizations and activists. Through its work, WATAN has helped to build networks of civil society organizations across Syria, promoting collaboration and cooperation in pursuit of common goals.

24 Organizations

Need assessment

WATAN's commitment to evidence-based decision-making, informed by its Knowledge Incremental Methodology, has helped to ensure that interventions are based on sound evidence, best practices, and local context. This has contributed to more effective and efficient humanitarian responses, positively impacting the lives of affected populations.

300 Need assessment

Sustainable Communities

WATAN's integrated programming approach, which focuses on addressing immediate needs while investing in long-term sustainable solutions, has helped revitalize communities and promote resilience. This includes initiatives such as livelihood support, education, health services, and community empowerment programs, which have contributed to the recovery and development of communities over the long term.

450 Communities



Emergency Response

WATAN has been able to provide timely and effective emergency response to communities affected by disasters and crises, including providing life-saving assistance such as food, water, shelter, and medical care to those in need. WATAN's quick and coordinated response has helped save lives and alleviate suffering in emergencies.

10M Beneficiaries
More Than 100 Emergency Responses



Capacity-Building & Economic Empowerment

WATAN's emphasis on functional capacity-building, both within its own organization and among local partners and communities, has helped to build local capacities and empower communities to take ownership of their own development. This has resulted in increased self-reliance and sustainability of interventions, leading to lasting impact beyond the duration of individual projects.

18,5k Beneficiaries



Integration support

WATAN in Turkey supports refugees in areas like education, protection, and community stabilization. They provide tools and resources to help refugees integrate into society, access basic needs, legal protection, and opportunities for self-sufficiency. This promotes positive relationships with the host community, reduces tensions, and supports refugees in rebuilding their lives with dignity and hope.

55k Beneficiaries



Collaboration and Partnerships

WATAN's strategic relationships with donors, civil society organizations, and other stakeholders have helped to foster collaboration, coordination, and innovation in humanitarian work. These partnerships have facilitated resource mobilization, knowledge sharing, and joint efforts to address complex humanitarian challenges, leading to a broader and more sustainable impact.

8 UN agencies
20 INGO
5 Big donors
10 Private sector partners

FSL	WASH	SHELTER	HEALTH
Education	NFI	Third and Institutions	
Capacity Building	Skills Development	Economic Empowerment	

WATAN SECTORS



Third and Institutions Sector

INTRODUCTION

The Third Sector and Institutions are one of the key components of WATAN's work, focusing on building the capacities of civil society organizations in various community work and philanthropy fields. Through certified international programs, WATAN aims to provide high standards of humanitarian services utilizing limited resources, with a particular focus on building decent independent civil societies capable of managing and developing their community affairs.

During a brutal conflict that has displaced millions of Syrians, WATAN's emergency response component provides training and support to partner organizations in disaster preparedness and response. This enables them to provide immediate critical support in the aftermath of a disaster, WATAN's program also focuses on upgrading administrative and technical practices, building staff knowledge and skills, and developing organizational structures, strategies, management, and decision-making processes.

But WATAN's impact goes far beyond the provision of humanitarian aid. As one of the foundations of the civil movement in Syria since its inception in 2011, WATAN has played a critical role in fostering the growth of civil society institutions in Syria, providing training and resources to local organizations and activists. Through its work, WATAN has helped to build networks of civil society organizations across Syria, promoting collaboration and cooperation in pursuit of common goals.

Through this sector, WATAN has been a powerful advocate for peace and non-violent change in Syria. Through its advocacy efforts, WATAN has helped to shape the discourse around the conflict, promoting a vision of a peaceful and inclusive Syria that values the contributions of all its citizens.

WATAN's focus on collaboration, cooperation, and advocacy has been instrumental in promoting a culture of peaceful coexistence and active participation in civil society institutions.

SECTOR MISSION

This Sector was designed to support Civil Society organisations - and the people that work in them and their beneficiaries by providing quality support programs in building capacity, and co-ordinating advocacy campaigns and development projects between different Civil Society organisations.

AREAS OF EXPERTISE

- **Institutional support:** Providing comprehensive services to local Civil Society organisations including sponsorship, consultancy, advocacy and financial support to enable Civil Society to play its natural role in building communities.
- **Building capacity:** Building the capacity of local organisations in different fields and their employees through training and different available tools to promote their development and stability and consequently achieve their individual and collective goals.
- **Co-ordination:** Providing electronic platforms that support the co-ordination between local Civil Society groups to facilitate connections and information exchanges on an operative and managerial level.

SECTOR PHILOSOPHY AND DIFFERENTIATORS

The Sector aims to support civil society organizations and initiatives through institutional support-capacity building and coordination towards building a strong civil society that responds effectively and efficiently to humanitarian and development needs.

SECTOR BENEFICIARIES



SECTOR IMPLEMENTATION



SECTOR FRAMEWORK



COMBAT THE SPREAD OF VIOLENCE

AND CHALLENGE WIDESPREAD PERCEPTIONS

Violence has tragically become an entrenched reality for many Syrians, with devastating effects on individuals and communities alike. Despite this grim reality, the Combating Violence Project offers hope that effective interventions can limit and combat the spread of violence. The project seeks to achieve this goal by empowering trainers in rural Idlib and Aleppo with the necessary skills and knowledge to combat local violence and challenge widespread perceptions around violence in Syria.

The Combating Violence Project is an initiative aimed at addressing the issue of violence within Syria. By providing training to local trainers, brainstorming ideas, and preparing initiatives to combat the spread of violence, the project seeks to make a tangible difference in the lives of Syrians affected by this pressing issue. The project began with providing Training of Trainers (TOT) to 9 selected trainers in Idlib and Aleppo. Subsequently, these trainers delivered comprehensive training to 20 individuals each. Additionally, beneficiaries visited local and private gatherings in the city, collated ideas, and initiatives, and presented them as memorandums and suggested projects to help address the issue of violence in Syria. The project prioritizes rural areas of Idlib and Aleppo, benefiting a total of 1100 individuals.



Protection Sector

INTRODUCTION

The protection sector is a critical component of the humanitarian aid sector, providing vital support to vulnerable populations affected by crises and conflicts. Its primary focus is to identify and address the protection needs of affected individuals, with a particular emphasis on the most vulnerable members of society, such as women, children, people with disabilities, orphans, and older people. The sector's interventions can include monitoring and reporting on human rights situations, providing legal assistance, reducing the risk of gender-based violence, providing counseling to survivors of trauma, and educating communities on their rights and how to access protection services.

WATAN's work in the protection and social harmony sector encompasses a wide range of activities to promote social cohesion and secure decent societies. These include community-based protection, psychosocial support, and community-based reconciliation and dialogue. WATAN's efforts in this field date back to 2012 when it initiated its first Protection Sector project, providing psychotherapy to refugee children in Tripoli, Lebanon, in partnership with the United States Agency for International Development through the Office of Transition Initiatives (OTI). The program continued until 2013, providing critical support to over 3,000 orphans.

WATAN has been at the forefront of promoting social harmony and securing decent societies in this sector, consistently emphasized the need for a peaceful resolution to the conflict in Syria, and has worked tirelessly to promote understanding and dialogue between different communities in the country.

SECTOR MISSION

Enable affected individuals and communities to lead safe, dignified, and fulfilling lives, and to promote respect for their rights and well-being.

by ensuring access to the basics of survival – from food, protection from violence, and fear of being forced to leave their homes or being denied access to relief.

This can be achieved by empowering individuals and communities to access their rights, building resilience, and creating an enabling environment for them.

AREAS OF EXPERTISE

- Awareness-raising: educate and inform individuals and communities about their rights and the services and support that are available to them. This can include information about how to access legal assistance, where to find safe spaces, how to report abuse and exploitation, and how to access counseling and other support services.
- Strengthening protection practices: ensure that the rights and well-being of individuals and communities affected by crisis and conflict are protected to the greatest extent possible.
- Mainstreaming protection: integration of protection considerations into all aspects of humanitarian response, rather than treating protection as a separate or distinct activity.
- a close collaboration between different sectors and actors to ensure that protection is integrated throughout the entire humanitarian response.
- Enhancing community cohesion: WATANs has two community centers within Syria for use in community integration and psychosocial and social support.

SECTOR IMPLEMENTATION

Empower women and girls through workshops and business development that focuses on information exchange, links technical teams, and pilots innovative integration strategies

SECTOR BENEFICIARIES

 **180,481**
beneficiaries

SECTOR PHILOSOPHY AND DIFFERENTIATORS

WATANs protection teams are available to provide psycho-social support in emergency situations.

keep the rights and dignity of affected individuals and communities, with a focus on addressing the root causes of vulnerability and promoting the inclusion of marginalized groups. Differentiators for such a sector may include:

Community-based approaches: Utilizing local knowledge and expertise, and building the capacity of local organizations and individuals to respond to and prevent protection risks.

Gender sensitivity: Specific attention given to the needs and rights of women, girls, boys, men, and other marginalized groups,

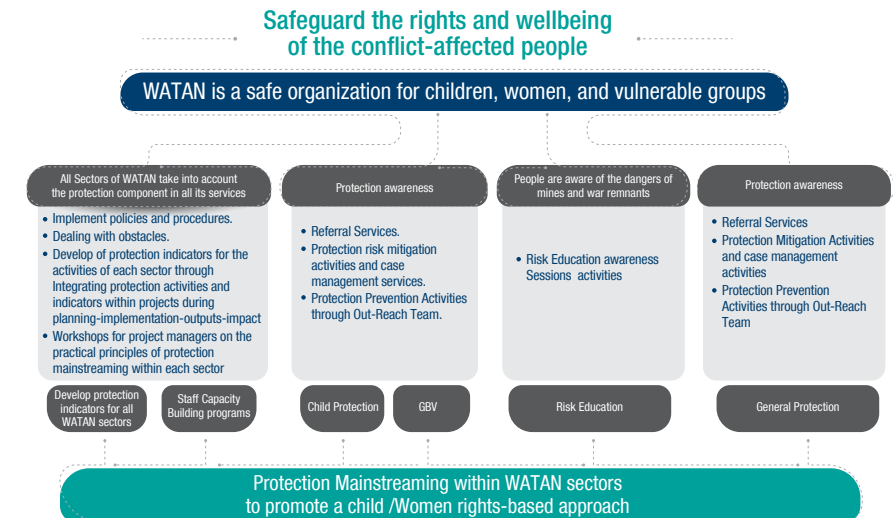
Child protection: Special focus on the rights and needs of children, including providing safe and appropriate spaces for them to play and learn, and protecting them from abuse, exploitation, and violence.

Accountability and transparency: Regular monitoring and evaluation of the sector to ensure that it is meeting its intended goals and that funds are being used responsibly.

Coordination and collaboration: Working closely with other humanitarian actors, including UN agencies, NGOs, and local authorities, to ensure a comprehensive and coordinated response to the protection needs of affected populations.

Durable solutions: A long-term perspective on protection, addressing the root causes of displacement and creating opportunities for sustainable reintegration and self-reliance.

SECTOR FRAMEWORK



WORKING TOGETHER TO PREVENT SEXUAL EXPLOITATION

The safety risks that internally displaced people (IDPs) face are exacerbated during crises, and the frequency of discrimination and exploitation against them increases. Therefore, WATAN has undertaken a project to tackle this: holding sessions for camp residents about protecting against sexual abuse and exploitation, as well as holding relevant training for members of the communities in which WATAN serves, to come up with points of contact that would achieve sustainability for the project's goal. This is in addition to training the cadres of WATAN, and the cadres of the organisations affiliated with WATAN's network, in cooperation with IOM within 15 camps in the areas of Idlib and Harem.

WATAN also contributes to supporting complementary activities to the project, such as the training of cadres for 100 community service centers.

The project aims to introduce the camp residents to the meaning of cases of sexual exploitation and abuse, how to report them, and the danger of remaining silent about such cases, in addition to raising their awareness of the forms of inappropriate behaviour by humanitarian workers.

The urgent need for the project is a result of cases of sexual exploitation of the affected population by some humanitarian workers, due to the lack of awareness, on both sides, of the rules of conduct in humanitarian work, and free humanitarian aid.



Education and Youth Sector

INTRODUCTION

WATAN's Education sector was established in 2012 to meet the urgent need for formal education and psychosocial support among Syrian refugees and IDPs in Turkey and Syria. Initially serving over 800 Syrian children in Syria and 100 Syrian refugee children in Turkey, WATAN later expanded its activities to include Lebanon and Homs, where it provided formal education to 750 Syrian children.

From 2015 to 2022, the education sector expanded horizontally and vertically to meet the needs of Syrian children in various Turkish governorates, Idlib, and Aleppo. WATAN offers various educational services, including formal and informal education, early childhood development programs, summer programs, recreational activities, voluntary campaigns, scholarships, and psychosocial support.

The Education sector's strategic objectives are to improve the quality and equity of education in targeted communities, increase enrolment and decrease dropout rates, ensure a safe and stimulating learning environment, build the technical and professional capacities of school staff, enhance psychological support services to raise pupils' resilience and provide a nurturing environment to foster cognitive, socio-emotional, and linguistic development. Workshops have also been established to promote cohesion between Syrian and Turkish students, encouraging discussion of their common causes and challenges of integrating into the Turkish university environment. Overall, WATAN's Education sector is committed to developing the knowledge, personality, and trust of students, and supporting unique talents and abilities to prepare them for a successful future.

SECTOR MISSION

To provide access to inclusive and quality education for children and youth affected by the crisis in a protective and safe environment with special attention to their well-being. The Sector is based on customized interventions that include the pillars of children/youth development: personality formation, accumulation of knowledge and values, and empowerment at all levels. Psychological, social, cognitive, and professional needs are considered to produce entrepreneurs, scholars, and leaders of the future.

AREAS OF EXPERTISE

WATAN's education sector aims to provide quality and equitable education services to children and youth in crisis-affected areas, including both IDP and host communities. Our multi-component interventions cover various aspects of education, including Early Childhood Development (ECD), Formal Education, Informal Education, Higher Education, and Capacities and Life Skills Building.

Our ECD services provide integrated care and support to children aged 0-8 and their caregivers, with tailored models to address developmental needs and enhance school readiness for children aged 3-5. Our formal education program operates schools that provide primary, intermediate, and secondary education to pupils from different social contexts. We also cover school operational expenses, equipment, educational materials, pupils' kits, and facilities rehabilitation.

Our informal education program offers non-formal education based on children's needs, such as remedial classes, Accelerated Learning Programs (ALP), catch-up classes, literacy and numeracy classes, and Self-Learning Programs (SLP) at schools and other community facilities. We provide curriculum textbooks and related activity materials to support learning.

Our Higher Education program provides Syrian refugee youth and high school graduates with scholarships and language courses to pursue university-level education, increasing their chances of integration into the Syrian and Turkish labor markets.

Finally, our Capacities and Life Skills Building program focuses on building the technical and professional capacities of educational staff and empowering youth through extracurricular activities, including clubs and athletic and social events. These activities support integration efforts between internally displaced persons, refugees, and host communities.

SECTOR PHILOSOPHY AND DIFFERENTIATORS

WATAN's education sector philosophy is rooted in a deep understanding of the essential components of the education process: teachers, pupils, and the educational environment. Our interventions are designed to empower these components with the best possible services to achieve our main goal of promoting community prosperity and rebuilding Syrian society. We accomplish this by creating welcoming learning spaces, preparing professional and trained teachers, and inspiring learning and change in Syrian children.

WATAN differentiates itself through several key factors. Firstly, our emergency response capability allows us to quickly and effectively respond to areas with a high influx of internally displaced persons (IDPs) and provide essential needs to hard-to-reach locations. Secondly, we place a high priority on psychosocial support for students, providing activities and programs for them and their parents in coordination with the protection sector.

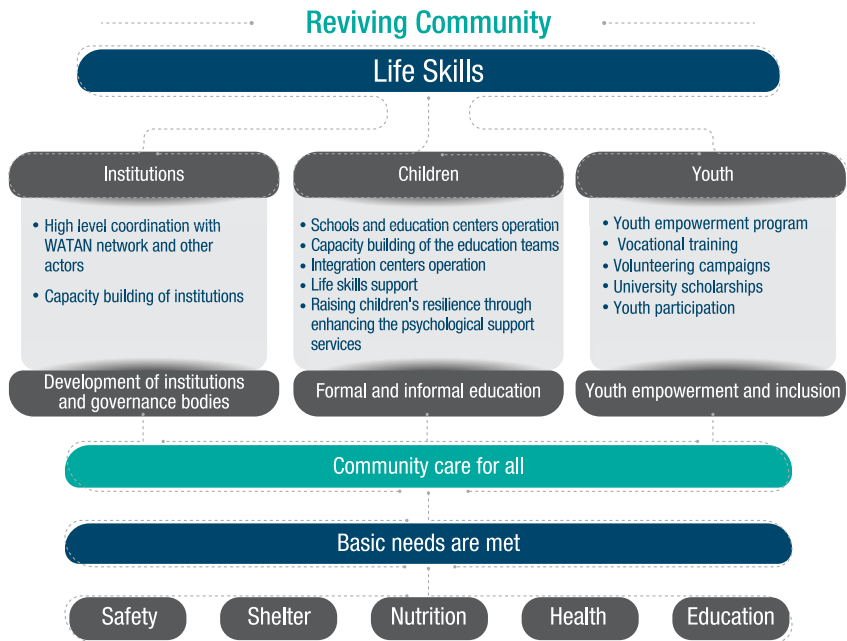
Our well-trained and highly experienced staff provides a high-quality education, while we also work to develop and sponsor talented leaders and innovators. We prioritize school safety, with evacuation plans and drills provided in all our schools. Our aim is to provide high-quality, inclusive education, and we strive to involve students, teachers, and key community members in voluntary activities, encouraging youth to tackle societal challenges such as school dropouts, early marriage, and epidemic diseases.

SECTOR IMPLEMENTATION

WATAN works strategically to achieve its objectives through:

- Developing a strong network of partners
- Understanding Syrian communities and their specific conditions and needs
- Raising children's resilience through enhancing the psychological support services
- Providing capacity building for all education staff to ensure high quality of education
- Enhancing volunteerism and strengthening its role in humanitarian action
- Ensuring proper coordination with other WATAN sectors like Shelter & NFI, WASH, ER, FSL, Health and Protection.

SECTOR FRAMEWORK



SECTOR BENEFICIARIES



ALMA'BATLY CHILDREN BACK TO EDUCATION

The majority of children in northern Syria suffer from poor education due to displacement and high population density. From this reality, WATAN seeks to improve the educational reality and create an opportunity for children to receive an acceptable education by starting the project to build the Ali Abdullah Al-Mudhaf School in the Maabatli area of Afrin, north of Aleppo.

The school was established that will be a model for students inside Syria. The school consists of 16 classrooms, administration rooms and all other basic facilities in accordance with engineering standards and blueprints.

The school will provide educational guarantee to 1,000 students in two shifts aged between 12-18 years and provide all necessary needs during their studies.

One of the main goals of this school is to provide an educational environment based on the principles of Islam and modern sciences knowledge, where students will practice their classroom activities and receive interesting learning in accordance with modern teaching strategies that make the child active and participate in learning, as knowledge contributes to building an integrated personality capable of taking responsibility.





Economic Empowerment Sector

INTRODUCTION

The Economic Empowerment Sector aims to empower individuals and communities to control their lives. This philosophy is reflected in our seeks to provide direct support to people in order to increase their income and improve their living standards. Economic empowerment is a multidimensional social process that helps people to reach their goals by providing training, processes, and opportunities.

By adopting power in societies for the mutual benefit of individuals, economic empowerment can promote social change and create a more just and equitable world. Since 2013, WATAN has implemented a range of economic empowerment projects aimed at achieving these goals.

SECTOR MISSION

To economically empower individuals and groups through capacity-building programs in small business management, vocational training, and ultimately incubations and linking individuals to employment opportunities.

As well as supporting individuals and groups in establishing, accelerating, and growing their own businesses with the potential to enter the formal economy. contributing to the resilience of internally displaced persons (IDPs) and refugees and building coherence between IDPs and host communities.

SECTOR HISTORY

To economically empower individuals and groups through capacity-building programs in small business management, vocational training, and ultimately incubations and linking individuals to employment opportunities.

As well as supporting individuals and groups in establishing, accelerating, and growing their own businesses with the potential to enter the formal economy. contributing to the resilience of internally displaced persons (IDPs) and refugees and building coherence between IDPs and host communities.

AREAS OF EXPERTISE

- **Vocational Training:** Economic stability of individuals and support their resilience.
- **Small business management training:** A comprehensive customized practical course to enable participants to manage their own business and operations.
- **Linking individuals to income opportunities:** Create a platform that connects qualified persons with employment opportunities to fit their skills, also by supplying a start-up kit customized for each profession.

SECTOR IMPLEMENTATION

The economic empowerment sector is:



SECTOR PHILOSOPHY AND DIFFERENTIATORS

The sector aims to further enhance support in contributing towards the resilience of IDPs and refugees and building coherence between host and guest communities.

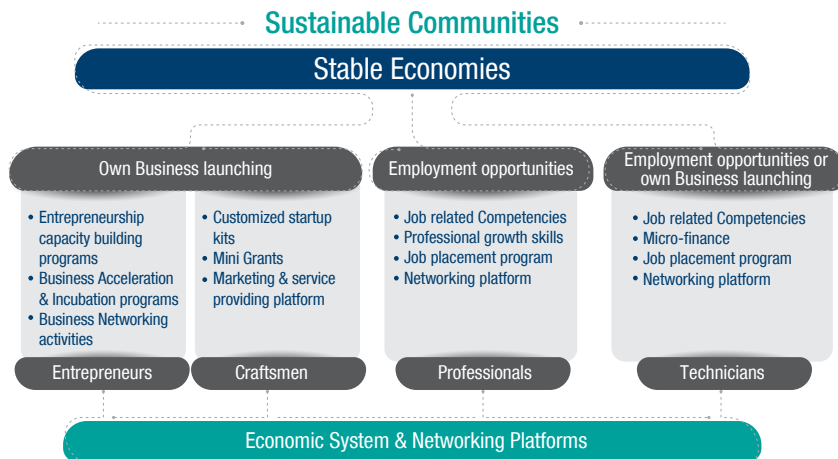
As well as employability opportunities and support the economic stability of individuals by supporting their resilience.

The focus is also placed on enhancing psycho-social health and well-being along with cohesion with the community by moving to productivity and providing a good example of positive coping.

Differentiators:

- Designed to be integrated with the other programs.
- Innovative initiatives and quality impacts
- Has large geographical coverage both inside Syria and in Turkey.
- Knowledge of context and culture of Syrian and regional needs
- Partners relations and wide networking.

SECTOR FRAMEWORK



SECTOR BENEFICIARIES



WORKSHOPS FOR COVID-19 MASKS AT THE HANDS OF WIDOWS

WATAN manufactured medical masks through the establishment of four sewing workshops to manufacture (112,000) masks in the city of "Maarrat Misrin". Each workshop includes (10) seamstresses from widows, with (40) seamstresses, in exchange for a monthly income. To be able to secure a decent life for herself and her children.

It is noteworthy that (50,000) masks were manufactured until the end of October, (25,000) of which were distributed to (1,562) families.

For the same purpose, a center for medical consultations to combat the Covid-19 epidemic was established. This center includes: six specialized doctors to respond to the calls and inquiries of the Covid-19 isolation centers, 24 hours a day, due to the absence of specialized doctors in most isolation centers, which allows this service: providing consultations for all centers and saving the largest possible number of patients, and these doctors were able until late October. The first is to provide: (174) consultations in the remote counseling center for isolation centers in northern Syria.





Food Security & Livelihoods Sector

INTRODUCTION

WATAN's Food Security and Livelihoods (FSL) sector is dedicated to meeting the immediate and lifesaving needs of conflict-affected populations while also building their resilience as they recover from disasters. FSL aims to address the root causes of food insecurity and bring about sustainable poverty reduction and nutrition outcomes by improving community capacities and skills. The sector's history dates back to 2012, with the distribution of food baskets in Homs, Hama, Aleppo, Damascus rural, and Deir Ezzor.

Over time, the sector expanded its focus to include strategic crop cultivation, agricultural tools, and services to support livestock. WATAN's FSL sector equips farmers and vulnerable individuals with the skills, technologies, and start-up capital necessary for them to sustainably grow food and/or start income-generating activities. The program focuses on impactful interventions such as micro-grants and value chain projects in both agricultural and livestock sectors to achieve sustainable long-term outcomes.

SECTOR MISSION

Increase the number of Syrian families who are well-nourished, help them to be productive and efficient families, in addition to ensuring a decent life for them.

Ensure food security and sustainable development by improving the lives of the most vulnerable through promoting the sustainable use of available resources, including equitable sharing, and sharing of benefits arising from implemented projects.

Focusing on people who aren't able to produce enough food and income or do not have the means to obtain the minimum family requirements for an active and healthy life.

AREAS OF EXPERTISE

WATAN analyzes the context and circumstances of livelihood vulnerability in both urgent situations and chronic crises. This analysis helps WATAN better comprehend vulnerability, wants, and preferences and is essential to the creation of comprehensive, integrated solutions that support long-lasting solutions.

WATAN's Food Security and Livelihoods (FSL) Sector is frequently delivered in conjunction with other sectors and varies substantially depending on the situation. They concentrate on three key areas:

During and soon after an emergency, ensuring access to food and the safeguarding of livelihoods, mostly through ready-to-eat rations, free bread, food baskets, cash support, and in-kind transfers.

Support affected households and communities in protecting household and livelihood systems, averting erosion of productive assets, and support households and communities in restoring productive assets. Securing livelihoods during the recovery phase by restoring and bolstering community and household resources, capacities, and methods through several unique Agriculture, Livestock, and Irrigation projects

Increasing self-employment, paid work, and entrepreneurship in rural and urban areas to advance improved food security, and the improvement of household resilience, such as (Small business grants, supporting food processing, creating job opportunities related to agriculture, livestock, and irrigation activities, and Cash for work) projects.

SECTOR PHILOSOPHY AND DIFFERENTIATORS

WATAN's food security and livelihood sector philosophy are grounded on addressing the multi-faceted challenges that communities face in the target areas, which meets HH's immediate needs as a platform to subsequently nurture sustainable livelihoods, whilst concurrently strengthening communities' resilience to multiple hazards.

Understanding conflict dynamics and adopting Do No Harm principles. These approaches integrate gender and empowerment of women, men, girls, boys, the disabled, and the elderly to ensure equal access to opportunities and minimize harm via protection mainstreaming.

Achieve Food security for all people, at all times by access to sufficient, safe, and nutritious food which meets their dietary needs and food preferences for an active and healthy life.

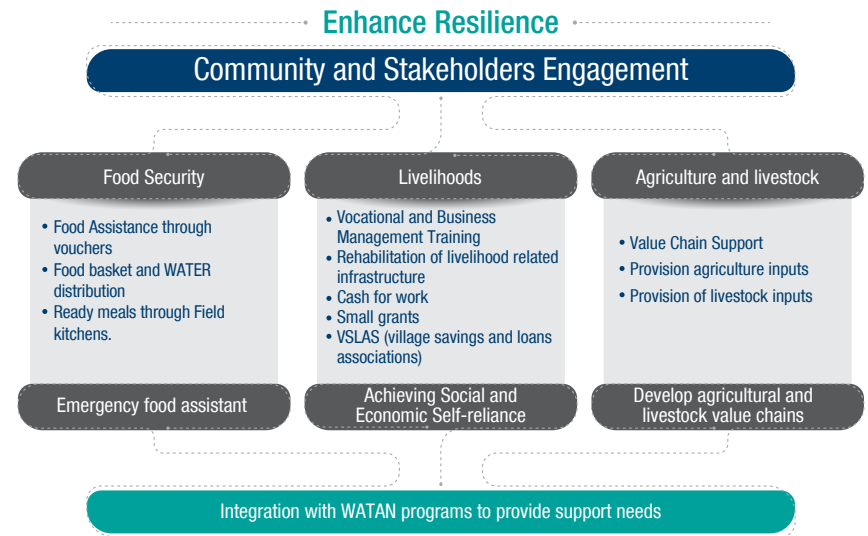
Support all aspects of the targeted family's well-being by addressing the underlying drivers of the family's poverty, food/nutrition insecurity, and vulnerability to climate and disaster risk.

Provides leadership to design and scale up interventions focus on empowering households and communities to graduate the poorest households out of extreme poverty by developing productive and resilient livelihoods enabling them to feed their families, and care for and educate their children.

Develop FSL sector achievements to activities that involve increasing skill levels and empowering communities to acquire diverse skills for more sustainability.

Promote livelihood strategies that protect, recover, and strengthen individuals' and households' abilities to earn a living. To prevent repeated displacement.

SECTOR FRAMEWORK



SECTOR BENEFICIARIES



SECTOR IMPLEMENTATION



FROM THE SEED TO THE LOAF: A PROJECT THAT TRANSFORMS A PERSON TO EAT WHAT HE SOWS

In a country that has been suffering from a crisis that has been going on for ten years. Especially in the production of wheat and the provision of bread, which is the main food for people, and contributes to enhancing food security.

WATAN, in cooperation with (SCHF) and (OCHA), designed an intervention project aimed at promoting this sector and supporting farmers by adopting and implementing a series of activities and interventions based on value-added support.

The project targeted areas in 15 villages in the Mahbil district and the Jericho region (An area of Syria, administratively belongs to Idlib province). WATAN identified obstacles faced by wheat farmers; the gaps that must be filled along the chain of wheat production; and ways to strengthen it as one of the most important components of food security in the liberated areas.



Health Sector

INTRODUCTION

WATAN's health sector has been operational since 2012, working towards improving the health systems in Northern West Syria (NWS). The foundation aims to create sustainable solutions that cater to the specific needs of the local communities by building a response based on the unique characteristics and resources of the area. The sector includes primary healthcare, emergency response for COVID-19, blood bank and thalassemia clinics services, orthopedic surgery, and telehealth, all provided by healthcare professionals and community outreach workers.

With a focus on the most vulnerable and hard-to-reach areas, WATAN operates three primary health care centers, Al-Amal Hospital for Orthopedic Surgery, and three blood banks, offering essential services such as medical consultations, health promotion, distribution of medicines and consumables, and specialized surgeries. In response to the Covid-19 pandemic, the foundation also established CCTCs, distributed oxygen generators to health facilities, and provided telemedicine consultation services. Moreover, WATAN Foundation is researching the transition to local health financing in NWS to ensure the long-term sustainability of healthcare services in the region and empower local communities to take ownership of their health systems.

SECTOR MISSION

Our mission is to establish a strong and reliable healthcare system in Syria by providing/purchasing a comprehensive package of essential health services and focusing on the needs of the most vulnerable individuals. We aim to improve the sustainability of essential healthcare services by establishing local health financing mechanisms to enhance the effectiveness of life-saving health response efforts.

AREAS OF EXPERTISE

- **Primary healthcare:** providing essential services to improve the health and well-being of the Syrian population, particularly vulnerable and marginalized communities. Services include non-communicable disease management, infection prevention and control, sexual and reproductive health, and mental health support through a gap action program.
- **Secondary healthcare:** supporting Al-Amal Hospital, one of two specialized orthopedic surgical hospitals in North-West Syria, by providing orthopedic surgical interventions such as fracture fixation, joint replacement, and limb-saving surgeries after traumatic accidents. The aim is to reduce morbidity and mortality rates of trauma patients, improve patients' livelihoods and earning potential, and decrease physical disability.
- **Blood banks and Thalassemia clinics:** operating well-organized blood banks with efficient transfusion services and providing comprehensive care and support to Thalassemia patients and their families. All donated blood is screened for transfusion-transmissible infections such as HIV, hepatitis B, hepatitis C, and syphilis.
- **Emergency response:** responding to crises such as the COVID-19 pandemic and the Cholera epidemic by establishing a COVID-19 Community Treatment Centre, managing three isolation centers for COVID-19 patients, providing Mobile Oxygen generators to serve a network of 17 hospitals in northern and western Aleppo, and managing three oral rehydration points for the treatment of mild Cholera patients.
- WATAN is committed to improving the health and well-being of the communities it serves in North-West Syria by providing timely and efficient services to those in need.

SECTOR PHILOSOPHY AND DIFFERENTIATORS

Health sector programs and services are designed to address the health needs of individuals affected by disasters or conflicts in besieged or hard-to-reach areas by focusing on:

Community involvement: The sector should involve the local community in the planning, implementation, and management of the health financing scheme. This can help ensure that the sector is responsive to the needs of the community and that there is buy-in from local stakeholders.

Sustainability: The sector should be designed to be financially sustainable in the long term so that it can continue to support the health needs of the community even after external funding dries up.

Flexibility: The sector should be flexible enough to accommodate different types of health financing mechanisms, such as pre-paid health schemes, community-based health insurance, or health savings accounts..

Transparency and accountability: The sector should have clear financial and governance structures in place, and there should be transparency and accountability for the use of funds.

Health outcomes: The sector should be designed to improve health outcomes for the community, and there should be mechanisms in place to monitor and evaluate the program's impact.the sector's impact.

SECTOR IMPLEMENTATION

WATAN is implementing in most besieged or "hard-to-reach" areas where the need for health care and emergency medical assistance is the greatest.

The emergency response plan supports medical supplies, emergency medical equipment, and rehabilitation of facilities.

WATAN's health diagnostics division, laboratories and radiology services raise the quality of health services provided.

WATAN continues to expand its reach to more areas and increase the numbers of people benefitting from its services. WATAN, in support of the basic right to health care, established one diagnostic centres in 2017, offering more specialised training to staff within Syria.

SECTOR FRAMEWORK

Reduce mortality and morbidity rates

Community Engagement & Coordination with stakeholders

Capacity Building

- Build the capacity of health and nutrition staff and community workers.
- Identify needs and gaps in terms of capacity building and raise them to stakeholders.

Deliver Health Services

- Primary health services
- Secondary health services
- Tertiary health services
- Specialized health services

Community services

- Outreach activities
- Referral services
- Integration

Need assessment - Standards of operation - Quality Assurance
Pharmaceuticals management - Integration

SECTOR BENEFICIARIES



1,611,862
beneficiaries

Mobile medical services cover **HARD-TO-REACH** areas and random camps

WATAN's mobile clinic is part of a project implemented by WATAN in partnership with NORWAC, which provides medical consultations and free treatment in areas far from the city center.

The mobile medical team consists of a doctor, a nurse and a reception worker that make daily visits to the site to provide medical services. WATAN, through this mobile team, seeks to provide health services to the beneficiaries, in difficult-to-reach camps.





Water, Sanitation and Hygiene Sector

INTRODUCTION

WATAN's WASH sector is dedicated to ensuring access to free drinkable water and other essential needs, focusing on promoting public hygiene, reducing the transmission of water-borne diseases, and mitigating the spread of COVID-19 through innovative and sustainable methods. Since its inception in November 2013, the sector has provided humanitarian assistance to IDPs and displaced families, including rehabilitating the stations in Aleppo and Idlib.

The WASH sector implements sustainable infrastructure projects on a large scale and advocates for emergency preparedness among cluster members to meet the emergent needs of affected populations. Renewable energy solutions, such as the integration of hybrid and solar PV systems, are adopted to increase cost efficiency. WATAN works with a strong relief network to quickly respond to a large number of beneficiaries, including those in hard-to-reach areas where no other organizations work.

The sector also adopts innovative solutions, such as desludging and solid waste management projects, hygiene distribution campaigns, and linking water stations with renewable energy sources, to reduce the life burdens of beneficiaries.

SECTOR MISSION

Provide lifesaving WASH emergency assistance through sustainable camps water and sanitation infrastructure improvements and enhance the community's hygienic capacity to support IDP sites. Moreover, the WASH Sector works in camps, and communities in cooperation with local authorities, and camp management. This cooperation gives the organization a deep understanding of needs, high accountability, and quality.

AREAS OF EXPERTISE

- Expertise in WASH-related areas such as hygiene kit distribution and renewable energy-based water station rehabilitation.
- Awareness sessions and hygiene club activities increase understanding of personal hygiene, COVID-19, and menstrual hygiene management.
- Promote sustainable access to water and sanitation facilities through intelligent interventions and improved resource management.
- General hygiene and clean environments are promoted through solid waste management cooperation with local authorities and the distribution of hygiene kits.
- Personal hygiene is a priority, and innovative awareness sessions have addressed the COVID-19 epidemic and highlighted healthy lifestyles.

SECTOR PHILOSOPHY AND DIFFERENTIATORS

WATAN's WASH sector responds rapidly to emergencies with a three-step approach, prioritizing capacity building and sustainable infrastructure interventions. The organization cooperates with local authorities to promote general hygiene and personal hygiene as a priority, addressing recent cholera and COVID-19 epidemics through innovative awareness sessions. WATAN's differentiators include contextual understanding, extensive access, technical expertise, and locally sourced solutions.

WASH Sector Differentiators:

1. Deep understanding of the context,
2. Huge access in the affected area,
3. Technical expertise,
4. Bringing innovative locally sourced solutions,
5. Integrated and coordinated response.

SECTOR IMPLEMENTATION

The WASH sector has built a rapid response network and when emergencies or sudden displacements occur, WATAN staff are able, within 48-72 hours, to:



SECTOR FRAMEWORK

To Alleviate the suffering of vulnerable people and reduce the rate of water-borne diseases

Effective community-led approach considering gender equity and inclusion

- Water Trucking
- Installation of water tanks
- Distribution of jerry cans
- Distribution of water purification tablets
- Rehabilitation of water stations.
- Rehabilitation of water networks
- Rehabilitation of water facilities in schools and health centers.
- Establishing of cost recovery systems
- Building the water management units capacity
- Water quality monitoring

Equitable Access to clean water

- Rehabilitation of sewage system
- Rehabilitation of sanitation facilities in schools and health centers
- Latrine construction in camp, schools and open areas
- Desludging

Access to improved sanitation for all

- Solid Waste management in camps, schools and communities.
- Hygiene kits distribution.
- Hygiene awareness raising in schools, camps and communities.

Accomplishing sustainable behavior change in hygiene

SECTOR BENEFICIARIES

 **13,395,638**
beneficiaries

Enhancing sustainable and innovative solutions, in camps **100m³ High water tank** was constructed with clean energy

In aim to secure the sustainable WASH infrastructure and services for IDPs in camps in Idlib governorate, which included undertaking the rehabilitation of the water networks in-camp, Badelha camp has been equipped with a solar system which is clean, renewable energy. This provides a solution to reduce operating and maintenance costs. In addition, a high tank was built to ensure water reaches the largest possible number of beneficiaries in rising (20) m, wide arrives to (100) cubic meter, to provide drinking water for 1260 IDPs.





Shelter Sector

INTRODUCTION

WATAN's shelter sector has a comprehensive approach to providing shelter solutions for displaced communities in Syria and Turkey. The sector's history dates back to the end of 2012 when the organization distributed 3,000 blankets and 10,000 sleeping bags to the displaced. Since 2015, the organization has been working on providing shelter solutions in both in-camp and off-camp settings. Initially, the focus was on distributing shelter kits and enhancing life in camps by conducting construction activities and establishing concrete fences. However, Watan has now expanded its activities to include installing new tents and providing gravel foundations and participating in expert technical teams with engineers in Syria and Turkey.

In partnership with the Global Shelter Cluster and IKEA's Better Shelter organization, Watan has established new camps with innovative shelter solutions, funded by UNHCR and UNOCHA, to provide displaced families with safe, secure, and stable living environments. The Watan Foundation's shelter sector is critical for meeting the basic needs of displaced communities and supporting their well-being and dignity during times of crisis.

SECTOR MISSION

- Support the transitional shelter: provision of shelter needs to stabilize IDPs in the collective centers and camps.
- Provision of support for shelter durable interventions: by supporting the returnees to their place of origin when the conditions are suitable by rehabilitating the damaged houses and buildings.
- Appropriate preparedness for an emergency: Create plans and discover the best solutions to respond to the emergency by ensuring the prepositioning items, and procedures for fast and adequate intervention.

AREAS OF EXPERTISE

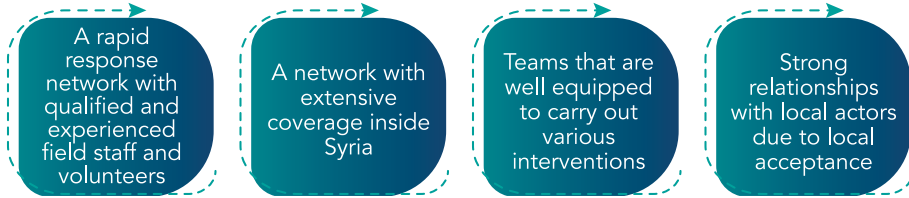
- House's rehabilitation.
- CCs Rehabilitation.
- Shelter Items distribution.
- Tent distribution and installing.
- Better Shelter (RHUs) installation.
- Dignified Shelter installation,
- Infrastructure activities (Latrines, Sewages, drainages, water supply, road gravelling....).

SECTOR PHILOSOPHY AND DIFFERENTIATORS

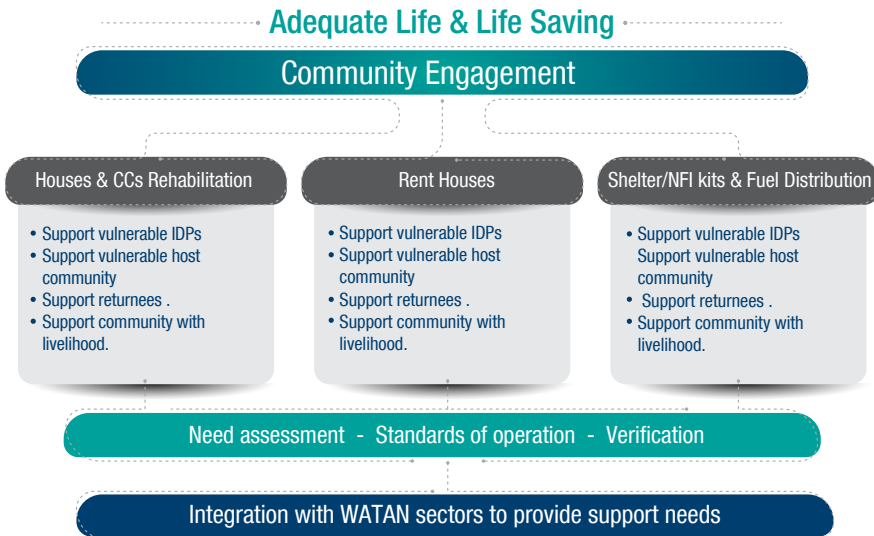
At the heart of WATAN's shelter sector philosophy is a rapid response network made up of 100 volunteers situated in various regions within Syria. These volunteers provide weekly reports on changes in the humanitarian situation, including any increases in the number of internally displaced persons (IDPs).

This information is then relayed to the sector team, who determines the best course of action required to address any emergency situations. Examples of such actions include the distribution of non-food baskets, including shelter baskets, which consist of essential items such as kitchen sets, mattresses, solar lamps, and kerosene heaters. Coordination with other sectors, such as the WASH sector, is also crucial to ensure any related issues, such as open sewerage systems, are referred to the relevant parties. To avoid any duplication of efforts, effective communication with the cluster is maintained. In addition to providing immediate relief, the shelter and non-food sectors strive to build capacity within the rapid response network to expand coverage areas and reach more beneficiaries, with the goal of achieving sustainable results.

SECTOR IMPLEMENTATION



SECTOR FRAMEWORK



SECTOR BENEFICIARIES

 **1,185,192**
beneficiaries

NEW HOUSING UNITS PROVIDE QUALITY SERVICES TO INCREASE SAFETY

The northern Syrian camps are facing difficult conditions, with the succession of summer and winter seasons every year.

WATAN intervened and distributed basic shelter materials in addition to installing and cleaning tents for families who are suffering the harsh conditions of displacement.

Furthermore, our team improved the tent sites by clearing 15 km of roads with connection to sewage networks to reduce the risks of pollution and the causes of epidemics among children. Also, 150 lighting poles were put up to light the roads at night.





Non-Food Items Sector

INTRODUCTION

The non-food items (NFI) sector aims to provide essential household items such as mattresses, blankets, and heating fuel to vulnerable populations affected by conflict. This sector targets both internally displaced persons (IDPs) and vulnerable host communities, with special attention paid to those living in collective centers, tented informal settlements, and unfinished buildings. The sector's history dates back to the end of 2012 when WATAN launched the first NFI project, distributing 3,000 blankets and 10,000 sleeping bags to the displaced. Winter assistance, including fuel and stoves, was provided for 2,000 households in several camps in Idlib governorate, while winter NFI materials were distributed to 25,000 households, and distributed 4,000 blankets in 20 districts in Tripoli, Lebanon, to help refugees in dire need of basic winter requirements.

Since then, WATAN has continued to provide regular and emergency NFI support, winterization activities in the form of in-kind and cash assistance such as clothes and fuel, and tent installation and replacements.

SECTOR MISSION

- Distribution Of NFIs to people in emergency and crisis: distribution of NFIs to people in need of rapid response by considering the accuracy of need assessment and the quality of the response through an effective rapid response network with deep coordination with all stakeholders.
- Provision of winter materials, such as high thermal blankets, foam mattresses, heating fuel, and stoves.
- Provides emergency assistance to newly displaced people affected by conflict: A minimum NFI kit and “Newly arrival kits” emergency shelter items (if necessary) for those in need through WATAN’s rapid response mechanism and ensure that adequate mechanisms are put in place for the timely delivery of emergency assistance.

AREAS OF EXPERTISE

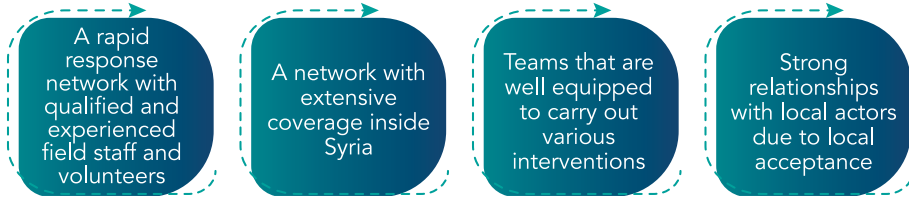
- Non-Food Item (NFI) distribution to support the dignity, health, privacy, and agency of affected populations during emergencies
- Tent installation, distribution, and repair to provide shelter and protect people from external conditions such as rain, snow, and wind
- Seasonal winter NFI and cash assistance to vulnerable households, especially for displaced people and camp inhabitants, to meet their basic needs and protect them from harsh weather conditions.

SECTOR PHILOSOPHY AND DIFFERENTIATORS

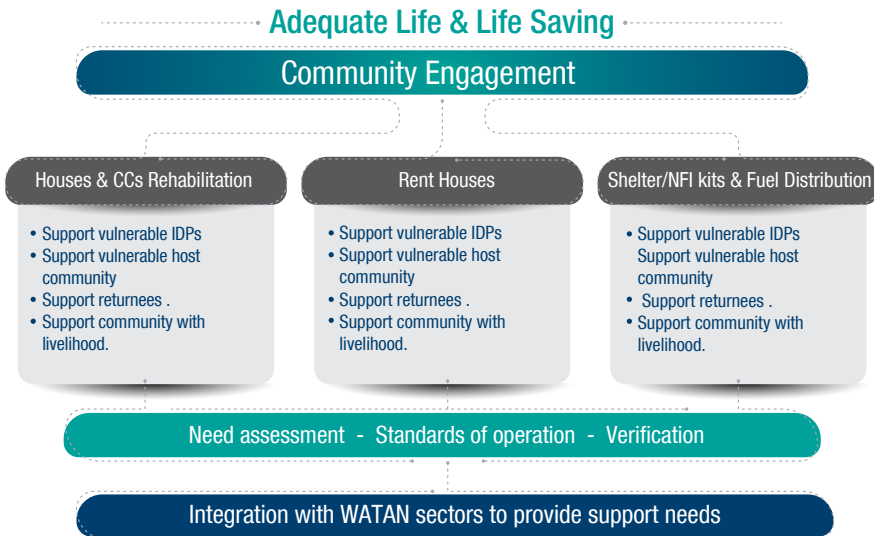
Capacity-building is a key priority for the non-food sector, and efforts are underway to further develop the rapid response network. The goal is to expand the coverage area, enabling WATAN to reach more accessible areas and increase the number of beneficiaries. This approach aligns with WATAN’s commitment to achieving sustainable results and ensuring that vulnerable populations have access to the support they need to rebuild their lives

WATAN’s Non-Food Sector operates a rapid response network consisting of 100 volunteers stationed across various regions within Syria. These volunteers regularly provide weekly reports on changes in the humanitarian situation in their respective regions, including any new developments in the number of Internally Displaced Persons (IDPs).

SECTOR IMPLEMENTATION



SECTOR FRAMEWORK



SECTOR BENEFICIARIES



WATAN RESPONSE to the Devastating Earthquake

in Turkey and Northwestern Syria

In the aftermath of the devastating earthquake that struck southern Turkey and extended to Syria, tens of thousands of residents have been left without homes, shelter, or basic necessities. This catastrophic event has renewed fear and horror in the hearts of families, as they worry about the potential loss of their loved ones. However, WATAN has quickly and effectively responded to this crisis. Since the outset of the disaster, WATAN has been actively engaged in mobilizing relief efforts to provide the necessary basic necessities to those affected, distributing 9588 NFI kits to communities in Turkey and northwestern Syria.



WATAN CONVENTIONS

WATAN conference is the leading event for Syrian civil society, it is attended by representatives of the host country's Governments, the United Nations, donor Governments, and leading national and international humanitarian organizations, as well as by representatives of local Syrian organizations, which constitute WATAN's network, and audience of political leaders and diplomats, academics, researchers and students interested in civil society activities

WATAN Founding Conference
Istanbul 10 - 12 Sept - 2012

WATAN Fourth Conference
Istanbul 10 - 12 December - 2015

WATAN Second Conference
Istanbul 15 - 17 August - 2013

WATAN Fifth Conference
Istanbul 19 - 21 January - 2017

WATAN Third Conference
Istanbul 21 - 23 August - 2014

WATAN Sixth Conference
Istanbul 14 - 17 February - 2018

WATAN Seventh Conference
Gaziantep 24 - 27 July - 2019



Path to Progress

With 15 years of experience in relief and development projects, WATAN is integrating the theory of change and innovative approaches in its future strategy, and creating an integrated model between education and economic empowerment for comprehensive societal change to create an effective and sustainable impact.

With a vision of a free and dignified world based on tolerance, respect, and social justice, WATAN aims to make a meaningful difference in the lives of those in need. Collaborating with donors and global humanitarian organizations, WATAN seeks to contribute towards positive change and create a brighter future for vulnerable communities.

As we celebrate our achievements at WATAN, we are deeply grateful to our partners for their unwavering support. Together, we have positively impacted the communities we serve. We remain committed to maintaining and strengthening our partnerships as we work towards a better future for those in need. Thank you once again for your continuous support and collaboration.



ACCOUNTING PRINCIPLES

- Basis of Preparation

The financial statements have been prepared on an accrual basis of accounting with respect to income and on an accruals basis with respect to expenditure, in accordance with the accounting policies as set out below. These accounting policies are in accordance with the

policies and guidelines of WATAN. However, in relation to the accounting treatment of the inventories, WATAN's Policy is to expense these immediately to the statement of financial activities at acquisition. This is deemed to be a more appropriate accounting treatment than the treatment normally afforded to such transactions in generally accepted accounting principles (GAAP), which would require these transactions to be recorded as assets subject to annual accounting charges as these assets are utilized or consumed. These policies are in line with the normal accounting policies applied by International Non-Government Organizations (NGOs), which are observed due to their working environment.

- Fund Accounting Policy

Restricted funds are those donated for use in a particular area or for specific purposes, the use of which is restricted to that area or purpose. Restricted revenue is generated from the projects whose terms are specified with the Donor before the implementation starts. These types of contracts mainly include type and scope of work, implementation duration, expense type and contract value. Restricted revenue is generated as the same amount as the expenses charged on the Project. Unrestricted income funds are general funds that are available for use at the trustees' discretion in furtherance of the objectives of the charity.

- Incoming Resources

The principal accounting policies adopted is revenue recognition revenue is recognized under the percentage of completion method which allocates the expenses to the donors based on approved financial reports. Voluntary income including donations and grants that provide core funding or are of a general nature is recognized where there is an entitlement, certainty of receipt and the amount can be measured with sufficient reliability. Income from charitable activities includes income recognized as earned (as the related goods or services are provided) under contract.

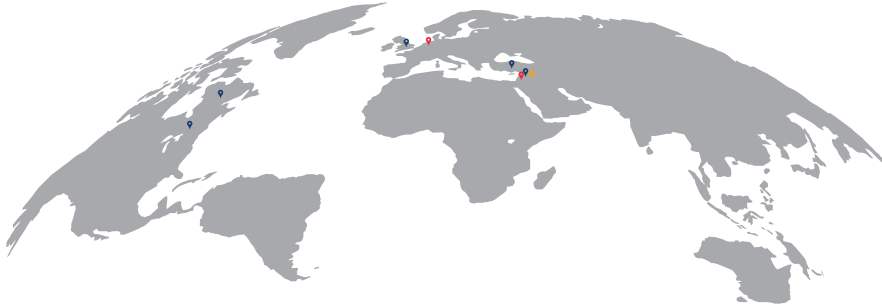
- Resources Expended

Liabilities are recognized as soon as there is a legal or constructive obligation committing the charity to the expenditure. All expenditure is accounted for on an accruals basis and has been classified under headings that aggregate all costs related to the category. Costs of generating funds are the costs associated with attracting voluntary income. Charitable expenditure comprises those costs incurred by the charity in the delivery of its activities and services for its beneficiaries. It includes both costs that can be allocated directly to such activities and those costs of an indirect nature necessary to support them.

- Admin Support Costs

Support costs include central functions and have been allocated to activity cost categories on a basis consistent with the use of resources, for example, allocating property costs by floor areas, or per capita, staff costs by the time spent and other costs by their usage.

WATAN's offices around the world



Jordan - Germany

Syria - Turkey - United Kingdom - United States - Canada

Iraq

Offices under construction

Active offices

Licensed Offices
Without external activity

WATAN activities distribution

WATAN is currently working in Syria and Turkey to address emergency response and sustainable community revival. WATAN is having a real and positive impact on millions of people.

WATAN is registered as a non-profit organization in the United Kingdom United States and Turkey. *

* Registration in UK:

- WATAN Foundation, Registration No: 1148324

*Registration in US:

- WATAN Inc. Registration No: 3341941

* Registration in Turkey:

- VATAN Derneği, Registration No: 27 017 088
- VATAN Sivil Toplum Hizmetleri, Registration No: 27 017 095

Contact Us

✉ info@WATAN.foundation
pr@WATAN.foundation

🌐 WATAN.foundation





WATANFoundation
www.WATAN.foundation