

ANNUAL REPORT 2022



f X y i
WATANFoundation
www.WATAN.foundation



Contents

A word from the WATAN President	6
About WATAN	8
WATAN history	10
Board of Directors of WATAN	12
Role in Syria	14
Situation in Syria	16
WATAN's Programmes	18
Challenges and Success	42
The Financial Report	44
Special Thanks	51



Word from the **WATAN President**

In the tapestry of humanitarian endeavor, creativity is the thread that weaves innovation into the fabric of change. Embracing the theory that every act of innovation is a step toward transformative impact, we at WATAN embark on a journey where creativity births solutions, innovation charts new paths, and our theory of change becomes a beacon of hope, lighting the way to a future where resilience triumphs over adversity.

As we reflect on the journey of WATAN throughout 2022, I am honored to share the remarkable strides we've made in the face of the complex humanitarian challenges in north and northwest Syria. The year brought unprecedented obstacles, including enduring conflict, economic turbulence, and the far-reaching impacts of the ongoing COVID-19 pandemic. Yet, with each challenge, our determination to bring transformative change has only strengthened.

In response to these adversities, WATAN embarked on an extensive humanitarian mission, extending our reach to vulnerable communities across the diverse regions of north and northwest Syria. The challenges were daunting, but they fueled our commitment to delivering impactful assistance in the sectors of Water, Sanitisation, and Hygiene (WASH);

Health; Shelter and Non-Food Items (SNFI); Food Security and Agriculture (FSA); Education; and Protection.

Our successes in 2022 tell a story of resilience, innovation, and a deep-seated commitment to the well-being of those in need. From providing essential healthcare services to over 86,000 individuals in critical locations to improving access to safe water and hygiene for more than 60,000 beneficiaries in Idlib and Aleppo, our tangible impact speaks to the dedication of our remarkable teams, partners, and supporters.

As we look toward the future, the path ahead is laden with challenges—funding gaps, ongoing conflict, and persistent access constraints. However, within these challenges lies an opportunity to innovate and pioneer transformative projects that can reshape the trajectory of humanitarian efforts in the region.

WATAN envisions a future where innovative projects lead the way in addressing the evolving needs of our communities. We are committed to intensifying our efforts in securing additional support, enhancing coordination among humanitarian actors, and leveraging innovative solutions to maximize our impact. Our goal is not only to meet immediate needs but to empower communities to thrive amidst adversity.

Looking ahead, we are excited to launch pioneering initiatives in sustainable water and sanitation solutions, resilient health infrastructure, and groundbreaking projects in education and child protection. These ventures will not only address the urgent needs of today but lay the foundation for a more resilient and sustainable future.

We extend our deepest gratitude to our supporters, partners, and the resilient communities we serve. Your unwavering support fuels our determination to forge ahead into a future where innovative projects pave the way for lasting change. Join us on this journey as we continue to make a tangible impact on the lives of those affected by the protracted conflict in Syria.

Sincerely,

Moaz Al-Sibai

Who We Are

WATAN is a leading Civil Society Organization delivering emergency relief, third-sector support, and long-term international development projects.

WATAN is committed to helping people and reviving communities. WATAN is an independent, non-governmental, apolitical, and non-sectarian organization.

We operate several integrated programs with the aim of addressing humanitarian emergency response and sustainable community revival through a holistic and transformative approach.

We believe in the role of Civil Society in the various phases of intervention. Thus, we invest in supporting and developing Civil Society in our areas of reach. We also create platforms for coordination and integration to maximize impact on communities served.

To achieve our goal, we seek to be the preferred partner for international agencies in areas of specialization and reach.

WATAN was established in 2012 as a framework merging a number of organizations and groups that had extensive community development work going back to 2006.

Mission

Our mission is to develop a sustainable, healthy, and educated community, based on an inclusive society that positively engages, supports, and improves the lives of each individual, regardless of gender, faith, or ethnicity. We deliver programs that rebuild lives and maintain community social cohesion by providing transformative programs in reliefs, post-conflict-peace-building, education, economic empowerment, advocacy, and development of a strong Civil Society.

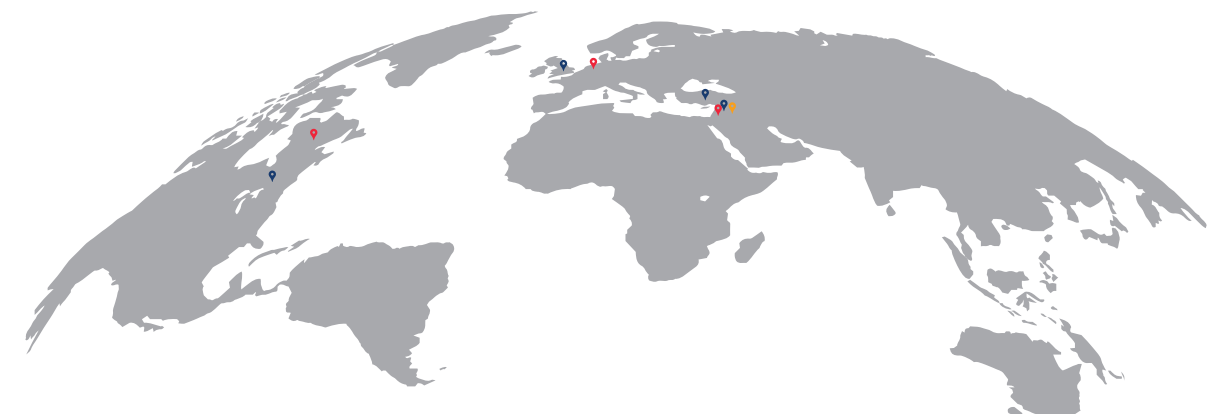
Vision

Free and dignified world based on tolerance, respect, and social justice.

Sustainability Framework



WATAN's offices around the world



Jordan - Germany - Canada
Offices under construction

Syria - Turkey - United Kingdom - United States
Active offices

Iraq
Licensed Offices Without external activity

WATAN HISTORY

2006

Syrian Business Club

- The founder, Moaz Al-Sibaati, started a network for young Syrian professionals in the diaspora.
- 2008: Syrian Business Club - Growth
- A total of 200 annual events were held.
- Activities held included professional skills training and networking events.

2011

The Syrian Dream and SYAN

- In early 2011, The Syrian Dream was established. The project aimed to advocate peaceful positive change. As the war started the group became a strong media voice for Syrians.
- In parallel, SYAN was launched and held a conference for the Syrian civil community in July 2011, which was the seed for WATAN Network
- Inside-Syria, Lebanon-based, and Lebanon cross-border humanitarian operations started. WATAN leads several health and psychosocial support programs.

2012

Founding Conference Re-Branding WATAN

- In early 2012, the number of volunteers exceeded 1000, and 30+ volunteer teams worldwide.
- This prompted the founder to call several preparatory meetings to join the efforts. This was crowned by launching the organization under the new name of "WATAN" which covers 8 organizations.
- All 8 organizations were registered in the UK and then in Türkiye.

2013

Gaziantep & Globally

- WATAN Conference: Activists today... Pioneers of institutions of civil society tomorrow, with 1000+ attendees.
- A regional cross-border office opened in Gaziantep.
- Opening the first school for the displaced inside Syria.
- Established 2 psychotherapy centers in Lebanon, benefiting 10,700 individuals through collaboration with OTI and US AID.
- WATAN's Network was launched (Empowerment - Excellence - Sustainability Participatory Approach).
- Afaq, a new institute was established under We to support university students.

2014

Mature Türkiye Programs & WCBP

- WATAN Conference: Shaping Our Future
- Launching WATAN Capacity Building Program (WCBP; a comprehensive leadership program to develop project leadership expertise in the Syrian 3rd sector.
- In the conference, WATAN launched its 4 strategic priorities for Türkiye, targeting Syrian refugees: their social cohesion and economic empowerment, their youth, and the civil community.
- Continuing to lead advocacy in international and local forums for the Syrian people and the 3rd sector.
- MOU's on economic empowerment were signed.
- 12 million Beneficiaries

2015

Protection, Education, and Integration

- WATAN Conference: Together
- Launching psychological support programs with the University of Manchester, UK.
- Facilitating workshops addressing integration challenges for Syrian and Turkish students in Turkish universities.
- Engaged 50 civil community organizations through WATAN Network members.
- 1,3 million Beneficiaries

2016

Strategic Relation, and Integrated Projects

- Receiving accreditation as a formal partner for UN Agencies.
- The first integrated mobile health unit was established in Northern Syria.
- An infrastructure project was set up for sewage systems across various villages in Aleppo.
- 2.5 million Beneficiaries

2017

Consolidation / Sustainable Intervention

- WATAN Conference: Sustainable Impact
- Consolidating the nine organizations into eight specialized programs within WATAN as a unified entity.
- Launching the Sustainable Intervention Forum at WATAN's annual convention (conference)
- Continuing to play a pioneering role in civil community development through capacity building for more than 300 NGOs.
- 2 million Beneficiaries

2018

Strategic Donor and Agricultural Value Chain

- WATAN Conference: Aspiring future
- We became a direct partner working with the EU.
- We played a leading role in supporting the agricultural value chain in Syria, particularly for olive oil and wheat.
- The first exhibition of olive products in Syria /Idlib was held.
- WATAN's Aid Expo is launched in Istanbul.
- 4.3 million Beneficiaries

2019

Innovate for Humanity/ Youth and Education

- WATAN annual convention is held in Gaziantep with an innovate for Humanity theme. We explicitly add innovation to its global messaging and advocate for more innovation in the sector with specific solutions and clear methodologies.
- WATAN runs more than 30 schools.
- 5.5 million Beneficiaries

2020

Innovation in Action/ 2025 Roadmap

- Establishing the innovation lab and implementing a new innovative shelter as part of establishing two camps, housing thousands of families.
- The 2025 roadmap was released.
- With COVID-19, We re-adjusted our operating model demonstrating agility and innovation.
- 2 million Beneficiaries



Board of Directors of WATAN



Moaz Al-Sibaai

Chairman

Founder of WATAN organization; 27 years of experience in the private sector in UK and Arab Gulf; volunteered in a number of non-profit organisations for 32 years.



Iman Ahmado

Board Member

One of WATAN's founding members; with 30 years of work experience and 17 years of experience in Voluntary work.



AbdulRahman Alhamdo

Board Member

One of WATAN's founding members; with 17 years of experience in business entrepreneurship in information technology; 12 years of volunteer work in vocational training networks and managing business start-up initiatives.



Majed Salem

Board Member

Joined WATAN in 2014; 19 years experience in Marketing, Sales and Business development; 6 years experience in essential strategic development for start-ups; experience in being a founder, participant, and consultant in voluntary work.



Fatema Obeid

Board Member

Joined WATAN in 2012; 13 years experience in Voluntary work.



Hikmat Walid

Board Member

Joined WATAN in 2015; 19 years experience in Network and Communication Technology in the UK and in the Gulf; a volunteer in a number of non-profit organisations for 9 years.



Role in Syria



Early Recovery

Early Recovery aims to contain and control the fire before it spreads and causes more harm by focusing on three main routes of action including rehabilitation to restore and recreate what has been destroyed as early as possible. Secondly, by supporting farmers in the sector of agriculture. Finally, we focus on the early stages of the calamity to raise funds via mini-fundraising projects to quickly accumulate enough finances to partially recover from any disaster. These strategies help ease the suffering by ensuring it does not develop and expand by providing the necessary emergency care and finances needed when disaster strikes.



Education & Youth

The conflict did not only end lives and destroy homes but also dreams and hopes of a better future which WATAN aims to resuscitate by providing educational programs to the most vulnerable youth that helps them to develop life skills and gives them an opportunity to face the challenges of life more effectively



Social Harmony

Community centres and peace buildings aim to address the issues raised by crisis-stricken societies, which provide platforms for discussion and peacebuilding allowing new communities to gather to compensate for the ones lost in the conflict.



Economic Empowerment

WATAN largely depends on Economic Empowerment to compensate for destroyed infrastructure and to deliver basic necessities to those displaced and harmed by the conflict. This strategy includes new market development, capacity building for skilled workers, and business incubators. These strategies ensure the security of finances in emergencies and new plans are tested to develop our finances and fundraising prospects.



Innovation

The Innovation strategy aims to apply new approaches and adapt quickly to any crisis where WATAN depends on its different labs, for example, the Physical Innovation Lab and the Innovation Lab Relief, to analyse and draw out new methods to tackle the challenges faced when providing relief and care to the vulnerable people struck by calamity.



Advocacy

WATAN employs its advocacy abilities and strategies in many cases, for example, when finding alternative tents for the refugees so they can endure the bitterly cold winter and have better protection and privacy. Our campaigns are not restricted to relief work but we also advocate for the ending of violence in north-western Syria in global events by pressurising human rights agencies to respond and end the conflict.

Situation in Syria

The humanitarian situation in north and northwest Syria remained dire in 2022, with millions of people in need of assistance due to the ongoing conflict, displacement, and economic collapse, an estimated 6.7 million people require humanitarian assistance in the region, with the majority being internally displaced persons (IDPs). The needs of the population include food, shelter, water, sanitation, healthcare, and protection.

The economic situation in the region has also worsened, with high inflation rates, a shortage of job opportunities, and a collapse in the Syrian pound's value. This has resulted in limited access to basic goods and services, exacerbating the population's humanitarian needs.

The response in north and northwest Syria faces significant challenges due to the ongoing conflict, security concerns, limited funding, and access constraints, with some areas being difficult to reach due to ongoing hostilities.

Furthermore, the COVID-19 pandemic has added another layer of complexity to the response efforts, with limited access to healthcare and vaccinations in some areas.

Funding remains a critical challenge, with the humanitarian response plan only %36 funded as of 2022. The funding gap has severely impacted the ability of aid organizations to assist the population in need» is based on information provided by the United Nations Office for the Coordination of Humanitarian Affairs (OCHA) in their «Syria: Humanitarian Response Plan 2022» report.

Despite the challenges, WATAN has provided critical assistance to the population and IDPs in need and implemented a comprehensive humanitarian response, in all regions of north and northwest Syria in 2022.

The response efforts include the provision of food, shelter, water, sanitation, and hygiene (WASH) services, healthcare, education, and protection. WATAN has also been working to address the mental health and psychosocial needs of the population, which have been severely impacted by the conflict.



Water, Sanitisation, and Hygiene

The WASH sector in North and Northwest Syria faces significant challenges due to the ongoing conflict, with limited access to safe water, sanitation facilities, and hygiene services. According to the UN Office for the Coordination of Humanitarian Affairs (OCHA), around 5 million people live in areas that are difficult to access, while an estimated 2.4 million people in North and Northwest Syria require WASH assistance. The situation is exacerbated by the limited capacity of local authorities and humanitarian organizations to respond effectively.

In response to the crisis, WATAN has been providing WASH assistance in North and Northwest Syria, working to improve access to safe water, sanitation, and hygiene for vulnerable communities. Their efforts have included distributing hygiene kits, installing septic tanks, and improving sewage waste removal. WATAN has also provided technical assistance and support to local health authorities to improve water quality and sanitation while promoting good hygiene practices among the population.

Amidst the complex and challenging humanitarian context in Syria, in 2022 WATAN's contributions to the WASH sector have been vital in addressing the urgent needs of communities in North and Northwest Syria.



Idlib & Aleppo
Areas of Implementation



60,314
Beneficiaries

Sunlit Streams:

A Jericho Tale of Resilience and Renewal

In the labyrinthine streets of Al-Atiq, where ancient tales whisper through the rubble, Aunt Kifaya, a beacon of fortitude, weaves her story in the sun-soaked city of Jericho. Here, where shadows dance with the echoes of conflict, hope finds an unexpected ally in the form of life's most precious elixir—water.

Jericho, a tapestry frayed by the threads of war, tells a story of survival against odds. Aunt Kifaya, and those who call these war-torn streets home, face a relentless struggle with water scarcity. A year-long drought, contaminated tank deliveries, and treacherous terrain—every drop becomes a testament to endurance.

Hajja Kifaya shares her journey, «Jericho, stripped of essentials, languished in thirst. Water is a distant memory. Tanks delivered uncertainty, sometimes peril. The city's narrow alleys hid tales of struggle. Then, WATAN unfurled a lifeline.»

Rays of Radiance

In the tradition of storytellers before us, the WATAN penned a new chapter. This a chapter where the sun, is not as a harsh adversary, but as a benevolent guide. A vision unfolded—to bring forth

water not through diesel hums but on the wings of sunlight, cleansing and nurturing as it flowed.

Hajja Kifaya's eyes light up, «With the organization's solar magic, water now courses through our homes. Pure, untainted, and life-giving. Amidst the throes of war, it lightened our burdens, redirecting our scarce resources to sustenance.»

Sunlit Dreams

WATAN's initiative, a tapestry woven with solar threads, envisioned two pumping stations, Al-Omran and Eastern, as the harbingers of transformation. A symphony played out, and the melody echoed through the objectives:

Wholesome Waters: The project orchestrated a chorus of clean, sterilized water, reaching every home—a melody of sustenance composed at minimal cost.

Terrain Defied: No longer confined by the limitations of tankers and unforgiving landscapes, the initiative liberated the city from the shackles of water transportation struggles.

Harmony with Nature: Choosing the sun's embrace over the hum of diesel generators, the project sang a ballad

of sustainability, reducing both pollution and operational costs.

Community Empowerment: Beyond quenching physical thirst, the initiative fostered employment and knowledge, nurturing a skilled technical ensemble to harmonize with the solar rhythm.

Echoes of Impact: Jericho's Song

This visionary venture, a rarity in the region, breathed life into 35,000 souls—Jericho's native melodies intertwined with the displaced.

As Aunt Kifaya muses, «Our gratitude to WATAN is as boundless as the sun above. May this symphony of change play on, reaching every corner of Jericho and beyond.»

In the symphony of ruins, where the cadence of war once dominated, a new refrain emerges—the hum of solar pumps, the rustle of hope in every drop. WATAN, a storyteller in deeds, etches a legacy where the rivers of Jericho now reflect not just sunlight but the resilience of a community reborn.



Health



The health sector in north and northwest Syria has been severely affected by the conflict, with reports indicating that up to %50 of the health facilities have been destroyed and up to %70 of healthcare providers have fled the country seeking safety. The ongoing conflict has also increased the mental pressure and workload for the remaining medical staff. In addition, The COVID-19 pandemic has also posed challenges to the health sector in the region.

the health sector in the north and northwest Syria faced numerous challenges in 12.2 ,2022 million people are in need of humanitarian support to access healthcare. The destruction of health facilities and the exodus of healthcare providers have limited access to healthcare services for affected populations. There is a need for medical supplies, equipment, and trained healthcare personnel to address the health needs of the affected population, including women, girls, and children.

WATAN has responded to the health sector situation in north and northwest Syria and has been actively providing healthcare services, medical supplies, and support to affected populations. WATAN has been working to address the challenges faced by the health sector, including providing emergency medical care, supporting healthcare facilities, and ensuring access to healthcare services for vulnerable populations.



Idlib & Aleppo

Areas of Implementation



86,875

Beneficiaries

The Healing Crescendo: Muhammad's Odyssey Through Displacement and Recovery

In the folds of north Syria lies Al-Ftayri, a village where stories of resilience and loss echo through the arid winds. Here, amidst the labyrinth of life, the Thær Ragheb family embraced the arrival of Muhammad, their home filled with the delicate notes of a new beginning. Little did they know, a dissonance awaited—a dislocated hip discovered a year and a half into Muhammad's tender existence.

Prelude to Displacement

The narrative unfolds with an initial operation, confining Muhammad to a bed for seven months in pursuit of healing. Yet, before the crescendo of recovery could resonate, war, with its relentless cadence, stormed through the village of Al-Ftayri, snatching Muhammad's father and compelling the family to flee to the outskirts of Armanaz in Idlib.

Muhammad's displacement journey, akin to a haunting melody, took unexpected turns. His left-footed limp, a poignant reminder of a past disrupted, cast a shadow over the dreams that once danced freely in his youthful gaze.

From Loss to Yearning

As the family grappled with the aftermath—losing not only a loved one

but also their home—the rhythm of life shifted. The priority became survival, seeking solace in the embrace of relatives in the city of Salqin. In the shadows of financial hardship, Muhammad's dream of completing his treatment languished. At 12, his only wish echoed through the years of pain: to regain normalcy.

In this narrative of hardship, a ray of hope emerged. The family heard whispers of Al-Amal Specialized Surgical Hospital, an institution of healing supported by the benevolent notes of WATAN.

A Harmonious Resurgence

Muhammad's heart swelled with anticipation at the prospect of renewed hope. The hospital, a sanctuary offering high-quality, cost-free services, beckoned like a distant refrain promising relief. Clinical examinations and meticulous X-rays uncovered dysplasia in the acetabular cavity and exposure in the left femoral third. Despite the complexity woven with the threads of time, the doctor reassured the family—an operative intervention could harmonize with the prospect of recovery, staving off further joint degeneration.

Post-operation, Muhammad found solace in the hospital's care for two weeks, followed by a vigilant monitoring

phase over two and a half months—a dance of recovery in movements and moments.

Echoes of Gratitude

In the quietude of healing, Muhammad reflected, «The treatment at Al-Amal Hospital enveloped me in comfort. After the operation, a new melody of hope played within. My dreams now resonate with the desire to study and become a doctor—a healer to those in pain. My sincere gratitude extends to the hospital staff and the silent benefactors providing unwavering support.»

Muhammad's mother, a stoic narrator of the family's tale, added, «Through seven months of plaster and the upheaval of displacement, Al-Amal Hospital became our sanctuary. We offer prayers for Muhammad's complete recovery and sustained well-being.»

A Tapestry of Compassion

As Muhammad envisions a future in the healing arts, the narrative woven through his life becomes a testament to the transformative power of compassion. Al-Amal Hospital, an instrument in the dance of humanitarian efforts, stands as a silent but resonant tribute to the generosity of the Chairmen of the Boards, directors, supporters, donors, and global organizations.

In WATAN's fashion, Muhammad's journey unfolds as a poignant narrative—a dance of resilience rising above the dissonance of displacement, echoing hope and healing through the corridors of Al-Amal Hospital.



Shelter and Non-Food Items (SNFI)

The shelter and non-food items sector in North and Northwest Syria faced significant challenges in 2022 due to the ongoing conflict and humanitarian crisis in the region. The conflict has resulted in widespread displacement, destruction of infrastructure, and lack of access to basic necessities, including shelter and non-food items.

In 2022, North and Northwest Syria continued to witness ongoing conflict, resulting in the large-scale displacement of civilians. According to the United Nations Office for the Coordination of Humanitarian Affairs (OCHA), an estimated 2.8 million people were displaced in the region as of 2022, with many living in overcrowded and inadequate shelters, including informal camps, and damaged buildings. The harsh weather conditions, including heavy rains, flooding, and extremely cold temperatures, further exacerbated the already dire situation, putting vulnerable populations at increased risk.

The needs in the shelter and non-food items sector in North and Northwest Syria remained urgent in 2022. Key needs included adequate shelter, essential household items, and access to basic water, sanitation, and hygiene (WASH) facilities. Displaced families, especially women, children, the elderly, and persons with disabilities, faced heightened vulnerabilities and protection risks.

WATAN responded to the shelter and non-food items sector needs in North and Northwest Syria in 2022 and provided emergency shelter assistance, essential household items, and WASH services to displaced populations, with a focus on vulnerable groups, including distribution of tents, tarpaulins, and other shelter materials, as well as cash assistance for rent, repairs, and construction of shelters. WATAN has also been supporting the provision of essential household items, including blankets, mattresses, and kitchen sets.



Idlib & Aleppo

Areas of Implementation

173,470

Beneficiaries



Weaving Hope

Hajja Umm Muhammad's Odyssey through Displacement

In the haunting aftermath of profound loss, Hajja Umm Muhammad emerged as a quiet warrior, tasked with safeguarding the fragments of her family amidst the cacophony of war. The relentless dance of shells and explosive barrels in the Hama countryside became the backdrop for her journey—an odyssey marked by resilience, struggle, and an unyielding quest for refuge.

A Harmony of Survival

For three years, she sought sanctuary in the city of Idlib, where the whispers of warplanes painted an unsettling tableau in the skies above. Yet, the ever-present danger propelled her once more into the abyss of uncertainty. Battling severe joint pain and leaning on a wooden crutch, she navigated the unforgiving terrain in search of a sanctuary, ultimately finding a transient home amidst agricultural trees alongside her five-child son's family.

In the midst of chaos, the Syrian citizens faced choices—choices laden with the bitter taste of leaving behind material possessions and cherished memories. The canvas of her existence transformed into a tent, its walls mere pieces of cloth offering a fragile shield from the psychological terror that lurked beneath the explosive shells.

Tears of Resilience

As tears welled in her eyes, Hajja Umm Muhammad unveiled a narrative of five years etched with hardship. «I am over 65 years old, and living in a tent is an unforgiving reality,» she shared. Winter brought rain that seeped through, transforming the ground into a muddy morass, while the relentless wind occasionally lifted the tent into the air. Layers of clothing became a defense against bitter cold, and seeking refuge under trees provided respite from the scorching summer sun. The harsh truth of financial constraints left them powerless to alter their circumstances.

Staying in a tent, a seemingly straightforward notion, proved to be a complex reality, particularly with the presence of children. The absence of electricity, basic facilities, health services, and educational opportunities cast a shadow over any semblance of a decent life.

A Tapestry of Transformation

In the midst of this tumult, hope materialized in the form of WATAN. After a meticulous assessment of her family's dire circumstances, the organization orchestrated Hajja Umm Muhammad's relocation. A two-room house, adorned

with essential health facilities, materialized in the Tamaym village, nestled between the cities of Salqin and Harem in the Idlib countryside.

This was not just a change of residence; it was a transformation. The new abode, equipped with electricity and water, became a sanctuary. Children gained access to education and healthcare, and a mosque emerged as a communal anchor in the heart of the village.

A New Narrative: Warmth and Safety

Visiting Hajja Umm Muhammad in her newfound haven, a poignant scene unfolded—a grandmother encircled by her grandchildren, a smile adorning her face, a testament to the reconciliation of her thoughts. «We now feel warm and safe under these roofs. Thank you very much. The soul has returned to us a little,» she expressed, gratitude flowing like a river. In her heartfelt conclusion, she extended blessings to the Kuwaiti Discrimination Society and the Watan Relief Organization for their transformative contributions.

This village, a collaborative endeavor between the Kuwaiti Discrimination Society and WATAN, emerged as a symbol of hope. As Hajja Umm Muhammad dreams of all remaining families in informal camps finding sponsorship, her story echoes as a testament to the resilience that thrives amidst the chaos—the spirit of those who believe in the redemptive power of compassion.



FSA (Food Security and Agriculture)

In 2022, the persistent conflict in northern and northwestern Syria continues to exert profound repercussions, notably in the realm of food security. The protracted conflict has triggered mass displacement, severely disrupting agricultural activities and dismantling vital food production mechanisms. The very infrastructure sustaining agriculture, encompassing farms and irrigation systems, has fallen victim to widespread damage and destruction, exacerbating the challenges faced by vulnerable populations.

Compounding these adversities, the economic fallout of the ongoing COVID-19 pandemic has introduced further complexities. Economic challenges, including the devaluation of the local currency and inflation, have significantly impacted the affordability of food for those most at risk within these regions.

In response to these multifaceted challenges, WATAN has emerged as a stalwart humanitarian force, diligently addressing the critical needs of livelihoods and livestock farmers. Recognizing the imperative of rehabilitating essential infrastructure, WATAN is actively engaged in revitalizing local food production. Livestock keepers, a vital component of the agricultural landscape, find support in the form of access to tools and assistance, enabling them to resume and sustain their crucial activities.

WATAN's pivotal role in providing food assistance to those affected by conflict and displacement underscores its commitment to alleviating the complex challenges faced by communities in northern and northwestern Syria. Through a holistic and strategic approach, WATAN remains at the forefront of humanitarian efforts, making a tangible impact on the food security landscape in the region.



Idlib & Aleppo
Areas of Implementation



16,804
Beneficiaries

Empowering Livelihoods

WATAN's Pioneering Efforts in Nurturing Animal Husbandry Resilience

In the arduous landscape of northwestern Syria, a region marred by the enduring shadows of conflict, the livestock sector emerges as a symbol of resilience and economic sustenance. However, it grapples with a myriad of challenges—a convergence of factors including erratic rainfall, soaring feed prices, the omnipresent specter of animal diseases, and the constriction of local market avenues. Against this backdrop, livestock breeders, particularly those tending to sheep and goats, find themselves at the intersection of necessity and adversity, compelled to recalibrate their strategies to safeguard their herds.

A Breeder's Chronicle: Riyad Rifaat's Odyssey of Perseverance

Meet Riyad Rifaat, a devoted cow breeder displaced from the village of Awaid due to bombings, finding an unlikely refuge in the village of Kalli. Amidst tents that serve as both home and sanctuary for his cattle, Rifaat bears witness to the profound complexities of sustaining livestock amidst tumultuous times. «In recent years, conditions for caring for them have been very difficult,» he shares, tracing the contours of his struggle. The devaluation of the local currency and the relentless surge in the cost of essential resources for cattle care forced Rifaat into the agonizing decision of downsizing his herd.

Rifaat sheds light on the intricate dance

with diseases that often plague cows during the critical birthing stage. It was during this juncture that the ' project, supporting cow breeders through artificial insemination, became a lifeline. The specialized veterinary team, a beacon of expertise, diagnosed and addressed infections in the uterus that thwarted pregnancy. A meticulously executed plan spanning three months—comprising vaccination campaigns, uterine cleaning, continuous examinations, and infection control—yielded positive results. The fruits of their labor manifested in increased milk production and, more importantly, restored hope for struggling breeders.

A Grateful Ode to WATAN's Compassion

With heartfelt gratitude, Rifaat extends his appreciation to the Watan team. «We have benefited greatly. May God reward you all, the WATAN team and supporters,» he expresses, acknowledging the profound impact of the initiative on his life and the lives of others dependent on livestock income.

WATAN's Enduring Legacy in Animal Husbandry

In the face of formidable challenges, WATAN's impact on the animal husbandry sector in northwest Syria resonates as a testament to unwavering commitment and transformative potential. The organization's dedication to bolstering

livestock farmers, providing essential veterinary services, and sustaining livelihoods positions it as a beacon of hope for communities grappling with vulnerabilities. In the delicate balance between food security and economic stability, WATAN emerges as a stalwart ally, exemplifying the indispensable role of humanitarian organizations in addressing urgent needs amid conflict and crises.

Project Illumination: Nurturing Livelihoods, Ensuring Sustainability

Strategically spanning rural Idlib and Aleppo, the project casts its protective wings over vulnerable communities in Jisr al-Shughur, Maarat Misrin, Binnish, Jericho, and Armanaz in Idlib, as well as Akhtarain, Azaz, Al-Bab, Soran, and Marea in Aleppo. Its core objectives revolve around supporting both cow and sheep breeders through artificial insemination and reproductive treatments. The overarching goal is clear—to enhance milk yield for cows, thereby uplifting economic conditions for breeders and mitigating production costs. For sheep breeders, the focus is twofold: augmenting the rate of twin births while concurrently alleviating production costs.

The project's genesis stems from a meticulous needs assessment, revealing critical gaps in veterinary medical staff and the prohibitive costs of reproductive treatments. As it strives to revitalize the livestock sector, the initiative becomes a beacon of empowerment, addressing the economic hardships that have led to a decline in cattle numbers.

In conclusion, WATAN's endeavor to breathe life into the animal husbandry sector in northwest Syria extends beyond mere project dynamics. It's a narrative of empowerment, resilience, and hope—a narrative that envisions a sustainable future until the echoes of protracted conflict dissipate, and the profound humanitarian and economic crises find resolution.



Education

In the wake of the enduring conflict, its prolonged duration has resulted in the mass displacement of communities, severely disrupting the educational pursuits of numerous children. The consequential impact is evident through the widespread damage inflicted upon schools, either demolished or impaired due to conflict-related activities, thereby impeding access to educational facilities. In 2022 the overarching challenge further manifests in a dearth of essential resources, encompassing a shortage of qualified educators, educational materials, and requisite infrastructure funding.

Addressing these formidable challenges necessitates a multifaceted approach aimed at revitalizing the education sector:

In response to these critical needs, WATAN has emerged as a dedicated actor in the humanitarian landscape. WATAN's initiatives span a spectrum of interventions designed to uplift the education sector:

WATAN is actively engaged in efforts to facilitate access to education, ensuring that children, even in the most challenging circumstances, can avail themselves of the transformative power of learning.

School Supplies Delivery:

Recognizing the importance of equipping students, WATAN diligently delivers school supplies, bridging resource gaps and empowering students to engage in their educational journeys.

WATAN's commitment extends to the restoration of damaged schools. By contributing to the rehabilitation of educational infrastructure, the organization aims to create safe and conducive spaces for learning.

Beyond education, WATAN underscores the critical importance of child protection. Through the establishment of temporary learning spaces and the distribution of educational materials, the organization actively contributes to the holistic well-being of children affected by conflict.

In navigating the complexities of the humanitarian context, WATAN's initiatives in education and child protection stand as a beacon of hope, demonstrating the profound impact that targeted interventions can have on the lives of those grappling with the aftermath of conflict.



Idlib & Aleppo

Areas of Implementation



4,554

Beneficiaries



From Silence to Song

Ahmed's Harmonious Resurgence

In the tapestry of hardship forged by conflict, Ahmed Abdel Razzaq Al-Kul stands as a poignant thread, once a skilled carpenter in the vibrant city of Maarat Al-Numan. His life, once marked by the rhythmic sounds of his workshop, took a tragic turn in 2017 when the deafening roar of a shell shattered the tranquility of his home. The ensuing chaos left not just physical wounds but irreparable damage to the very fabric of his existence.

As Ahmed, his wife, and their two young sons, aged 2 and 4, sat in the courtyard of their house that fateful day, the shell's impact echoed through their lives. Miraculously, his family survived with minor injuries, but Ahmed woke up in a hospital bed to a painful reality – every inch of his body covered in wounds, his legs concealed by blankets, and the realization that he was now disabled.

The year 2020 brought further upheaval to the South Idlib Governorate due to intensified military actions. Ahmed, now with his parents, wife, and three children, joined the waves of displaced residents seeking refuge in northern Idlib. The journey, a kaleidoscope of movements from one camp to another, eventually led the family to Mashhad

Ruhin camp, home to fellow displaced souls from Maarra.

The trauma of displacement, coupled with Ahmed's newfound disability, cast a shadow of extreme misery over his life. The loss of his home and possessions magnified his internal sense of disability, pushing him into a state of social withdrawal and tension with his family. Ahmed, once the breadwinner and pillar of support, now found himself sitting for hours in his wheelchair, lost in the labyrinth of his thoughts.

In February 2022, a glimmer of hope pierced through the darkness in the form of WATAN's Early Childhood Development team. Conducting Ahlan Simsim activities at Maimouna Center within Mashhad Rouhin camp, the team encountered Ahmed during their outreach. Hassan and Abdul Moein, session coordinators with hearts attuned to empathy, extended an invitation to Ahmed to join the project. However, his initial response reflected a deep-seated stigma and isolation: «What benefits can I get from my chair?» he questioned.

Undeterred, the team approached Ahmed with friendship, gradually gaining his trust. A decision was made to initiate contact at Ahmed's pace, respecting

his journey toward acceptance. After a series of friendly visits, Ahmed reluctantly agreed to attend an awareness session at home. It was a crucial step towards breaking the walls of isolation.

Recognizing Ahmed's unique challenges, the Early Childhood Development team, particularly Abdul Moein, began providing assistance to help Ahmed attend sessions at the center. His presence there, initially met with sympathetic glances, soon evolved into a testament to the transformative power of community and support.

In July, Ahmed shared his story with a radiant smile, a stark contrast to the somber figure from months before. «I have three children, two boys, and a two-year-old girl,» he beamed. His journey through the Ahlan Simsim Families sessions became a turning point. What began as a reluctant acknowledgment of his role in the program blossomed into a commitment to be a supportive father.

Ahmed's metamorphosis, from a state of frustration and isolation to a beacon of positivity, mirrors the nuanced impact of WATAN's interventions. Beyond the physical rehabilitation and healing of wounds, it's a narrative of self-discovery, resilience, and the rekindling of human connections. Ahmed's journey underscores the profound impact of tailored humanitarian initiatives in restoring not just shattered lives but the innate human spirit yearning for renewal and connection.



Protection

As of 2022, the protection and PSEA (Protection from Sexual Exploitation and Abuse) awareness sector in north and northwest Syria is confronted with complex challenges due to the prolonged conflict, causing significant vulnerabilities and risks for the civilian population.

Displacement: Widespread displacement has exposed individuals and families to protection risks, including gender-based violence, child exploitation, and psychosocial distress.

Infrastructure Damage: Conflict-related damage to essential infrastructure, such as health and social service facilities, hinders the delivery of adequate protection services.

Psychosocial Impact: Prolonged exposure to conflict has led to severe psychosocial consequences, necessitating comprehensive mental health and psychosocial support interventions.

Gender-Based Violence (GBV): The vulnerability of women and girls to gender-based violence has increased, demanding targeted efforts to prevent and respond to GBV incidents.

WATAN plays a crucial role in providing protection services, including awareness campaigns, psychosocial support, and community-based protection initiatives.

The protection sector in north and northwest Syria continues to grapple with the multifaceted challenges stemming from the protracted conflict.

WATAN's ongoing efforts are directed toward strengthening protection mechanisms, enhancing awareness of protection issues, and providing targeted support to the most vulnerable groups.

Coordination among humanitarian actors, local authorities, and international organizations remains crucial to effectively address the evolving protection needs in the region.



Idlib & Aleppo

Areas of Implementation



16,831

Beneficiaries

From Awareness to Action

WATAN's PSEA Story

In the intricate tapestry of WATAN's mission in north and northwest Syria, a compelling narrative unfolds—a testament to the transformative impact achieved through the Protection and PSEA (Protection from Sexual Exploitation and Abuse) Awareness initiative.

At the forefront of this narrative are 85 men and 65 women from the community who, over the course of the project, underwent rigorous PSEA training. This training, a cornerstone of WATAN's commitment to empowerment, laid the groundwork for a nuanced and comprehensive approach to community protection.

The protection team, akin to skilled artisans, meticulously developed assessments, engaging 150 households in a collaborative process.

The impact reverberated through 18 camps, where over 7,000 Beneficiary Needy Families (BNFs) participated in SEA awareness sessions. From child attendees to men, women, the elderly, and Persons with Disabilities (PWD), the narrative unfolded as a celebration of inclusivity and accessibility.

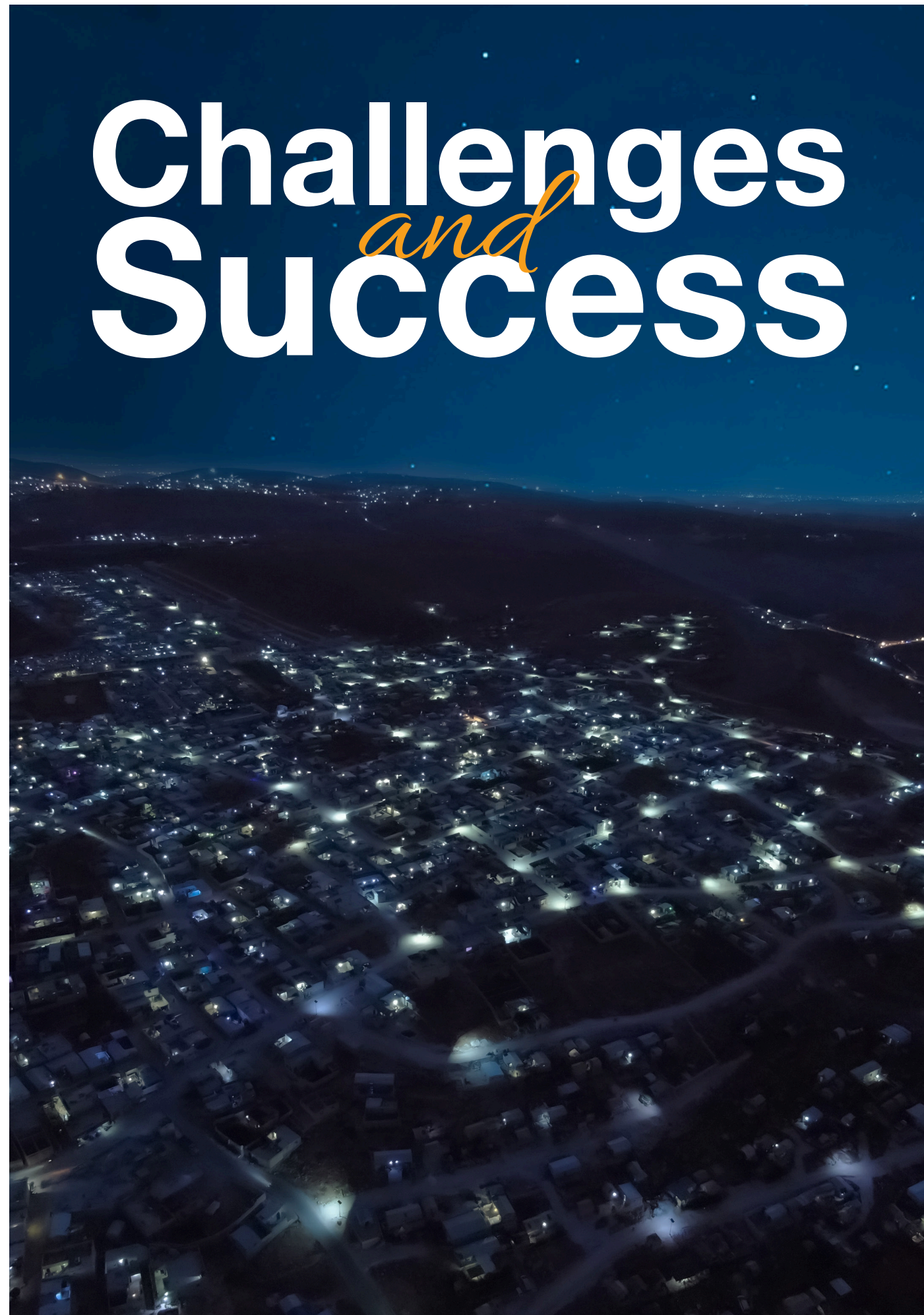
Protection teams demonstrated a commitment to quality, conducting SEA awareness sessions for diverse categories within the camps. The canvas expanded to include stakeholders—medical center staff, WATAN's contractors, bakeries, and shops—all receiving essential PSEA training. While the journey encountered challenges, the team surpassed %70 of its complementary activity target, showcasing resilience and determination.

In a stroke of innovation, WATAN introduced a PSEA calendar for 2022—a dynamic artifact seamlessly blending SEA awareness and reporting information. Learning visual tools enriched children's sessions, transforming education into an art form.

The narrative embraced technology, with PSEA messages reaching 11,000 individuals via phone numbers. Posters and banners strategically placed in 18 camps amplified impact, benefiting over 90,000 individuals. Beyond the immediate project period, the story extended to 98 humanitarian staff, with seven organizations expressing interest in joining WATAN's PSEA Network.

this is more than a story—it's a vivid exploration of resilience, adaptability, and collaborative spirit. WATAN's Protection and PSEA Awareness initiative emerges not just as a recounting of achievements but as a living testimony to the indomitable human spirit and the transformative power of community-driven change.





Challenges *and* Success

Challenges:

- The year 2022 posed immense challenges for WATAN as it navigated the complex humanitarian landscape in north and northwest Syria. The ongoing conflict, economic collapse, and the added complexities of the COVID-19 pandemic intensified the dire humanitarian situation, with millions in need of assistance. Limited funding, security concerns, and access constraints further impeded the organization's response efforts. The destruction of health facilities and mass displacement strained the health and shelter sectors, while the economic fallout exacerbated food insecurity. WATAN faced the arduous task of addressing the multifaceted needs of vulnerable populations in the face of these formidable challenges.

Successes:

- Despite the daunting challenges, WATAN achieved significant successes in its comprehensive humanitarian response throughout 2022. The organization played a pivotal role in the Water, Sanitisation, and Hygiene (WASH) sector, reaching over 60,000 beneficiaries in Idlib and Aleppo by improving access to safe water and hygiene services. WATAN's health sector interventions, serving over 86,000 beneficiaries in critical locations, included providing healthcare services, medical supplies, and support to affected populations. In shelter and non-food items, WATAN assisted over 173,000 beneficiaries, addressing urgent needs for emergency shelter, essential household items, and water, sanitation, and hygiene facilities. The organization's food security and agriculture initiatives, benefitting over 16,000 individuals, focused on revitalizing local food production amid widespread agricultural disruptions. Additionally, WATAN's dedication to education and child protection positively impacted over 4,500 beneficiaries, delivering school supplies and contributing to the rehabilitation of damaged schools.

Looking Ahead:

- As WATAN reflects on the challenges and successes of 2022, the organization remains committed to its mission of alleviating the suffering of vulnerable populations in Syria. Looking ahead, WATAN aims to intensify efforts to secure additional funding and overcome access constraints to continue providing critical humanitarian assistance. With a focus on strengthening coordination among humanitarian actors, local authorities, and international organizations, WATAN strives to enhance its impact and address evolving protection needs in the region. The organization's resilience and commitment underscore its determination to make a tangible difference in the lives of those affected by the protracted conflict, providing hope and essential support in the face of ongoing adversities.



Financial Report

Income

WATAN total income in 2022 is \$ 21.3 Million.

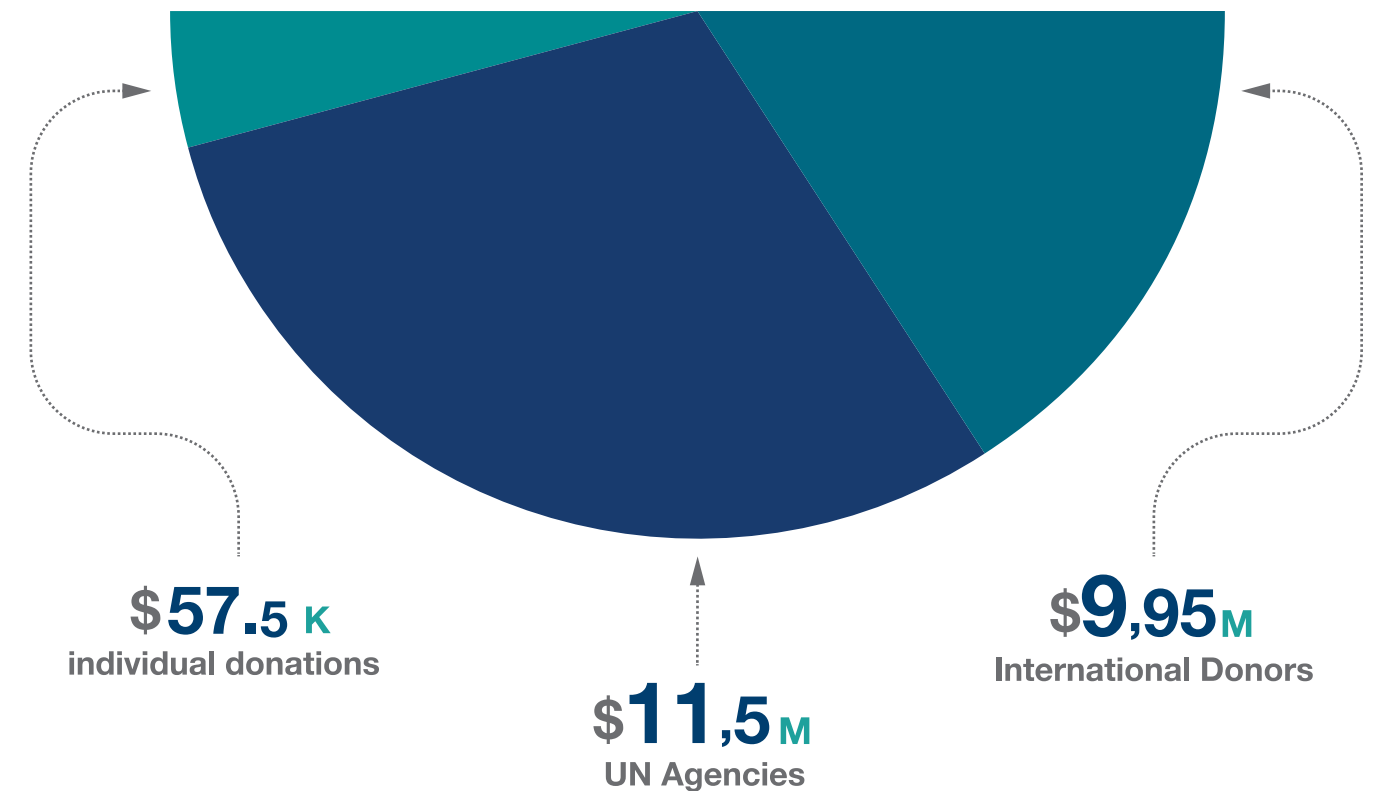
The income was received by different sources as the following:

- Institutional donors: \$ 1.1M compared to \$2.4M in 2021.
- International institutions \$20.2M compared to \$ 24.8M in 2021.
- Other sources of income: \$256K individual donations and income from fundraising is compared to \$300K in 2021.

The Total income for aid and development interventions in Syria was \$ 21.5M, \$ 71K in UK and \$44K in Turkey.

\$21,5M

income received by different sources



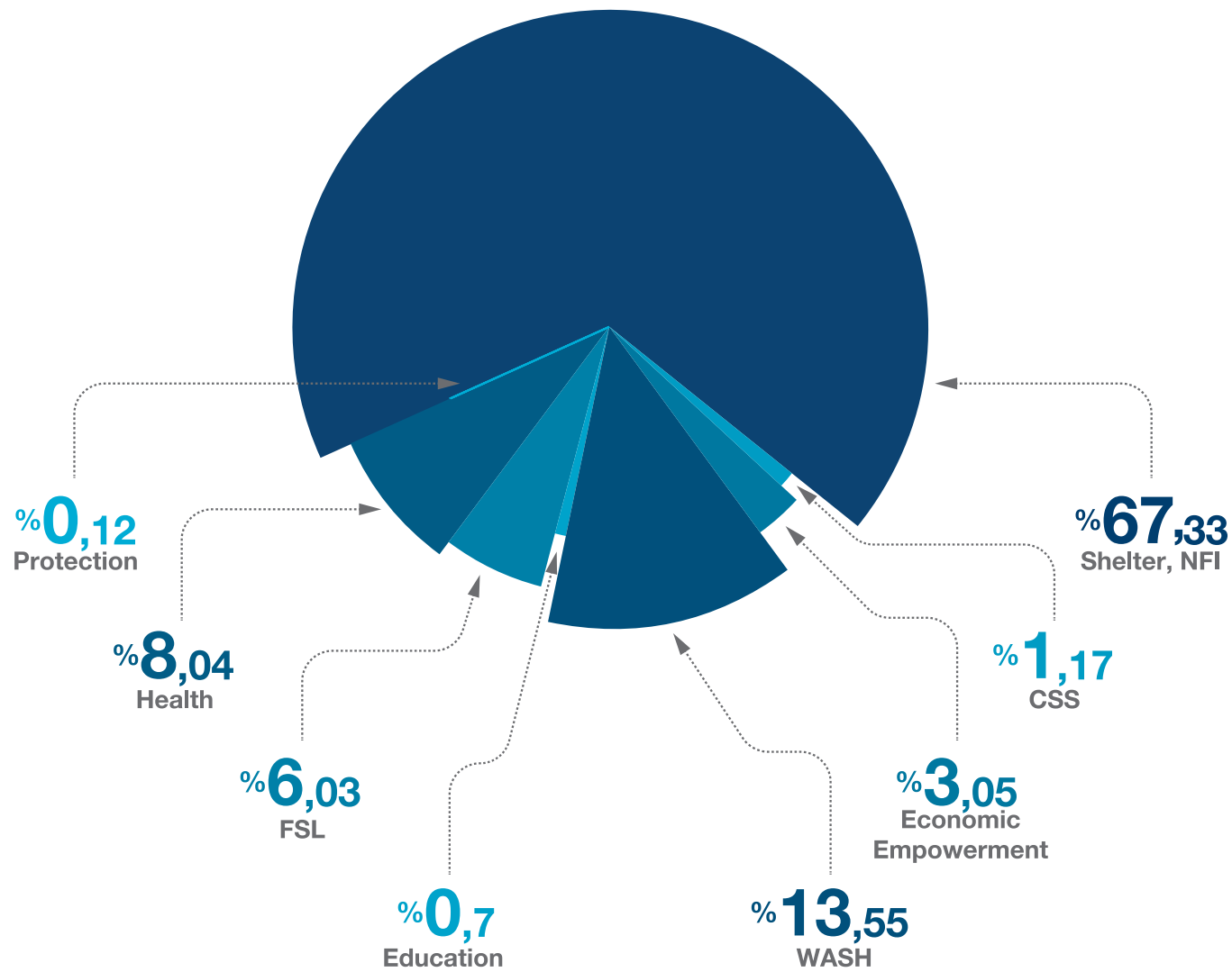
Expenditures

WATAN total expenditure in 2022 was \$19.4 M Which is less than 2021 by \$ 8M.

The expenditures were split into two main categories as the following:

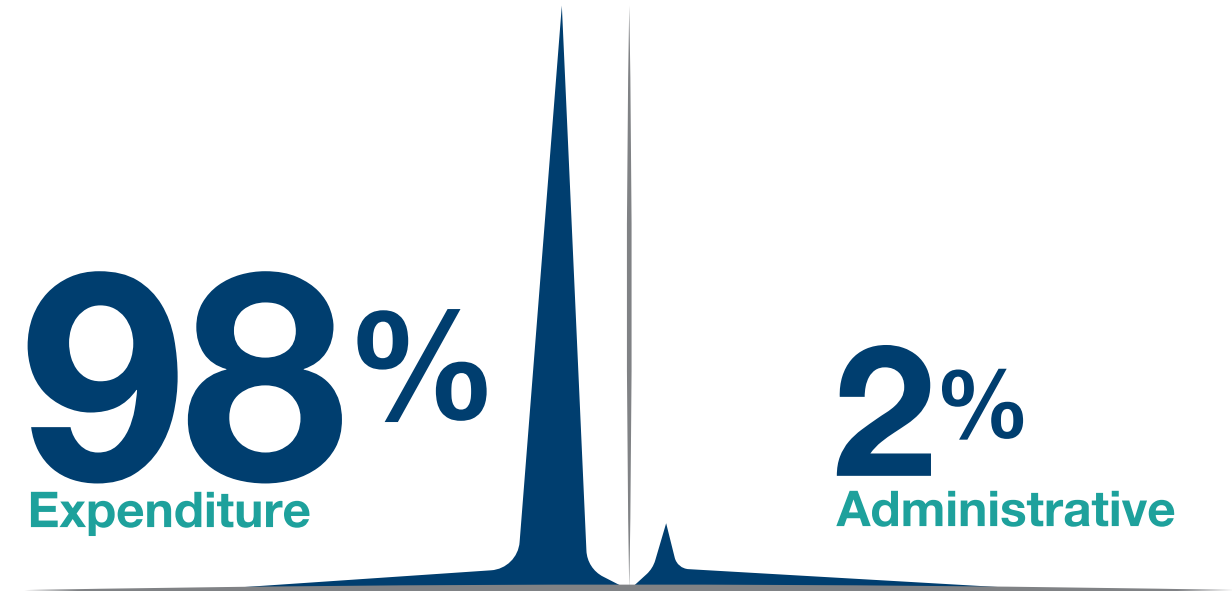
- Operational expenditures: \$ 18 M for the cost of direct implementation and related staff.
- Administrative expenditures: \$ 1.5 M for the cost of running the organization and the indirect supervision of the program's implementation.

The Structure of the Expenditures per Sector was as the following:



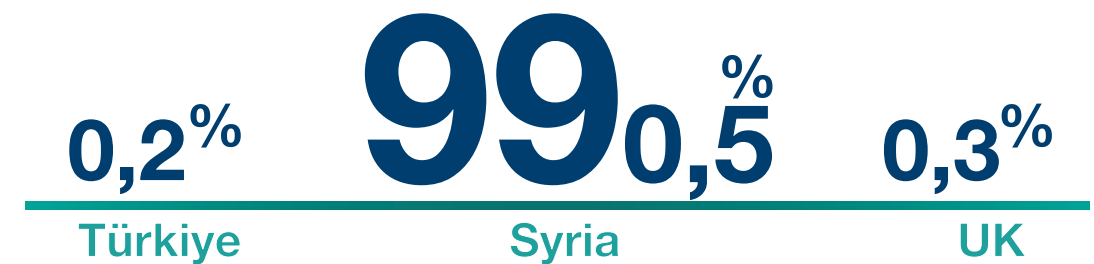
Unrestricted Income & Admin Share

As per WATAN expenditure for the year 2022, the percentage of operational expenditure is equal to %92 of the total expenditure while %8 was administrative cost.



Fund Distribution by Region

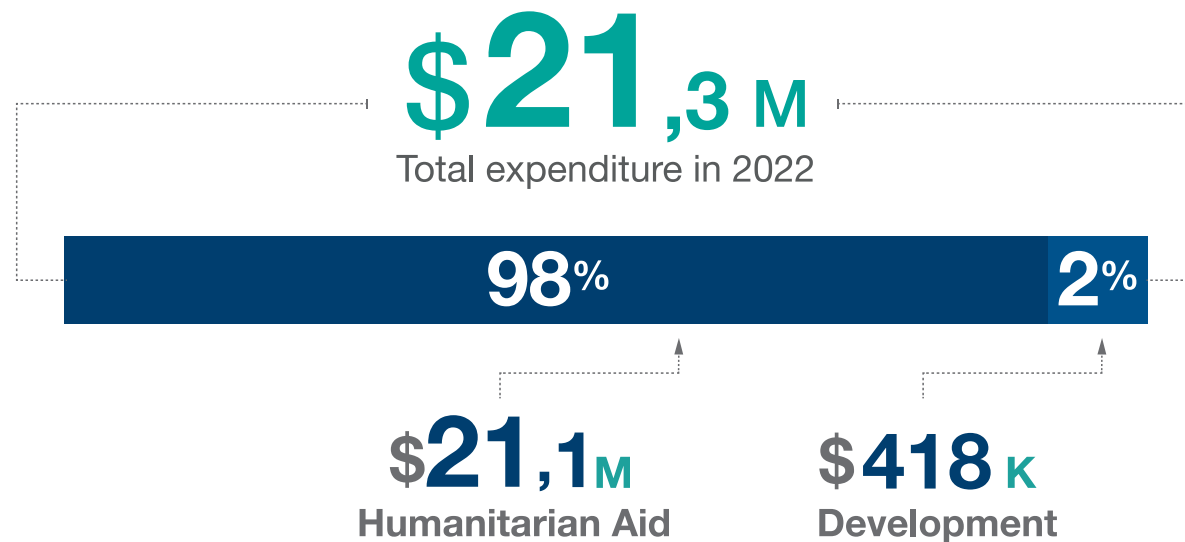
The fund spent by WATAN came from Syria \$ 21.5M, \$ 71K in UK and \$44K in Turkey. as the following:



Source and Nature of Fund

WATAN has spent \$ 21.3M of the total fund for the year 2022 from International Programs and \$ 256K from individual donations and fundraising events.

The fund represents \$ 21.1M aid and \$ 418K development as the following:



ACCOUNTING PRINCIPLES OF THE ORGANIZATION

- Basis of Preparation

The financial statements have been prepared on an accrual basis of accounting with respect to income and on an accruals basis with respect to expenditure, in accordance with the accounting policies as set out below. These accounting policies are in accordance with the policies and guidelines of WATAN. However, in relation to the accounting treatment of the inventories, WATAN's Policy is to expense these immediately to the statement of financial activities at acquisition. This is deemed to be a more appropriate accounting treatment than the treatment normally afforded to such transactions in generally accepted accounting principles (GAAP), which would require these transactions to be recorded as assets subject to annual accounting charges as these assets are utilized or consumed. These policies are in line with the normal accounting policies applied by International Non-Government Organizations (NGOs), which are observed due to their working environment.

- Fund Accounting Policy

Restricted funds are those donated for use in a particular area or for specific purposes, the use of which is restricted to that area or purpose. Restricted revenue is generated from the projects whose terms are specified with the Donor before the implementation starts. These types of contracts mainly include type and scope of work, implementation duration, expense type and contract value. Restricted revenue is generated as the same amount as the expenses charged on the Project.

Unrestricted income funds are general funds that are available for use at the trustees' discretion in furtherance of the objectives of the charity.

- Incoming Resources

The principal accounting policies adopted is revenue recognition revenue is recognized under the percentage of completion method which allocates the expenses to the donors based on approved financial reports.

Voluntary income including donations and grants that provide core funding or are of a general nature is recognized where there is entitlement, certainty of receipt and the amount can be measured with sufficient reliability.

Income from charitable activities includes income recognized as earned (as the related goods or services are provided) under contract.

- Resources Expended

Liabilities are recognized as soon as there is a legal or constructive obligation committing the charity to the expenditure. All expenditure is accounted for on an accruals basis and has been classified under headings that aggregate all costs related to the category.

Costs of generating funds are the costs associated with attracting voluntary income.

Charitable expenditure comprises those costs incurred by the charity in the delivery of its activities and services for its beneficiaries. It includes both costs that can be allocated directly to such activities and those costs of an indirect nature necessary to support them.

- Admin Support Costs

Support costs include central functions and have been allocated to activity cost categories on a basis consistent with the use of resources, for example, allocating property costs by floor areas, or per capita, staff costs by the time spent and other costs by their usage.

Special Thanks





With your support We continue to succeed



WATANFoundation
www.WATAN.foundation

