



2020 ANNUAL REPORT



WATANFoundation
www.WATAN.foundation



Contents

Word from the WATAN President	6
About WATAN	8
Board of Directors of WATAN	12
Role in Syria	14
WATAN's Programmes	16
WATAN's Participation in International Forums	46
Challenges and Success	48
The financial Report	49
Special Thanks	54





Word from the WATAN President

As we look back on the challenges and successes of the year 2020, I am humbled by the resilience and dedication of our team, partners, and donors. We faced unprecedented obstacles due to the COVID19- pandemic, yet we were able to adapt and innovate to continue serving those in need.

At the beginning of the pandemic, we quickly transitioned to remote work, allowing us to maintain our operations while prioritizing the health and safety of our staff and beneficiaries. This was no small feat, but our team rose to the challenge, leveraging technology and communication tools to ensure that our programs continued to make a positive impact.

Despite the pandemic, we remained committed to fulfilling the promise we made in 2019 to improve shelter for the vulnerable communities we serve. We introduced innovative and sustainable solutions that provide safe and secure housing, support local economies, and promote environmental sustainability.

Throughout the year, we executed several significant projects, including providing emergency relief to those affected by conflict and natural disasters, delivering healthcare services to underserved communities, and providing education and livelihood opportunities to empower people to build better futures for themselves and their families.

Our success in these projects is a testament to our unwavering commitment to serving beneficiaries from the beginning of our establishment until now. We always strive to put the needs of those we serve at the forefront of our work, and we are proud of the progress we have made together.

Of course, we faced challenges along the way. The pandemic forced us to find flexible and innovative solutions to overcome logistical and operational obstacles. Yet, we never wavered in our commitment to delivering aid and support to those who need it most. We are grateful for the support and partnership of donors and partners in international and global organizations who stood by us during this time.

As we move forward, we remain committed to development and innovation, continually exploring new ways to maximize our programs' impact and empower those we serve to achieve long-term, sustainable change. We are optimistic about the future, knowing we can achieve great things when working together towards a common goal.

I want to express my deepest gratitude to all of our donors for your trust and support. Your generosity enables us to make a meaningful difference in the lives of those we serve, and we could not do this work without you. We pledge to continue working with agility, optimism, and a deep sense of responsibility to positively impact the world.

Thank you for being our partner in this vital work.

Sincerely,
Moaz Al-Sibaai



Who We Are

WATAN is a leading Civil Society Organization delivering emergency relief, third-sector support, and long-term international development projects.

WATAN is committed to helping people and reviving communities. WATAN is an independent, non-governmental, apolitical, and non-sectarian organization.

We operate several integrated programs with the aim of addressing humanitarian emergency response and sustainable community revival through a holistic and transformative approach.

We believe in the role of Civil Society in the various phases of intervention. Thus, we invest in supporting and developing Civil Society in our areas of reach. We also create platforms for coordination and integration to maximize impact on communities served.

To achieve our goal, we seek to be the preferred partner for international agencies in areas of specialization and reach.

WATAN was established in 2012 as a framework merging a number of organizations and groups that had extensive community development work going back to 2006.

Mission

Our mission is to develop a sustainable, healthy and educated community, based on inclusive society that positively engages, supports and improves the lives of each individual, regardless of their gender, faith or ethnicity. We deliver programs that rebuild lives and maintain community social cohesion by providing transformative programs in reliefs, post-conflict-peace-building, education, economic empowerment, advocacy and development of strong Civil Society.

Vision

Free and dignified world based on tolerance, respect, and social justice.



Sustainability Framework



WATAN's offices around the world



WATAN History

2006

■ Syrian Business Club

The founder, **Moaz Al-Sibaai**, started a network for young Syrian professionals in the diaspora.

2008

■ Syrian Business Club - Growth

A total of 200 annual events were held.

Activities included professional skills training and networking events.

2011

■ The Syrian Dream and SYAN

In early 2011, The Syrian Dream was established. The project aimed to advocate peaceful positive change. As the war started, the group became a strong media voice for Syrians.

In parallel, SYAN was launched and held a conference for the Syrian civil community in July 2011- this was the seed for WATAN Network.

Cross border humanitarian operation began within Syria, Lebanon and across Lebanon's border. WATAN began leading several health and psychosocial support programs.

2012

■ 2nd Conference Re-Branding WATAN

In early 2012, the number of volunteers exceeded 1000 and amounted to 30+ volunteer teams worldwide.

Prompted by this success the founder called several preparatory meetings to join the efforts. This was crowned by launching the organization under new name of "WATAN" which covers for 8 organizations.

All 8 organizations were registered in the UK and then in Turkiye.

2013

■ Gaziantep & Globally

A regional cross-border office opened in Gaziantep. We opened our first school for the displaced inside Syria.

WATAN's Network was launched. Afaq, a new institute was established under our organisation with the aim of supporting university students.

We held their 3rd conference bringing in 1000+ attendees and it was announced the conference will be held annually.

2014

■ Mature Türkiye Programs

In the 2014 Annual Conference, we launched our 4 strategic priorities for Turkiye, targeting Syrian refugees; their social cohesion and economic empowerment, their youth and the civil community.

We continued to lead advocacy in international and local forums for the Syrian people and the 3rd sector.

MOU's on economic empowerment were signed.

2015

■ Consolidation & WCBP

9 WATAN organizations merged into 8.

We launched the WATAN Capacity Building Program (WCBP), a comprehensive leadership program to develop project leadership expertise in Syrian 3rd sector.

Reached 2.5m annual beneficiaries inside Syria and its neighboring countries.

Our Network members reached a total of 80 civil community Organizations.

2016

■ Strategic Relation, Infrastructure and Integrated Projects

The first integrated mobile health unit was established in Northern Syria.

Infrastructure projects were set up to build sewage system across various villages in Aleppo.

We designed a Cost Recovery Model for several key intervention activities.

We received accreditation as a formal partner for UN Agencies.

We advocated the 2nd wave of the Syrian 3rd sector.

2017

■ Sustainable Intervention/ 3rd Sector Support

We launched the sustainable Intervention Forum during WATAN's annual conference.

The organisation continued to play a pioneering role in civil community development through capacity building for more than 300 NGOs.

WATAN conferences continue to be the biggest Syrian civil community gatherings.

2018

■ Strategic Donor and Agriculture Value Chain

We became a direct partner working with the EU.

We played a leading role in supporting the agricultural value chain in Syria, particularly for olive oil and wheat.

The first exhibition of olive products in Syria /Lalib was held.

WATAN's Aid Expo was launched in Istanbul.

2019

■ Innovate for Humanity/ Youth and Education

WATAN annual convention is held in Gaziantep with a theme of Innovation for Humanity. We explicitly add Innovation to our global messaging and advocated for more innovation in the sector with specific solutions and clear methodologies.

We were now running more than 30 schools.

2020

■ Innovation in Action/ 2025 Roadmap

We established the Innovation Lab and implemented a new innovative shelter as part of the establishment of two camps, housing thousands of families. The 2025 roadmap was released. With COVID19, we re-adjusted our operating model demonstrating agility and innovation.



Board of Directors of WATAN



Moaz Al-Sibaai

Chairman

Founder of WATAN organization; 21 years experience in the private sector in Uk and Arab Gulf; volunteered in a number of non-profit organisations for 26 years.



Majed Salem

Board Member

Joined WATAN in 2014; 11 years experience in Marketing, Sales and Business development; 2 years experience in essential strategic development for start-ups; experience in being a founder, participant and consultant in Voluntary work.



Iman Ahmado

Board Member

One of WATAN founding members; 24 years work experience and 11 years experience in Voluntary work.



Fatema Obeid

Board Member

Joined WATAN in 2012; 9 years experience in Voluntary work.



AbdulRahman Alhamdo

Board Member

One of WATAN founding members; 11 years experience in business enterepenurship in information technology; 6 years of volunteer work in vocational training networks and managing business start-up initiatives.



Hikmat Walid

Board Member

Joined WATAN in 2015; 15 years experience in Network and Communication Technology in the UK and in the Gulf; a volunteer in a number of non-profit organisations for 8 years.

Role in Syria



Early Recovery

Early Recovery aims to contain and control the fire before it spreads and causes more harm by focusing on three main routes of action including rehabilitation to restore and recreate what has been destroyed as early as possible. Secondly, by supporting farmers in the sector of agriculture. Finally, we focus in the early stages of the calamity to raise funds via mini fundraising projects to quickly accumulate enough finances to partially recover from any disaster. These strategies help ease the suffering by ensuring it does not develop and expand by providing the necessary emergency care and finances needed when disaster strikes.

Education & Youth

The conflict did not only end lives and destroy homes but also dreams and hopes of a better future which WATAN aims to resuscitate by providing educational programs to the most vulnerable youth that helps them to develop life-skills and gives them an opportunity to face the challenges of life more effectively.

Social Harmony

Community centres and peace buildings aim to address the issues raised by the crisis-stricken societies, which provide platforms for discussion and peace building allowing new communities to gather to compensate for the ones lost in the conflict.

Economic Empowerment

WATAN largely depends on Economic Empowerment to compensate destroyed infrastructure and to deliver basic necessities to those displaced and harmed by the conflict. This strategy includes new market development, capacity building for skilled workers and business incubators. These strategies ensure security of finances in emergencies and new plans are tested to develop our finances and fundraising prospects.

Innovation

The Innovation strategy aims to to apply new approaches and adapt quickly to any crisis where WATAN depends on its different labs, for example the Physical Innovation Lab and the Innovation Lab Relief, to analyse and draw out new methods to tackle the challenges faced when providing relief and care to the vulnerable people struck by calamity.

Advocacy

WATAN employs its advocacy abilities and strategies in many cases for example when finding alternatives to tents for the refugees so they can endure the bitter cold winter and have better protection and privacy. Our campaigns are not restricted to relief work but we also advocate for the ending of violence in north-western Syria in global events by pressurising human rights agencies to respond and end the conflict.

Situation in Syria

WATAN's Response in the Time of COVID-19

The year 2020 will be remembered as the year of the COVID19- pandemic, a global health crisis that affected millions of lives around the world. But for the people of north and northwest Syria, already grappling with a protracted humanitarian crisis, the pandemic added a new layer of complexity to an already dire situation.

The conflict in Syria, which began in 2011, has led to the displacement of millions of people within the country and to neighboring countries. In north and northwest Syria, where fighting has been intense, over 2.7 million people are estimated to be in need of humanitarian assistance, including 1.4 million internally displaced people. The area is also home to many refugees who have fled the conflict in other parts of Syria.

In this context, the COVID19- pandemic posed an enormous challenge for humanitarian organizations operating in the region. The virus spread rapidly, and the healthcare system was already stretched thin by years of conflict. Humanitarian actors had to adapt quickly to respond to the pandemic while continuing to provide life-saving assistance to those in need.

The humanitarian response in north and northwest Syria during the pandemic was multifaceted. On the one hand, WATAN continued to provide essential services such as food, shelter, and healthcare to those in need. On the other hand, We had to quickly adapt to new challenges posed by the pandemic, such as the need for personal protective equipment (PPE) and infection control measures. In addition, WATAN had to address the socio-economic impact of the

pandemic, including job losses and increased food insecurity.

Despite the challenges, WATAN's response in north and northwest Syria during the pandemic was robust. All sectors quickly pivoted to address the new challenges posed by the pandemic. They distributed PPE to healthcare workers, established isolation centers for COVID19- patients, and provided training to healthcare workers on infection control measures. In addition, WATAN distributed food and hygiene kits to those in need.

However, funding remained a major challenge, and the pandemic created a new layer of uncertainty around funding. The pandemic led to a global economic slowdown, and donor funding for humanitarian projects decreased accordingly. This created a challenging environment for WATAN Foundation Projects in Syria, which had to continue to provide life-saving assistance while facing a funding shortfall, highlighting the need for sustained and predictable funding for humanitarian projects in Syria. The pandemic may have subsided, but the humanitarian crisis in Syria continues, and it is imperative that the international community continues to provide support to those in need.

In conclusion, the COVID19- pandemic posed an enormous challenge to the humanitarian response in north and northwest Syria. WATAN's response during the pandemic was multifaceted and included addressing the new challenges posed by the pandemic while continuing to provide life-saving assistance to those in need.

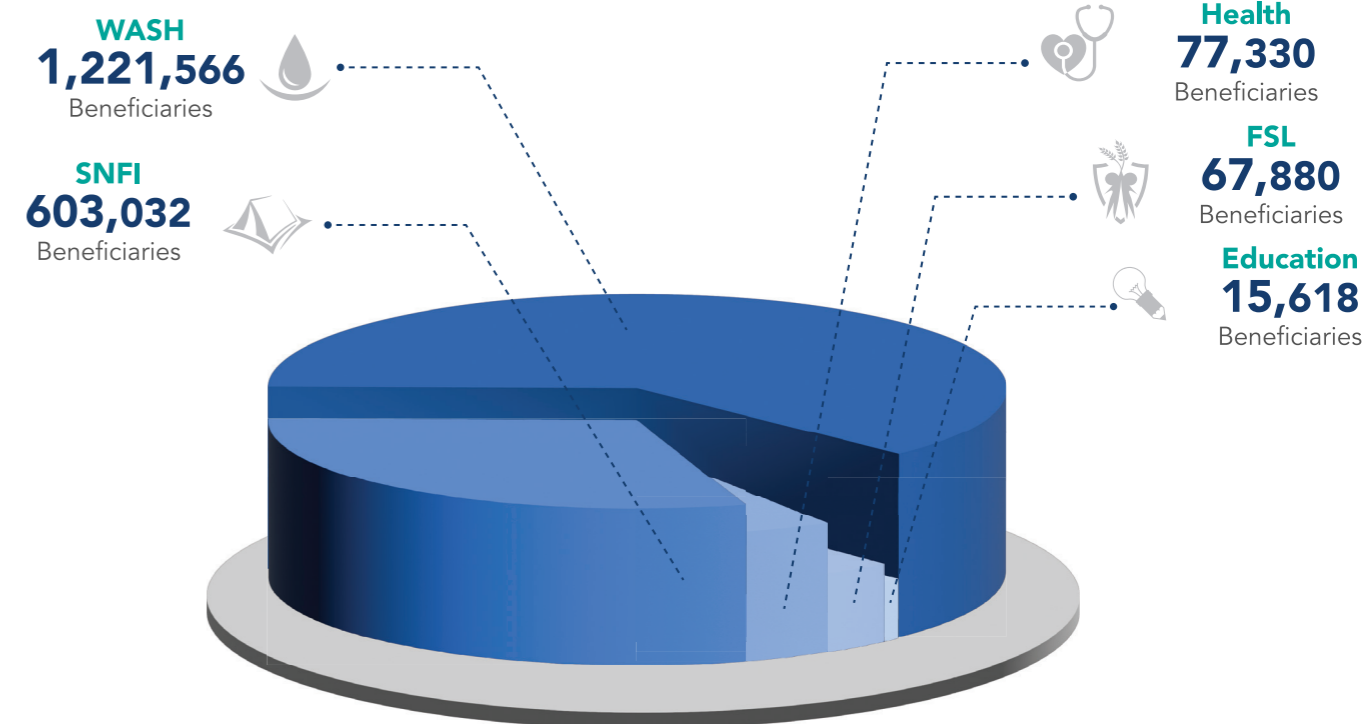




WATAN`s Programmes

YEAR IN REVIEW 2020

Through its Projects in Syria and Turkey in the Year 2020 WATAN was able to provide the following:



By 2020

1,985,426
Total number of beneficiaries



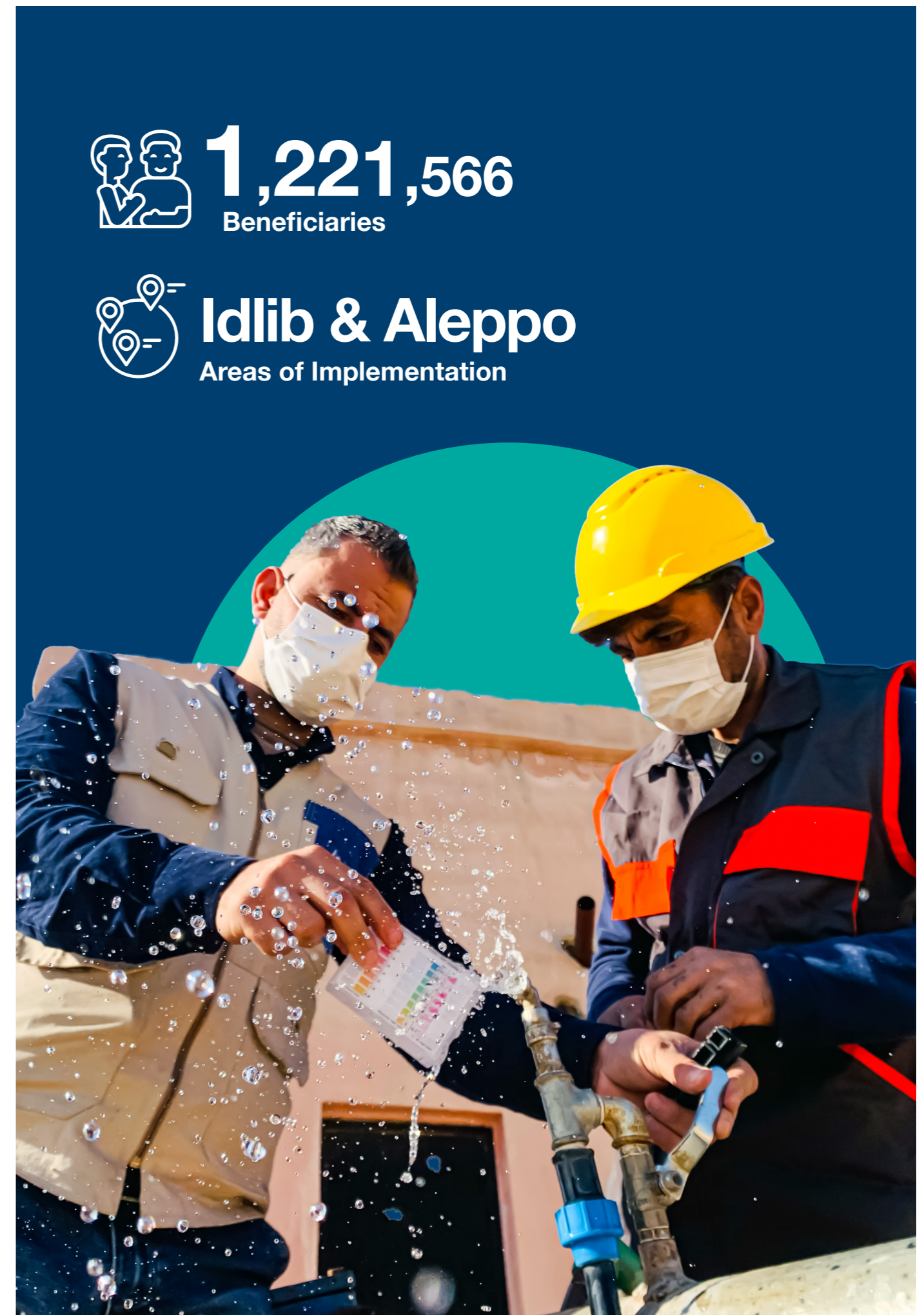
Water, Sanitisation, and Hygiene

The water, sanitation, and hygiene (WASH) situation in north and northwest Syria has reached a critical level, with internally displaced persons (IDP) camps facing significant challenges in accessing clean water and basic sanitation facilities.

The poor WASH conditions have put nearly 2 million people at risk of waterborne diseases, exacerbated by the COVID19- pandemic, making providing necessities to those living in the camps even more challenging.

In 2020, WATAN focused on improving the living conditions of communities in north-western Syria by providing and distributing necessary items while focusing on sustainable solutions and improving the lives of communities in north and northwest Syria.

- Providing chlorinated water through tanks to 57 camps in multiple towns.
- Distributing personal hygiene kits and garbage containers.
- Emptying and disposing of solid waste and contracting workers to clean toilet blocks daily.
- Maintaining and building public toilet blocks and facilities for people with disabilities.
- Distributing -1000liter water tanks to camps with joint activities.
- Implementing sewage lines with a fermentation tank, equipping water pumping stations and tanks, rehabilitating waste dumps, maintaining and expanding water networks, and maintaining sewage networks in seven towns and several camps.
- Equipping water stations with support for operating costs, providing water sanitation materials, and conducting COVID19- health awareness campaigns and insecticide spraying to prevent leishmaniasis.
- Maintaining public facilities for schools and health centers and providing them with water tanks.
- Providing power systems and uninterrupted power supply units to health centers and refrigeration rooms in Idlib, the northern, and western countryside of Aleppo according to required capacities.
- Building rooms for electrical equipment within the centers, conducting training for health center technicians, and distributing maintenance equipment for health centers.



From Scarcity to Abundance: How Access to Water Transformed the Lives of Syrian Farmers



Access to water is a crucial issue for farmers in northwestern Syria, who rely entirely on agriculture to provide for their daily income and support their families. One such farmer, Jamil, from the town of Maarat Al-Numan, earns his living by growing vegetables on his inherited land. However, he faced a challenge in securing water for his crops after a season of drought and a spike in irrigation costs.

Jamil, who is 40 years old, explains that they rely on «Rakaya» rainwater, which is rainwater collected within the agricultural land. «This is a tradition that we inherited from our ancestors to provide irrigation for crops,» he says. Despite using rainwater as a substitute for groundwater, they faced a severe shortage of water, which forced them to travel to the nearby town of «Sardeen» - about 2 kilometers away from their town - to obtain irrigation water and meet the needs of the locals as the shortage of water affected their livelihoods.

WATAN responded to the needs of farmers and set up a water station in Maarat Al-Numan. In addition, the WATAN team ensured the provision of water supply lines within the town itself. This initiative alleviated the challenges faced by farmers in securing water for their crops and helped the locals sustain their livelihoods.

Jamil expressed his gratitude for WATAN's response to the needs of farmers, which has made it possible to secure water for their crops. «The difficulties in obtaining irrigation water are no longer a challenge,» he says. He further adds that the costs that were wasted in securing irrigation water are now being saved to meet other household needs.

WATAN established nine water stations in 2020, spread across towns such as Maarat Al-Numan, Kafr Naseh, Abin Samaan, and Babka, intending to ensure clean water and irrigation for crops. These stations have benefitted over 64,200 people.

The impact of WATAN's initiative has been significant, not only in terms of providing water security for farmers but also in supporting the local economy. The success of this project can be attributed to the organization's understanding of the context and needs of the community, as well as their effective response to these needs.

WATAN's efforts in establishing water stations have helped to improve the lives of thousands of people and ensure the sustainability of the local economy for vulnerable communities in crisis situations.

Health

Access to healthcare is a significant challenge for individuals in northern and northwestern Syria, especially for those in hard-to-reach areas due to conflict and other factors. COVID19- has made the situation even more critical, exacerbating the already fragile health system and increasing the need for assistance.

WATAN has been working tirelessly to ensure that those in need receive medical care and supplies required to alleviate the burden of the pandemic. However, there is an urgent need for a comprehensive approach to address the complex health needs in the region, including improving access to healthcare, providing essential supplies and equipment, and increasing awareness about infection prevention and control measures.

WATAN has made progress in addressing health needs, including the establishment of mobile clinics, isolation centers, and the delivery of supplies to remote areas. However, more work is needed to ensure equal access to healthcare services without discrimination.

- PCR examination of suspected patients, isolation of infected patients, provision of medical care for coronavirus patients, and oxygen support.
- Continued support for WATAN Center 1 for primary care in the city of Talil al-Sham - Azaz, WATAN Center 2 in the city of Marea to provide blood bank and laboratory services and operate an oxygen concentrator, WATAN Center 3 to provide services through the thalassemia clinic, blood bank and laboratory in the city of Idlib.
- Providing medical consultations for patients, providing the necessary treatment in the dental clinic, providing reproductive health services for women, medical services for children and following up on cases of malnutrition, and providing the necessary free medicines, as a result of medical analyzes.



77,330

Beneficiaries



Idlib & Aleppo

Areas of Implementation



From Tragedy to Triumph: **One Woman's Journey to Manage Hypertension in a Refugee Camp**



Mrs. Badria, a resilient 50-year-old woman, was displaced from the city of Aleppo due to the ongoing conflict in Syria. She currently resides in Shamarekh camp, where she faces numerous challenges daily. The loss of her husband due to bombing by warplanes has left her to care for her three children, one of whom has a mental disability. Despite the many obstacles she faces, Badria is determined to persevere and provide for her family.

Recently, Badria started experiencing episodes of epigastric pain and intermittent headaches, particularly when hungry. Concerned for her well-being, she sought medical attention at the local clinic. After a thorough evaluation, the healthcare team conducted necessary laboratory investigations and monitored her blood pressure for a week. It was then that they diagnosed her with arterial hypertension.

The healthcare team provided Badria with the appropriate treatments and medical advice to modify her lifestyle to reduce the progression of her condition and improve her symptoms. They also advised her on ways to maintain a healthy lifestyle and control her blood pressure, which included reducing her intake of salt and incorporating exercise into her daily routine.

Despite the challenges of living in a refugee camp, Badria was determined to follow through

with her treatment plan. With the help of the clinic staff, she was able to maintain regular follow-up appointments, where her blood pressure was monitored and adjustments were made to her treatment as needed.

On her last visit to the clinic, Badria expressed her gratitude and happiness to be rid of the pain that had plagued her for so long. She was overjoyed to be able to focus on providing for her family without the constant burden of physical pain.

The healthcare team at the clinic was able to provide Mrs. Badria with the necessary care and support to manage her hypertension and improve her quality of life. This is just one example of the impact that healthcare providers can have on the lives of refugees and displaced individuals, particularly those with chronic conditions that require ongoing medical care.

As a humanitarian organization, it is important to recognize the critical role that healthcare plays in providing support to those affected by conflict and displacement. We remain committed to working with our partners and supporters to ensure that individuals like Mrs. Badria have access to the care they need to thrive in even the most challenging circumstances.

Shelter and Non-Food Items (SNFI)

Shelter and Non-Food Items Sector Situation in North and Northwest Syria:

The Shelter and NFI sector in north and northwest Syria faced significant challenges in 2020 due to the ongoing conflict and the COVID19- pandemic.

As of December 2020, an estimated 6.7 million people in Syria were in need of shelter and NFI assistance, including 2.7 million people who were displaced. The majority of displaced persons live in overcrowded and unsafe conditions in camps, collective shelters, and host communities. In addition, the harsh winter conditions in Syria made the need for shelter and NFI assistance even more critical.

Despite the challenges posed by the pandemic, WATAN continued to provide assistance in the Shelter and NFI sector in north and northwest Syria during 2020. including emergency shelter, essential household items, and winterization support for affected populations.

- Maintaining 550 apartments, repairing sanitary facilities, transferring displaced persons from camps to urban areas, and graveling for 14,200 tents in 86 camps.
- Helped the most vulnerable through the harsher Winter, by installing 3,650 better alternatives to the traditional tents, over gravel land.
- 354,412 people were provided with lifesaving, essential non-food items, targeting the most vulnerable groups.

603,032
Beneficiaries

Idlib & Aleppo
Areas of Implementation

The infographic features a dark blue background with a large teal circle. Below the text, a photograph shows three WATAN staff members in winter jackets with the organization's logo on the back, working at a tent site. One staff member is kneeling, another is standing, and a third is partially visible. The tents are white and set up on a grassy area.



Amidst Syrian Displacement Um Yahya's Journey of Survival and Hope

Um Yahya's journey of displacement has been filled with pain and loss. Over the past few years, she has been forced to move more than four times due to the ongoing conflict in Syria. Each time, she and her family of seven have had to leave everything behind and start over again. But despite all the hardships they have faced, Um Yahya has found hope in support of WATAN.

When she first arrived in Afrin, Um Yahya found herself living in a semi-abandoned house that lacked basic necessities for survival. She held back tears for the loss of her children and husband, who were killed during the siege in eastern Ghouta. But despite her grief, she was determined to provide a better life for her surviving children. With the help of WATAN, she was able to do just that.

«We were provided with blankets, insulation, and sponges by the WATAN, which we were in dire need of, as we don't have anything in our current residence,» Um Yahya explains. «It made a huge difference in our daily lives. My children were able to sleep more comfortably,

and we were able to stay warm during the cold winter nights.»

In addition to providing them with basic necessities, WATAN helped Um Yahya's son, Yahya, continue his education. «I registered my son Yahya in Salah al-Din school in Afrin city to continue his education, and he is now in the fifth grade,» she says. «It's important to me that my children have a chance to learn and succeed, even during all the challenges we face.»

But perhaps most importantly, WATAN gave Um Yahya hope for the future. «Before, I felt like there was no way out, no way to improve our situation,» she says. «But now, I feel like there's a chance for us to have a better life. With the support of WATAN, I know that we can overcome the challenges we face and build a brighter future for ourselves and our children.»

Um Yahya's story is just one of many examples of the impact that WATAN has had on the lives of displaced Syrians. Through their support, families like hers can find hope and build a better future for themselves and their communities. We can truly make a difference in the lives of those affected by conflict and displacement.

Food Security and Livelihood (FSL)

The conflict in Syria has disrupted agricultural production and destroyed critical infrastructure, leading to food shortages and soaring prices.

In addition, the COVID19- pandemic has further exacerbated the situation by limiting people's ability to work and earn a living, increasing food prices, and disrupting food supply chains.

According to the 2020 Humanitarian Needs Overview for Syria, 9.3 million people in the country are food insecure, with the highest numbers in the north and northwest regions. The report also notes that the COVID19- pandemic has disrupted local and regional food systems, leading to food price increases and reducing people's purchasing power.

In the north and northwest regions of Syria, where a significant number of people are internally displaced or living in refugee camps, access to food is limited.

The food security and livelihood situation in north and northwest Syria is dire, with millions of people facing food insecurity due to conflict and the COVID19- pandemic.

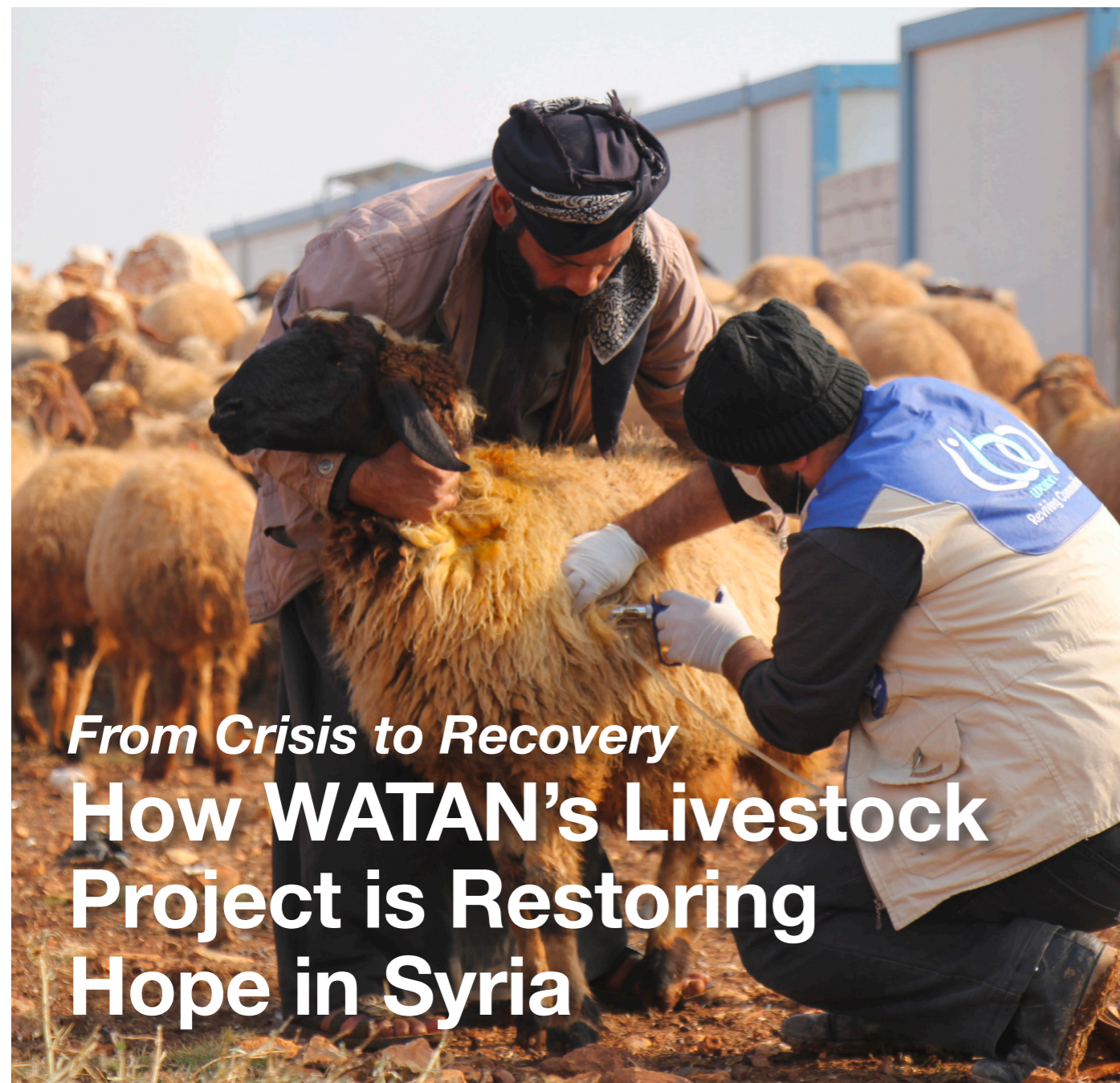
WATAN has been working to address the food security and livelihood crisis in north and northwest Syria and implemented a range of programs and initiatives aimed at improving agricultural production, increasing access to food, and supporting livelihoods that have been providing food assistance to vulnerable populations, however, the situation remains challenging, and more support is needed to ensure that people have access to food and can earn a living in these difficult circumstances.

- Rehabilitation of a hall and provision of tools and equipment in a sheltering center with 3,200 beneficiaries
- Establishment of a field kitchen and provision of ready-to-eat meals.
- Distribution of 400 ready-to-eat food baskets along with Covid19- hygiene baskets to 400 families for a three-month period.
- Vaccination of 10,000 dairy cows against foot-and-mouth disease and LSD, and 584,000 sheep and goats against sheep and goat pox
- Training of 61 local veterinary service providers and community animal health workers
- Support for the formation of 400 sets of feed mills, including animal feed training, and distribution of 400 sets of feed mills.
- Distribution of 1,811 portions of fresh lamb meat to 1,811 needy families (averaging 2 kg per family, benefiting approximately 9,055 individuals) during Eid al-Adha
- Distribution of meals to displaced individuals, including ready-to-eat baskets, food baskets, and free bread, benefiting 15,082 beneficiaries in 113 camps.

67,880
Beneficiaries

Idlib & Aleppo
Areas of Implementation

The infographic features a dark blue background with white icons. The top icon shows two people, representing beneficiaries. The middle icon shows a map with location pins, representing implementation areas. Below the text is a circular inset photograph showing two men in a field. One man, wearing a dark jacket and a face mask, is pouring red feed from a white sack into a metal feed mill. The other man, wearing a light-colored hat and a blue and white vest with the WATAN logo, is operating the mill. The WATAN logo on the vest reads 'WATAN Reviving Communities'.



From Crisis to Recovery How WATAN's Livestock Project is Restoring Hope in Syria

In war-torn Syria, the conflict has taken a heavy toll on the livelihoods of vulnerable communities, including livestock breeders in the north and northwest regions. Despite facing immense challenges, WATAN's Food Security and Livelihoods Program has been working tirelessly to protect the livelihoods and ensure the food security of these livestock breeders. Through their emergency veterinary services, distribution of feed and water, and support for sustainable livelihoods, WATAN has made a tangible impact on the lives of thousands of livestock breeders in the region.

The livestock sector in north and northwest Syria has been severely affected by the conflict, resulting in displacement, damage to infrastructure, and disruption of markets and supply chains. Livestock breeders, who rely on their animals for their livelihoods and food security, have been left struggling to cope with the harsh realities of war. In addition, the prevalence of livestock diseases, such as Newcastle disease, foot-and-mouth disease, brucellosis, and sheep and goat pox, has further exacerbated the situation, posing a threat to the health and productivity of the animals and the livelihoods of the breeders.

Amidst these challenges, WATAN's Food Security and Livelihoods Program has been at the forefront of providing essential support to protect the livelihoods and food security of livestock breeders in north and northwest Syria. One of their key initiatives was a campaign to vaccinate cows against nodular skin disease and immunize sheep against enterotoxemia, while also treating them against external parasites. The project aimed to provide emergency veterinary services and training to local veterinary service providers and community animal health workers.

WATAN's project had a significant impact on the ground. Over 10,000 dairy cows were vaccinated against foot-and-mouth disease and LSD, and 584,000 sheep and goats were immunized against sheep and goat pox. In addition, 61 local veterinary service providers and community animal health workers were trained, empowering them to provide essential veterinary services to livestock breeders in the region. This not only helped protect the health and well-being of the animals but also safeguarded the livelihoods of the breeders, who heavily rely on the productivity of their livestock.

Beyond emergency response, WATAN's Food Security and Livelihoods Program also implemented longer-term interventions to strengthen the resilience of livestock breeders in the region. This included rehabilitating livestock infrastructure, improving access to veterinary services, and providing training on livestock management practices. By addressing both the immediate needs and long-term challenges, WATAN has been making a sustainable impact on the lives of livestock breeders in north and northwest Syria.

Despite the progress made, the humanitarian context in Syria remains complex and challenging. Ongoing conflict, economic difficulties, and limited resources continue to pose obstacles to the sustainability of livestock breeders' livelihoods and food security. However, WATAN remains committed to its mission and continues to work tirelessly to protect the livelihoods and food security of livestock breeders in north and northwest Syria. With ongoing support from donors, supporters, and international organizations, WATAN's Food Security and Livelihoods Program aims to make a lasting impact and create a brighter future for livestock breeders in Syria.

In a region plagued by conflict and uncertainty, WATAN's Food Security and Livelihoods Program has been a beacon of hope for livestock breeders in north and northwest Syria. Through their emergency veterinary services, distribution of feed and water

Education

The education sector in North and Northwest Syria has been greatly affected by the ongoing conflict and the COVID-19 pandemic.

According to UNICEF, as of 2020, there were approximately 2.5 million school-aged children in Syria, with over 1.6 million in need of education assistance. The conflict has damaged or destroyed many schools, leaving students with limited access to a safe and reliable education. Moreover, the COVID19- pandemic has further exacerbated the situation, leading to school closures and disrupting education services.

The pandemic has created several challenges in the education sector in Syria. Firstly, the closure of schools has led to the disruption of education services and affected the learning of millions of students. Secondly, many schools lack access to basic facilities like clean water, hygiene facilities, and personal protective equipment, essential to prevent COVID19-. Lastly, the pandemic has also affected the mental health and well-being of students and teachers.

WATAN has responded to the education crisis in Syria during the COVID19- pandemic to ensure continued access to education for children in Syria, even in the midst of the pandemic, as well as provided essential supplies like soap, hand sanitizers, hygiene kits to schools and awareness campaigns.

- Increase safe and equitable access to formal and non-formal education for 2345 affected children and young students (17-5) years.
- 600 children (17-6 years) have access to education.
- 600 children (12-6 years) access psychosocial support.
- 1518 children (8-3 years) have direct access to five friendly spaces for children in Aleppo and Idlib governorates, promoting play-based learning.
- Five centers integrate educational and health services.
- Capacity-building training was provided to 22 educators on early childhood development (ECD) programming for caregivers and children in 5 educational and health centers.
- 4166 caregivers are informed about their role in creating a protective environment for children's ECD.
- Children (8-3 years) are enrolled in planned sessions with quality early learning activities.
- Marginalized mothers and persons with disabilities (PWD) are targeted with household visits to deliver ECD messages and raise awareness.





Breaking Barriers: Rahma's Journey towards Inclusion and Empowerment

Rahma's dream of leading a normal life, walking, and playing has been hindered by the effects of war, displacement, and disability. Being in a wheelchair and attending school brought about feelings of inadequacy and psychological distress. «We fled our village of Kafr Zeita in the Hama countryside four years ago due to warplane bombings. We moved to several places until we finally settled here in the Nahda camp in Deir Hassan, Idlib,» Rahma explained.

Initially, Rahma struggled with her disability and felt embarrassed to attend school. «I started school at Al nahda in fifth grade. I didn't enjoy going to school, playing, participating in activities, or interacting with others during lessons because of the embarrassment that came with my disability.» However, Rahma's life took a turn when WATAN intervened to support her integration with other students and ensure she was able to live as normally as possible.

Rahma's brother noted, «Initially, she struggled with shyness and felt isolated due to her disability, which she has had since birth. We noticed this at home, and the teachers informed us about it. Thanks to the teachers' support, her school friends, and WATAN's assistance, she overcame her condition and became more sociable. Her love and attachment to school grew stronger.»

Psychological counselor Fatima Al Ali explained, «Rahma possesses strong willpower and determination to succeed. At the beginning of the academic year, she used to miss school a lot due to embarrassment and shyness, needing encouragement. But with psychological support activities, the help of teachers, her friends, and home visits, she quickly changed. The result was satisfactory, and she excelled at the end of the year.»

Rahma's transformation was apparent, «After a while, I began to interact and participate because I felt that all the teachers loved me and supported me. I love school and want to stay to complete my studies.» Her future plans include becoming a teacher to help and support students like her with special needs.

Mr. Mahmoud Janid praised Rahma, saying, «This student is characterized by her diligence, perseverance, love of knowledge, and love for her teachers. She achieved first place this year. I wish her success and hope that she becomes one of the makers of the future.»

Abdullah Al Zror, the supervisor at Al Nahda School, expressed his appreciation for WATAN's role in improving education on both educational and psychological levels. «Through the support, it provided in the form of psychological support tools, lighting equipment, solar energy for the school, and school bags and stationery for the students, WATAN played a significant role in improving the school's educational and psychological environment.»

We express our gratitude to WATAN for their work's successful progress and contributions. We hope for their continued efforts in this regard. This inspiring story highlights the importance of psychological support, integration, and access to education, especially for children with disabilities affected by conflict and displacement.

CHALLENGES and SUCCESS



The year 2020 was marked by significant challenges for WATAN, as the COVID19- pandemic added an additional layer of complexity to an already dire humanitarian situation in Syria. Despite these challenges, WATAN was able to successfully adapt to the new realities of the pandemic and continue providing essential assistance to those in need.

One of the main challenges faced by WATAN in 2020 was the impact of the pandemic on the availability of resources, including funding, medical supplies, and personnel. The global economic slowdown and restrictions on movement and trade made it more difficult to procure and transport essential supplies to Syria. In addition, the pandemic created a new layer of uncertainty around funding, as donors became more cautious about committing resources to humanitarian projects in the midst of a global crisis.

Another major challenge was the need to adapt existing programs and services to the new realities of the pandemic. WATAN had to quickly pivot to address the new challenges posed by the pandemic, such as the need for personal protective equipment (PPE) and infection control measures. In addition, WATAN had to address the socio-economic impact of the pandemic, including job losses and increased food insecurity.

Despite these challenges, WATAN was able to achieve several significant successes in 2020. One of the main successes was the Water, Sanitization, and Hygiene (WASH) program, which aimed to improve the living conditions of communities in north-western Syria by providing and distributing necessary items while focusing on sustainable solutions and improving the lives of those living in internally displaced persons (IDP) camps. The program provided essential items such as hygiene kits, water tanks, and latrines to more than 1.2 million beneficiaries in the Idlib and Aleppo regions.

In addition, WATAN was able to continue providing essential services such as food, shelter, and healthcare to those in need, despite the challenges posed by the pandemic. The healthcare sector in particular played a crucial role in responding to the pandemic, with WATAN establishing isolation centers for COVID19- patients and providing training to healthcare workers on infection control measures.

Overall, while 2020 was a challenging year for WATAN, the organization was able to successfully adapt to the new realities of the pandemic and continue providing life-saving assistance to those in need. The successes achieved in the Water, Sanitization, and Hygiene program and healthcare sector demonstrate the organization's commitment to providing sustainable solutions to the humanitarian crisis in Syria, and the need for sustained and predictable funding to continue this work in the future.



Financial Report

Income

WATAN total income in 2020 is \$ 40 Million.

The income was received by different sources as the following:

- Institutional donors: \$ 1.5M compared to \$ 1.7M in 2019.
- International institutions: \$ 37.6M compared to \$ 15.9M in 2019.
- Other sources of income: individual donations and income from fundraising is \$ 499K compared to \$ 900K in 2019.

The Total income for aid and development interventions in Syria was \$ 38.6M, \$ 438K in UK and 522\$K in Turkey.

Total income in 2020

\$39,6
Million

\$38.6 M

For Displaced people in Syria

\$522 K

For the refugees in Turkey

\$438 K

For the refugees in UK

Expenditures

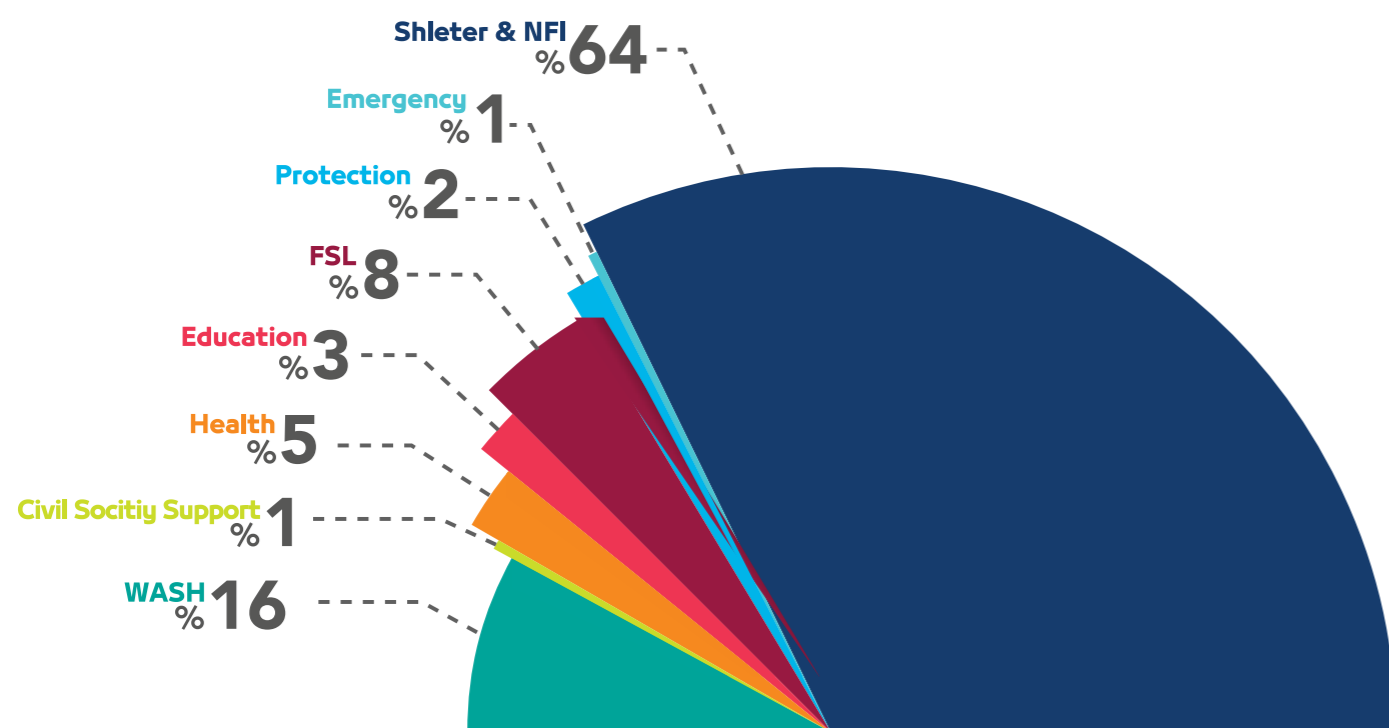


WATAN total expenditure in 2020 was \$ 40 M Which is more than 2019 by \$ 21.6M.

The expenditures were split into two main categories as the following:

- Operational expenditures: \$ 38M for the cost of direct implementation and related staff.
- Administrative expenditures: \$ 1.6M for the cost of running the organization and the indirect supervision of the program’s implementation.

The Structure of the Expenditures per Sector was as the following:



Unrestricted Income and Admin Share

As per WATAN expenditure for the year 2020, the percentage of operational expenditure is equal to %96 of the total expenditure while %4 was administrative cost.



Source and Nature of Fund

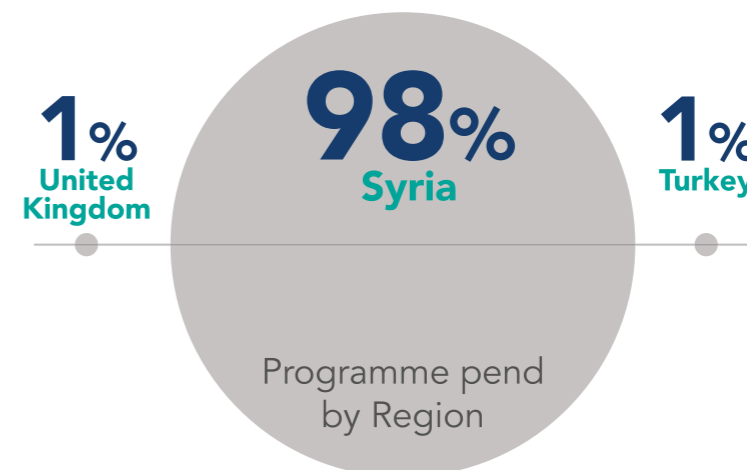
WATAN has spent \$ 39.1M of the total fund for the year 2020 from International Programs and \$ 499K from individual donations and fundraising events.

The fund represents \$ 33.3M aid and \$ 6.2M development as the following:



Fund Distribution by Region

The fund spent by WATAN came from \$ 38.6M in Syria, \$ 438K in United Kingdom and 522\$K in Turkey as the following:



ACCOUNTING PRINCIPLES OF THE ORGANIZATION

- Basis of Preparation

The financial statements have been prepared on an accrual basis of accounting with respect to income and on an accruals basis with respect to expenditure, in accordance with the accounting policies as set out below. These accounting policies are in accordance with the policies and guidelines of WATAN. However, in relation to the accounting treatment of the inventories, WATAN's Policy is to expense these immediately to the statement of financial activities at acquisition. This is deemed to be a more appropriate accounting treatment than the treatment normally afforded to such transactions in generally accepted accounting principles (GAAP), which would require these transactions to be recorded as assets subject to annual accounting charges as these assets are utilized or consumed. These policies are in line with the normal accounting policies applied by International Non-Government Organizations (NGOs), which are observed due to their working environment.

- Fund Accounting Policy

Restricted funds are those donated for use in a particular area or for specific purposes, the use of which is restricted to that area or purpose. Restricted revenue is generated from the projects whose terms are specified with the Donor before the implementation starts. These types of contracts mainly include type and scope of work, implementation duration, expense type and contract value. Restricted revenue is generated as the same amount as the expenses charged on the Project.

Unrestricted income funds are general funds that are available for use at the trustees' discretion in furtherance of the objectives of the charity.

- Incoming Resources

The principal accounting policies adopted is revenue recognition revenue is recognized under the percentage of completion method which allocates the expenses to the donors based on approved financial reports.

Voluntary income including donations and grants that provide core funding or are of a general nature is recognized where there is entitlement, certainty of receipt and the amount can be measured with sufficient reliability.

Income from charitable activities includes income recognized as earned (as the related goods or services are provided) under contract.

- Resources Expended

Liabilities are recognized as soon as there is a legal or constructive obligation committing the charity to the expenditure. All expenditure is accounted for on an accruals basis and has been classified under headings that aggregate all costs related to the category.

Costs of generating funds are the costs associated with attracting voluntary income.

Charitable expenditure comprises those costs incurred by the charity in the delivery of its activities and services for its beneficiaries. It includes both costs that can be allocated directly to such activities and those costs of an indirect nature necessary to support them.

- Admin Support Costs

Support costs include central functions and have been allocated to activity cost categories on a basis consistent with the use of resources, for example, allocating property costs by floor areas, or per capita, staff costs by the time spent and other costs by their usage.



With your support We continue to succeed



WATANFoundation
www.**WATAN**.foundation

