

Annual Report 2019





Contents

Word from the WATAN President	6
About WATAN	8
Board of Directors of WATAN	12
Role in Syria	14
WATAN's Programmes	16
WATAN's Participation in International Forums	46
Challenges and Success	48
The financial Report	49
Special Thanks	54





Word from the WATAN President

WATAN was established 8 years ago and since then, with each passing year, our team has been able to overcome challenges and difficulties which arise. When evaluating success, for us it has been about our ability to make a profound positive impact for the targeted societies and increasing the amount of experience and knowledge within the area.

With the increasing needs and the decrease in support, we had to accelerate the development of a more flexible process, to keep up with the pace of all the various changes. This includes finding smart solutions that harness technical developments and the latest innovation, and for this WATAN focused its efforts on innovation in humanitarian and development projects.

By making use of the relevant experiences in this field around the world we have launched a project during the annual conference for WATAN for the Innovation Lab for humanitarian projects.

The WATAN conference continues as an annual event that plays a major role in supporting and empowering many community organizations and advocating for the needs of civil society institutions operating in the region and taking the lead in its initiatives. This year, the conference took the leading role in advocating creativity and also the importance of training humanitarian workers to reduce and prevent sexual exploitation and abuse and did this under the supervision of a United Nations agency.

All of this was part of WATAN's emergency response and the active role WATAN presented in the face of the huge numbers of those displaced in northern Syria in 2019. It ensures shelter, with provision of service and healthcare facilities for the displaced. This is especially important because their suffering was not only due to the targeting of their areas of residence, but also due to the weather and torrential conditions that accompanied a severe winter. The organisation also focused on supporting the education sector, which is also affected by the displacement movement which has caused an overload of capacity in available schools of the area that people have been displaced to.

Several early recovery projects have also been implemented in border areas that are relatively safe to secure the reasons for stability and to push the economy forward through economic empowerment projects for those affected from the residents and people that have been displaced.

Our achievements were not limited to projects inside Syria as serving refugees in neighbouring countries is one of the main goals of WATAN. We paid special attention and care to community centers in Turkey to support refugees psychologically and to also enhance harmony within the communities hosting the refugees.

WATAN has managed to provide its services to more than two million and three hundred thousand beneficiaries whilst adhering to international humanitarian standards in the eight sectors that it has worked in so far.

We should also remember that our role was not limited to only responding to the disaster. Through advocacy, we are working to address the roots of the crisis. WATAN has participated actively in initiatives related to a solution to the crisis and the ending of humanitarian violations.

We look forward to greater and more creative achievements in the coming year. We also thank all our donors and their partners in international and global organizations for sharing our passion and ambition to build people and revive societies. We will remain committed to continuous development, innovation, and creativity which is the path to producing solutions that serve humanity and build a better future for future generations.

Chairman
Moaz Al-Sibaai



Who We Are

WATAN is a leading Civil Society Organization delivering emergency relief, third sector support and long-term international development projects. WATAN is committed to helping people and reviving communities. WATAN is independent, non-governmental, apolitical and nonsectarian organization.

We operate several integrated programs with the aim of addressing humanitarian emergency response and sustainable community revival through holistic and transformative approach.

We believe in the role of Civil Society in the various phases of intervention. Thus, we invest in supporting and developing Civil Society in our areas of reach. We also create platforms for coordination and integration to maximize impact on communities served.

To achieve our goal, we seek to be the preferred partner for international agencies in areas of specialization and reach.

WATAN was established in 2012 as a framework merging number of organizations and groups that had extensive community development work going back to 2006.

Mission

Our mission is to develop a sustainable, healthy and educated community, based on inclusive society that positively engages, supports and improves the lives of each individual, regardless of their gender, faith or ethnicity. We deliver programs that rebuild lives and maintain community social cohesion by providing transformative programs in reliefs, post-conflict-peace-building, education, economic empowerment, advocacy and development of strong Civil Society.

Vision

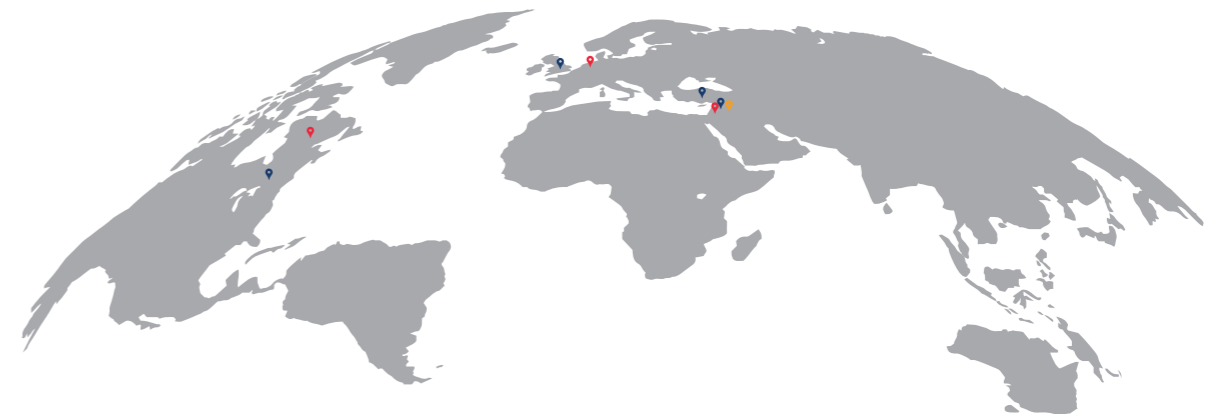
Free and dignified world based on tolerance, respect, and social justice.



Sustainability Framework



WATAN's offices around the world



Jordan - Germany - Canada
Offices under construction

Syria - Turkey - United Kingdom - United States
Active offices

Iraq
Licensed Offices Without external activity

Board of Directors of WATAN



Moaz Al-Sibaai

Chairman

Founder of WATAN organization; 21 years experience in the private sector in Uk and Arab Gulf; volunteered in a number of non-profit organisations for 26 years.



Majed Salem

Board Member

Joined WATAN in 2014; 11 years experience in Marketing, Sales and Business development; 2 years experience in essential strategic development for start-ups; experience in being a founder, participant and consultant in Voluntary work.



Iman Ahmado

Board Member

One of WATAN founding members; 24 years work experience and 11 years experience in Voluntary work.



Fatema Obeid

Board Member

Joined WATAN in 2012; 9 years experience in Voluntary work.



AbdulRahman Alhamdo

Board Member

One of WATAN founding members; 11 years experience in business enterepenurship in information technology; 6 years of volunteer work in vocational training networks and managing business start-up initiatives.



Hikmat Walid

Board Member

Joined WATAN in 2015; 15 years experience in Network and Communication Technology in the UK and in the Gulf; a volunteer in a number of non-profit organisations for 8 years.

Role in Syria

Early Recovery

Early Recovery aims to contain and control the fire before it spreads and causes more harm by focusing on three main routes of action including rehabilitation to restore and recreate what has been destroyed as early as possible. Secondly, by supporting farmers in the sector of agriculture. Finally, we focus in the early stages of the calamity to raise funds via mini fundraising projects to quickly accumulate enough finances to partially recover from any disaster. These strategies help ease the suffering by ensuring it does not develop and expand by providing the necessary emergency care and finances needed when disaster strikes.

Education & Youth

The conflict did not only end lives and destroy homes but also dreams and hopes of a better future which WATAN aims to resuscitate by providing educational programs to the most vulnerable youth that helps them to develop life-skills and gives them an opportunity to face the challenges of life more effectively.

Social Harmony

Community centres and peace buildings aim to address the issues raised by the crisis-stricken societies, which provide platforms for discussion and peace building allowing new communities to gather to compensate for the ones lost in the conflict.

Economic Empowerment

WATAN largely depends on Economic Empowerment to compensate destroyed infrastructure and to deliver basic necessities to those displaced and harmed by the conflict. This strategy includes new market development, capacity building for skilled workers and business incubators. These strategies ensure security of finances in emergencies and new plans are tested to develop our finances and fundraising prospects.

Innovation

The Innovation strategy aims to to apply new approaches and adapt quickly to any crisis where WATAN depends on its different labs, for example the Physical Innovation Lab and the Innovation Lab Relief, to analyse and draw out new methods to tackle the challenges faced when providing relief and care to the vulnerable people struck by calamity.

Advocacy

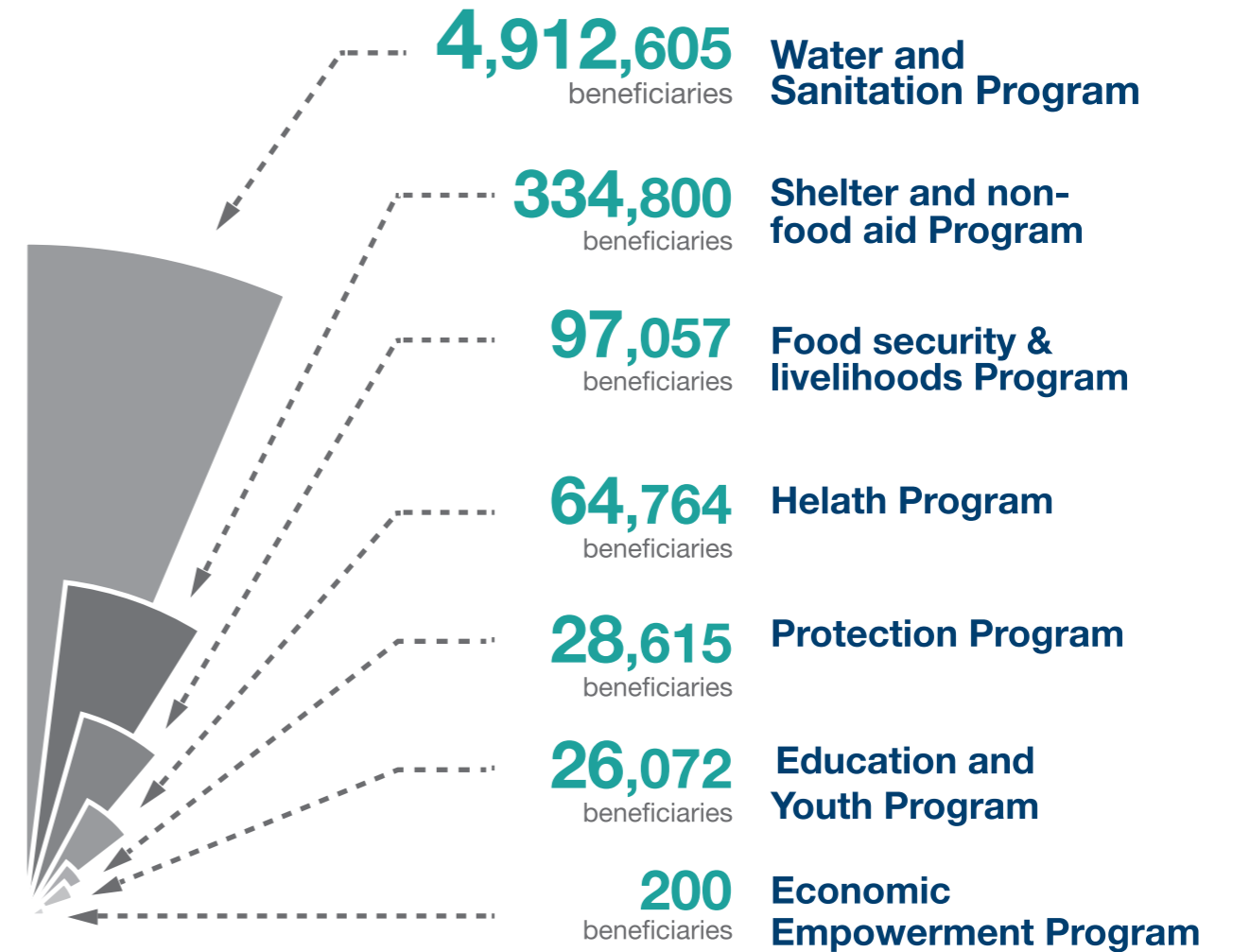
WATAN employs its advocacy abilities and strategies in many cases for example when finding alternatives to tents for the refugees so they can endure the bitter cold winter and have better protection and privacy. Our campaigns are not restricted to relief work but we also advocate for the ending of violence in north-western Syria in global events by pressurising human rights agencies to respond and end the conflict.



WATAN`s Programmes

2019 in numbers

Through its Projects in Syria and Turkey in the Year 2019 WATAN was able to provide the following:



By 2019

5,464,113
Total number of beneficiaries



Water and Sanitation



4,912,605
Beneficiaries

Idlib & Aleppo
Areas of Implementation

Within the Water and Sanitation programme we focus on creating a clean and sustainable living environment for families and individuals impacted by the conflict. We want the sustainability of our work to benefit generations to come. That is why, alongside ensuring access to clean and safe drinking water, we focused on setting up long-lasting infrastructures, which will continue to empower and benefit communities.

- Introduced solar power to support backup systems in
- 25 healthcare centers, reducing pollution and increasing potential working hours and the reliability of medical devices.
- Over 38,000 individuals, across 34 camps, were provided with hygiene facilities and clean and safe drinking water, meeting the set humanitarian Sphere Standards.
- Decreased the spread of disease and improved the hygiene standards across 30 camps, by providing regular waste management services.



**Working
to provide
a clean and
safe society
for all...**

Our mission to develop healthy and sustainable environments for those affected by conflicts includes the provision of integrated water, sanitation and hygiene (WASH) components in north-western Syria. In this way, WATAN is responding and alleviating the needs of the most vulnerable of those affected by displacement. Improving access to WASH services is proven to improve health, life expectancy and gender equality among other vital issues of social development. As well as being a leading factor for hunger, undernourishment and diseases, unsafe water is responsible for 1.2 million deaths annually worldwide. Therefore, preliminarily, the integrated WASH component works to reduce illness and death by improving sanitation and enhancing quality of life.

In 2019, we provided WASH services through water trucking, an alternative water source used in emergency situations where more sustainable, long-term sources cannot be found or will not provide the immediate support needed by the most vulnerable. Vitally, the water provided by water trucking

is chlorinated, killing bacteria and viruses and preventing the spread of life-threatening, waterborne diseases.

The impact of this programme has been life-changing for many of the most vulnerable, crisis-affected internally displaced persons. So far, at least 30,000 individuals have benefitted from WATAN's provision of integrated WASH components. 30,000 individuals now have access to adequate and safe drinking water as well as personal and domestic hygiene. We plan on working to expand our programme in order to distribute 25 litres of drinkable water per person, per day, therefore substantially increasing the quality of life for scores of people.

As well as providing safe, drinkable water, our programme also included other life - enhancing services. On top of distributing hygiene kits, we collected solid waste daily from the 15 camps which we worked with in north-western Syria before disposing the waste in landfills. This functioned to improve the environment of those internally displaced,

eradicating unattractive visual pollution as well as unpleasant smells. Not only does collecting waste improve these camps aesthetically, but it also frees space for tents and emotionally can alleviate the disposition of those who encounter such waste on a daily basis.

By distributing hundreds of garbage containers throughout the camps we are ensuring that the pleasant living environment we worked on, can resume in a sustainable way, ensuring the continuation of the benefits of clean and sanitized conditions.

This sanitation programme, with its wide-reaching and long-lasting benefits incorporates the dominant principles which WATAN stands for. This programme was driven by the aim to rebuild lives, giving displaced, vulnerable families a new lease for life. In conjunction with our other projects, we believe that we are making vital strides towards a more empowered, peaceful and healthy society for Syrians.

Shelter and non-food aid



334,800
Beneficiaries

Idlib & Aleppo
Areas of Implementation

Through the projects within the Shelter and Non-food Aid program, we strive to provide those who have been displaced with safe and comfortable shelter. We continue to offer both permanent and temporary shelters, be present in emergencies and continuously supply them with non-food items during their stay. Our priority is to protect the privacy and dignity of the displaced during these turbulent periods.

- Worked with the International Institute of Migration and addressed the need for both formal and informal camps to help the thousands of families making journeys across these areas.
- Helped the most vulnerable through the harsher Winter, by installing a better alternative to the traditional tents, some of which were made by those displaced, over gravel land.
- 300,000 people were provided with lifesaving, essential non-food items, targeting the most vulnerable groups.

Our priority is to protect privacy and dignity



WATAN's Shelter and non-food aid program aim to support those displaced by the conflict by providing permanent and temporary shelters, especially for the vulnerable in the harsh winter. By doing this in addition to providing lifesaving essential non-food items WATAN delivers some of the basic necessities for survival and helps protect the privacy and dignity of the displaced during these turbulent periods.

In 2019, WATAN in collaboration with the International Institute of Migration addressed the need for both formal and informal camps to help the thousands of families making journeys across the areas in north-western Syria.

These camps provide the displaced with temporary

protection to ease their tough and long journeys escaping the conflict back home.

During the unbearable and life-threatening winter, WATAN has sought to develop alternative shelters for those refugees who formerly relied on the traditional unstable tents which were ineffective against the cold winter storms. By using better quality materials and more stable structures for their shelters, that could withstand the tough blizzards, snow, and rain which is constantly experienced in some areas, it provided the refugees with adequate protection to survive the winter months.

The shelter program provided warmth in the bitter cold winter days and protection during the life-threatening climate in refugee camps. It also supplied the most

vulnerable with lifesaving essential non-food items including essential toiletries and baby supplies which overall improved their living conditions and social cohesion, making their tragic displacement a bit more bearable.

This program, which reached 334,800 internally displaced people in Idlib and Aleppo incorporates the dominant principles which WATAN stands for.

This program was driven by the aim to provide means for survival in the harsh winter and improve living conditions those the vulnerable families displaced due to the conflict. In conjunction with our other projects, we believe that we are making vital efforts towards a more empowered, peaceful, and healthy society for Syrians.

Food Security and Livelihood



97,057
Beneficiaries

Idlib & Aleppo
Areas of Implementation

Through this programme we want to ensure food security for each family, but also the resources and knowledge to provide for themselves and their communities.

This is why we focus on supporting the agricultural sector, by providing vaccinations, training farmers and vets, and extending value chains to ensure our work is sustainable and will continue to benefit communities for many years to come.

- Improved the income security of over 75,000 households by vaccinating over 2 million birds immunising them against the Newcastle Disease
- Distributed more than 2000 2kg packages of meat to families in need through the Qurbani Project
- Increased the income of 618 olive sector stakeholders, by assessing the needs of olive farmers and distributing equipment, and restoring infrastructure, accordingly, improving their productive capacity.



Syrian Olive Trees: The Challenges of Harvesting and Marketing

Each year in late October, the olive harvest season begins, much anticipated by the majority of residents of northern Syria. However, this season has seen many farmers delay their harvests for various reasons.

Rural residents of Idlib and Aleppo rely heavily on olives as their primary source of income, but climate and economic factors can lead to reduced production levels of both fruit and oil. Syrians are also among the highest consumers of olive oil, with a per capita consumption rate ranging from 5 to 6 liters per year.

Abu Ahmed, a resident of the town of Al-Kastan in the Jisr Al-Shughour countryside and owner of one of the olive fields, explains that the olive harvest date varies each year and is dependent on the amount of rain and the ripening of the olives. Most farmers wait for a decrease in the price of olive pressing within the presses. He added that the high cost of fuel in the area is another struggle, as most farmers use diesel generators to water their trees when there is a shortage of rainwater.

In 2018, the WATAN Foundation launched a project named «Supporting the Value Chain of the Olive Tree» within the areas of Jisr Al-Shughour and Darkush, as part of their food security program. The project aims to support small farmers in order to resume their fieldwork, provide appropriate care for

their production, and market the resulting harvest.

Abdul Hai Sarmeeni, the project coordinator, explains: «The project began with an evaluation phase of the olive groves, selecting them based on their needs and current ability to provide good services that can produce high-quality olive oil.» Sarmeeni added, «We provided support by offering equipment such as storage tanks, analysis tools, plastic baskets, electronic scales, fire extinguishers, and rehabilitating the infrastructure to reduce acidity levels in olive oil to obtain excellent virgin olive oil.»

Sarmeeni continues: «The project had an excellent impact on the targeted villages by providing training courses to increase farmers' experience in obtaining better production in terms of quantity and quality. We also employed more than 500 male and female workers through the cash-for-work program provided by the project.»

It's worth noting that the project provided its services to 500 beneficiaries, including farmers and owners of agricultural fields in the targeted areas.

Abu Ahmad was one of the beneficiaries of the project and he shared: «We were informed through local councils to register for the project to support olive farmers, and I was accepted because I met the required standards.» Abu Ahmad added: «We

were initially supported with spraying and combating the olive fruit fly, supported by foliar fertilizers, plowing the fields, as well as providing workers to harvest, transport, and press the crop for free. The trees were also pruned by specialized workers after the harvest stage, which saved us expenses for buying other household and school needs.»

The project has had a lasting impact on farmers by following the correct scientific agricultural methods for raising and treating olive trees through training courses by establishing 14 field schools and training and assisting 25 women in preparing and marketing table olives.

WATAN Foundation has made a significant contribution in supporting olive farmers over the past years, reaching the largest number of areas in northwest Syria, including northern rural Aleppo and western and northern rural Idlib. A special exhibition was launched in the city of Armenaz to market the products of olive farmers, such as olive oil, olives, berin, soap, and charcoal, aiming to connect producers with stakeholders and consumers.

Through its food security program, the WATAN Foundation aims to develop the achievements of its program towards activities that involve increasing skill levels and empowering local communities to acquire

Health



64,764
Beneficiaries

Idlib & Aleppo
Areas of Implementation

Our healthcare programme aims to serve even the hardest-to-reach patients. The conflict has left many in need of dire physical and mental health care. The programme fulfills this need by maximising the efficiency of existing infrastructures. For example, repairing war-ravaged emergency facilities and equipment, delivering supplies, and coordinating medical information sharing.

- 80% of Idlib and Maree's blood supply was fulfilled by our blood banks.
- Life-saving surgical operations were expanded, and disability in trauma patients was reduced, through the new departments built at Alamal hospital.
- 7,429 people accessed our primary health care services, which are essential to the quality of life.



**Serving
the most
vulnerable**

WATAN's health program focuses on society's most vulnerable people, aiming to build a stable and reliable health system in Syria. The opening of the first centre to treat thalassemia patients in Idlib does exactly that. Thalassemia is a blood disorder which causes the body to make an inadequate amount of haemoglobin. Such a serious health condition can have a significant impact on a person's life. Even if an individual has a mild case of the disorder, they still carry the risk of passing on a more serious type of thalassemia to their children. Without close monitoring and regular treatment which includes regular blood transfusions, the most severe disorders can cause serious organ damage, threatening the patient's life.

As a result, WATAN's first-of-its-kind treatment centre is an indispensable, life-changing addition to Idlib's

health response. The Kheir centre has so far treated more than 1200 patients since it opened and contains the necessary high-tech equipment needed to give thalassemia patients access to reliable and comfortable treatments. One of the most indispensable aspects of WATAN'S Kheir treatment centre is the central blood bank. Being the only blood bank in Idlib means that the city finally have the means to access the blood transfusions which are necessary and often life-saving for their treatment. In the past, severe thalassemia was often fatal by early adulthood. Now, with new, current treatments, people with the blood disorder are likely to live well into their 50s, 60s and even beyond. The existence of the Kheir treatment in Idlib means that patients can now avoid the unabating journey to the closest location which offers such treatments. Not

only does this eliminate travel expenses as well as the effort of travel but more importantly, it eliminates the need to travel through unpredictable and often dangerous, life-threatening areas. Now, patients in Idlib can access invaluable, life-saving treatment under the supervision of specialised physicians in their own city. After suffering through almost a decade of unrelenting instability in almost all aspects of life, the face of Syria's health response is slowly but surely changing. WATAN's focus on local-scale medical issues works to rebuild Syria from its core, ensuring that the most vulnerable and at-risk individuals are cared and accounted for. As a result, not only is WATAN working to reduce mortality and prevalence of potentially fatal diseases, but it is also working specifically to improve the effectiveness of such life-saving response

Protection



28,615
Beneficiaries

Ankara, Turkey
Areas of Implementation

Through this programme we focus on ensuring that the human rights of the Syrians are recognised and met. We work towards this by setting up sessions and to raise awareness and give legal advice and by also providing or directing the vulnerable to the protection services they need. We aim to create a safe and cohesive environment for the current and coming generations through the work that we do.

- Working with refugees to ensure the mental health support they need is available
- Working to provide ongoing support for thousands of children as integrate into their new environments
- Providing valuable information to vulnerable refugees in Turkey and directing them towards protection services



Our protection programme finds its basis in human rights. We aim to build and maintain a healthy society for future generations whereby every member of society is fully protected. In 2019, under the umbrella of the UN's annual global 16 Days of Activism against Gender-Based Violence, WATAN hosted its own campaign for Syrian refugees. The "Equality Generation Stands Against Rape" campaign which took place in the Ankara province of Turkey, encapsulates the precise aims of our protection programme. For us, this generation is the first stepping stone towards a fairer, more equal world, and our campaign served as an educating force in that direction.

The event was widely attended with around 350 participants, both men and women. The primary aim of our event was to motivate attendees to prevent the unfortunate widespread culture of discrimination that allows for the continuation of violence against women. Gender based violence is a monumental, daily threat to human rights and includes any harmful act directed at an individual on the

basis of their gender. Such violence is rooted in gender inequality, the abuse of power and harmful gender norms.

Our event focused specifically on rape, outlining the social, economic, health and psychological effects of such gender-based violence on an individual, their family and society. On a personal, psychological level alone, victims deal with very intense mental effects including emotional numbness, fear, shame, guilt, depression as well as recurrent dreams and nightmares. These consequences are not only devastating but can have life-long repercussions for survivors. Not only this, but these repercussions can be life threatening for the victim and therefore create many subsequent long-lasting effects for their family and community.

By raising awareness about these issues and motivating a discontinuation of such culture, WATAN is working to eradicate such devastating occurrences. It is estimated by the UN that one in three women will experience sexual or physical violence in their lifetime. Furthermore,

this threat increases significantly during displacement and times of crisis, making events such as the one hosted by WATAN vital in creating a fairer, more equal society in the future, especially for Syrian refugees.

In addition to raising awareness about rape and its repercussions, our event included information about the legalities of marriage and divorce in Turkey. This allows displaced individuals to establish their position in Turkish society, providing them with the tools to take control of their own lives, giving them the means to choose.

The "Equality Generation Stands Against Rape" event succeeded in providing necessary knowledge about gender-based violence, its effects and how to prevent it to the scores of attendees. Providing these tools are vital in creating a society which is fairer and in which more people receive all of their human rights.

Education and youth



26,072
Beneficiaries

Idlib & Aleppo
Areas of Implementation

The conflict has left many feeling unhopeful for the future and to ensure

Educating a generation empowers them to realise their potential instead of falling into the trap of radicalisation or poverty. And so, throughout this program we aim to nurture talent and encourage creativity across all ages. We do this by operating school and education services as well as supporting institutions and individuals through scholarship and funding.

- Supported Salah Al-Deen school by restoring the school building and installing solar panels. Watan also provided school supplies and the wages and training of teaching staff.
- Over 10,000 children, across 8 schools, received the psychological support needed due to the events they had experienced.
- We increased the capacity of 20 schools by paying the monthly wages of over 880 teachers.

I love my School



* Do you enjoy school?

- Yes. I love school and I consider it my second home. Before I started going to school, I would only spend time in the camp. And I hated it because it only has the things we sleep on. And my father would always be angry because he can't find work.

* Do you look forward to going to school?

- Of course. When people wearing the organisation's clothes came and told us they'll start a school, I was very happy. We'll finally be like normal children. It's a feeling I can't explain.

* What do you learn in school?

- Mathematics, Arabic, and English in addition to entertainment and support

* Tell me something you found interesting that you learnt?

- Arabic because I learnt how to read and write. A few days ago, we went to Al-dana city and I could read the signs.

* Did you make friends at school?

- Yes. Now I have multiple friends. I used to see them from a distance at the camp before but I got to know them at school.

* Do you enjoy seeing your friends?

- Of course I do. Before at the camp, my mother would be busy with my younger brother. I had no one to play with. Now that I made friends, we play together all the time

* What's the best memory you made in school?

- We had an open day. My friends and I played as a team and won second place.

* Do you think school is important?

-Yes. In school, we learnt how to read and write. They also give us activities. They are the best periods because we can play.

Saif AlDeen Sulaiman (4th grader at Hamza bin AbdulMutilib)

Economic Empowerment



200
Beneficiaries

Hatay, Turkey
Areas of Implementation

Through the economic empowerment programme we strive to train and teach individuals the skills necessary to enter the labour market and start their own projects. It is vital for sustainable growth, that we are able to enhance their integration into society and encourage them to positively and effectively contribute to benefitting it.

- Offered technical support and training to individuals which were in the process of or wanted to start a business
- Helped internally displaced people and refugees to adapt easily and integrate within their host communities
- Sponsored and connected individuals to job opportunities matching their skill set



Securing a reliable and dependable future

Empowering our beneficiaries in every aspect of life is a key part of WATAN's work. Economically we aim to give vulnerable individuals the tools they need to achieve a seamless transition into their new circumstances. In the Hatay province of Turkey, we launched the 'Future in My Hand' project for displaced Syrians. Suitably named, this project does exactly what it intends; to allow those whose recent past was forcibly taken from them, to take full control of their future. In this way, we are not only ensuring immediate improvements to quality of life through our other projects, but we're also securing a reliable and dependable future.

Through the 'Future in My Hand' project which launched in 2019, our 200 beneficiaries have gained and are still gaining the skills and capabilities to enter the labour market. This can take many forms whether that be through helping refugees find employment or aiding them in starting their own projects.

It is infamously difficult for refugees to enter the job market in the countries they

have been displaced to. Because of this, WATAN has made it their aim to empower vulnerable individuals economically, subsequently reducing poverty and increasing quality of life. Vitaly, entering the labour market will allow individuals to integrate into society in a coherent, supported manner. Adapting to new circumstances and environments after an especially trying period of life is undeniably difficult. WATAN focuses on reducing the stresses of this new start, allowing as easy a transition as possible and providing support at each step of the way.

Social cohesion, the way in which people in society are connected to each other, are integrated and share common values is key to a sense of community and support. Undeniably, this is vital for the displaced who have to find their place in unfamiliar territory. Aiding them by connecting them to job opportunities and therefore improving their current financial situation is one of the most important steps in the right direction to achieve social cohesion.

Not only will this provide financial aid, finding job opportunities or starting projects will give individuals a sense of purpose. Contributing in a positive and effective manner to society is a huge mental and emotional boost for these individuals. The devastation of their homeland paired both with their undoubtedly scarring experiences and distressing journey to Turkey is enough to allow a loss of motivation. A negative mental state is expected. Therefore, finding a job, transitioning smoothly into society and finding a purpose once again is crucial and can even be life-saving.

We are proud of what we have achieved so far in 2019 within our economic empowerment programme and we aim simply to widen our reach, aid a larger number of beneficiaries and continue to support the most vulnerable in every way, especially economically. In this way, we are securing a dependable future for the individual and their family.



WATAN's Participation in International Forums

UNLEASH 2019 – (Shenzhen, China)

Nov 5th to Nov 14th

The UNLEASH Global Innovation Lab gathers 1,000 talents from around the globe to collaborate on solutions, to help meet the United Nations Sustainable Development Goals. In 2019, the annual event took place in Shenzhen, China. WATAN participated...*

Having experience working on the ground in northern Syria, the (WATAN) team was able to recognise the shortage of relevant data, which described the current needs and living conditions of the population in northern Syria. The team worked on a data-driven solution, organising real-time key-data points and statistics, to help enable local NGOs to provide the most effective means of humanitarian aid and support.

As the role of technology continues to grow in many sectors, its vital we utilise it to help us, and other local NGOs, form more informed, data-driven decisions. These will ensure the distribution of scarce resources is efficient, effective, and will ultimately benefit more of the vulnerable people.

Global Refugee Forum in Geneva, Switzerland

16–18 December 2019

The first Global Refugee Forum took place in December 2019 in Geneva, Switzerland with the aim of transforming the way the world responds to refugee situations. It brought together refugees, heads of state and government, UN leaders, international institutions, development organizations, business leaders and civil society representatives, among others, at the Palais des Nations, the home of the United Nations Office at Geneva.

We were invited to speak about our work supporting the Olive Value Chain in Northern Syria, as part of the segment Market Place of Good Practices. Having worked in the field for the past 3 years, we were able to share our experience to benefit those working in similar scenarios all around the world.

Humanitarian Grand Challenge Canada HGCC, Munich – Germany

09–13 December 2019

The Humanitarian Grand Challenge and the World Food Programme's Innovation Acceleration Week took place this year in Munich, Germany. WATAN attended with a project, which innovatively solves the problem of power cuts in health facilities in Syria, with a product named battery-array. The project plan was refined through the help of innovation experts and was presented on Pitch Night to donors and other private stakeholders. Humanitarian Grand Challenge Canada recognised the reach and potential life changing benefits of this project and so awarded WATAN an innovation grant to help implement it.



SUCCESS AND CHALLENGES

The Year 2019 witnessed large waves of emigration from southern and eastern Idlib countryside – towards the areas near the Turkish border. This sudden and substantial increase in the number of refugees, which is estimated at 700 thousand people according to the United Nations has posed a huge challenge to the humanitarian sector.

The waves of collective migration posed a huge challenge to WATAN. Services needed to be provided for those recently displaced in addition to people that were previously in the Province of Idlib and in rural Aleppo. The biggest challenge faced was in besieged areas as a result of a shortage of working personnel. WATAN was able to train and build the capacity of new personnel to provide for the newly displaced people.

The huge efforts and fast coordination between the Program Managers, the Sponsors' Affairs Managers in the Foundation, and the supporting managers and their teams on the ground, WATAN was able to cover a substantial number of needs. This was through a rapid response in a record time frame, providing food, shelter, and health services to refugees.



Financial Report

Income

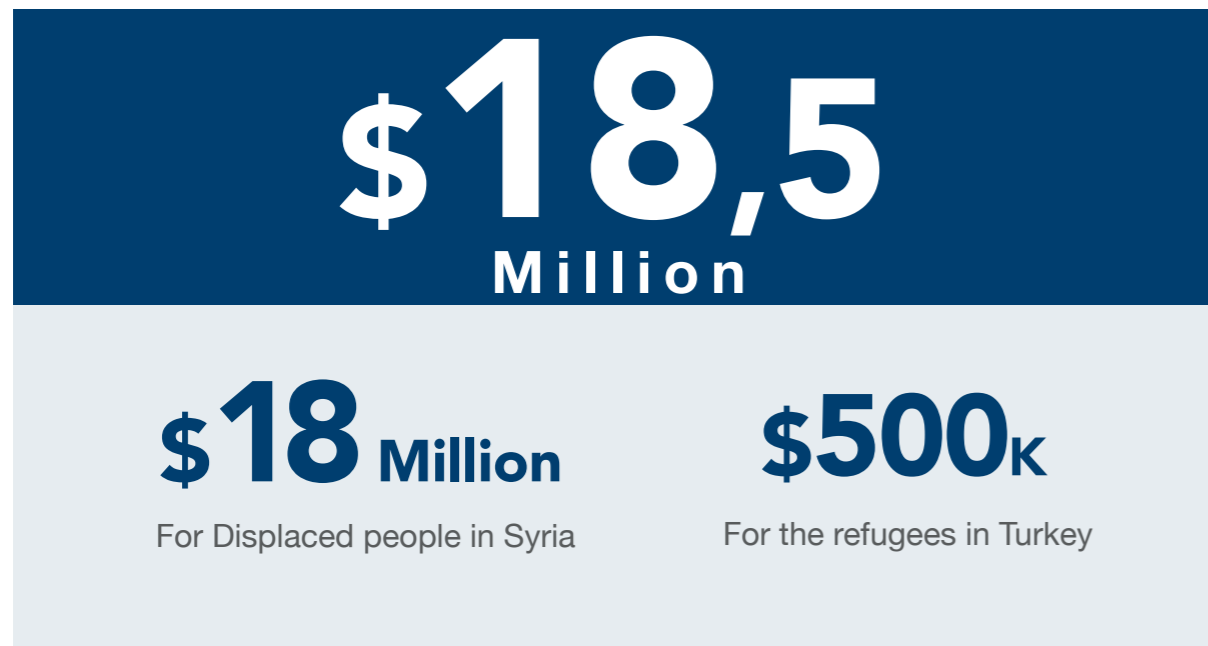
WATAN total income in 2019 is \$ 18.5 Million, which is less than 2018 income in \$ 1.1 Million due to the inaccessibility of the South of Syria areas.

The income was received by different sources as the following:

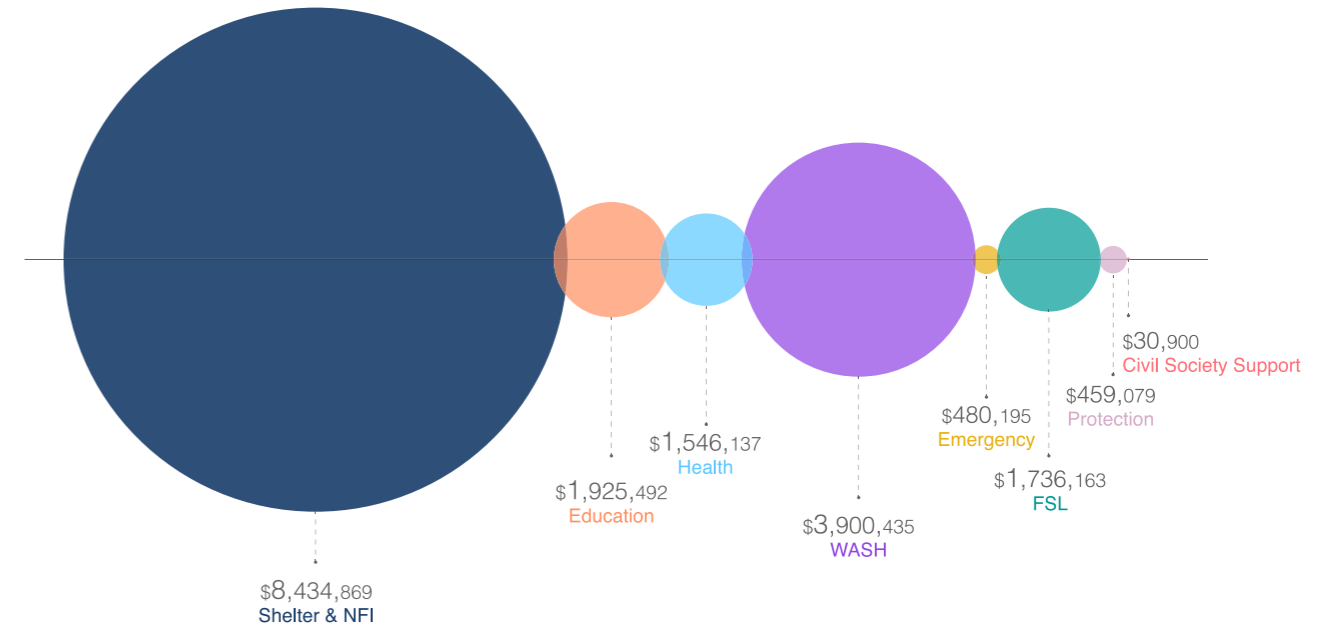
- Institutional donors: 1.7\$ Million a reduction of \$ 250 K in 2018.
- International institutions: \$ 15.9 million with a reduction of \$ 1.2 million in 2018.
- Other sources of income: including individual donations and income from fundraising is 900\$ K with an increase of 260\$ K in 2018.

The Total income was set for the aid and development for the Displaced people in Syria \$ 18 million and for the refugees in Turkey \$ 500K.

Total income in 2019



The Structure of the income received per Sector was as the following:



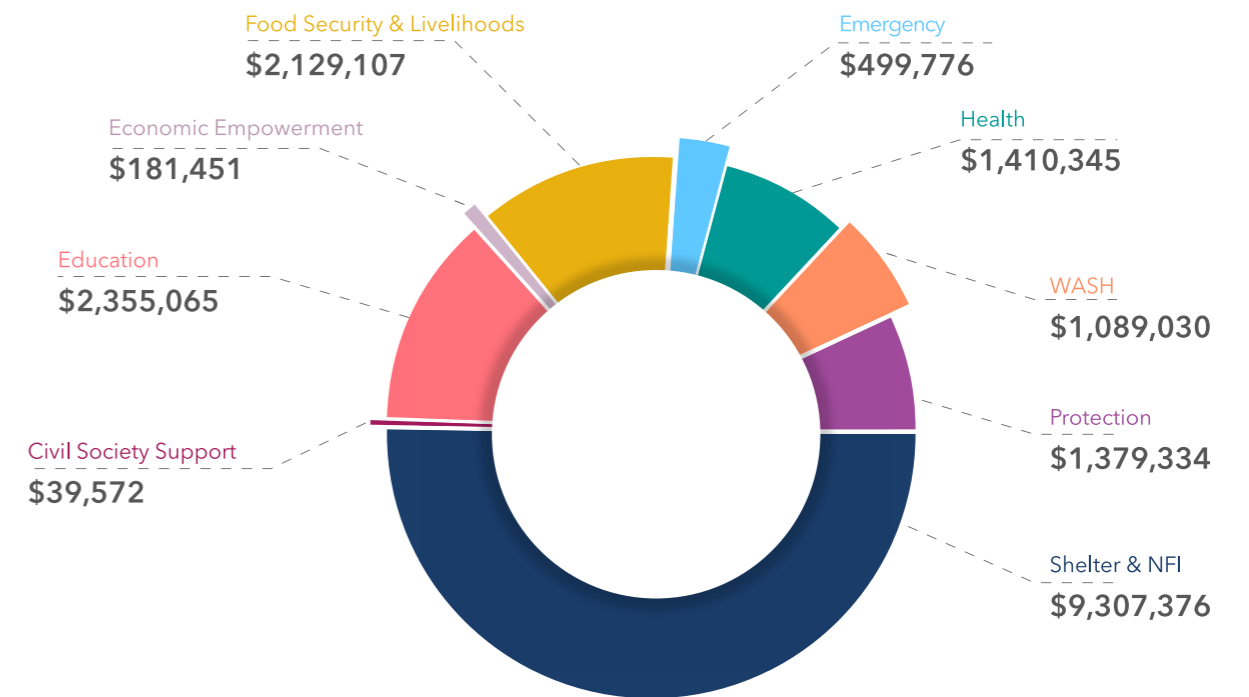
Expenditures

WATAN total expenditures in 2019 was 18.4\$ million Which is less than 2018 in \$ 1.5 million.

The expenditures were split into two main categories as the following:

- Operational expenditures: \$ 16.9 million for the cost of direct implementation and related staff.
- Administrative expenditures: \$ 1.5 million for the cost of running the organization and the indirect supervision of the programs implementation.

The Structure of the Expenditures per Sector was as the following:



ACCOUNTING PRINCIPLES OF THE ORGANIZATION

- Basis of Preparation

The financial statements have been prepared on an accrual basis of accounting with respect to income and on an accruals basis with respect to expenditure, in accordance with the accounting policies as set out below. These accounting policies are in accordance with the policies and guidelines of WATAN. However, in relation to the accounting treatment of the inventories, WATAN's Policy is to expense these immediately to the statement of financial activities at acquisition. This is deemed to be a more appropriate accounting treatment than the treatment normally afforded to such transactions in generally accepted accounting principles (GAAP), which would require these transactions to be recorded as assets subject to annual accounting charges as these assets are utilized or consumed. These policies are in line with the normal accounting policies applied by International Non-Government Organizations (NGOs), which are observed due to their working environment.

- Fund Accounting Policy

Restricted funds are those donated for use in a particular area or for specific purposes, the use of which is restricted to that area or purpose. Restricted revenue is generated from the projects whose terms are specified with the Donor before the implementation starts. These types of contracts mainly include type and scope of work, implementation duration, expense type and contract value. Restricted revenue is generated as the same amount as the expenses charged on the Project.

Unrestricted income funds are general funds that are available for use at the trustees' discretion in furtherance of the objectives of the charity.

- Incoming Resources

The principal accounting policies adopted is revenue recognition revenue is recognized under the percentage of completion method which allocates the expenses to the donors based on approved financial reports.

Voluntary income including donations and grants that provide core funding or are of a general nature is recognized where there is entitlement, certainty of receipt and the amount can be measured with sufficient reliability.

Income from charitable activities includes income recognized as earned (as the related goods or services are provided) under contract.

- Resources Expended

Liabilities are recognized as soon as there is a legal or constructive obligation committing the charity to the expenditure. All expenditure is accounted for on an accruals basis and has been classified under headings that aggregate all costs related to the category.

Costs of generating funds are the costs associated with attracting voluntary income.

Charitable expenditure comprises those costs incurred by the charity in the delivery of its activities and services for its beneficiaries. It includes both costs that can be allocated directly to such activities and those costs of an indirect nature necessary to support them.

- Admin Support Costs

Support costs include central functions and have been allocated to activity cost categories on a basis consistent with the use of resources, for example, allocating property costs by floor areas, or per capita, staff costs by the time spent and other costs by their usage.

EVENTS AFTER REPORTING PERIOD

Covid19- is a global health crisis with far reaching implications, the extent of which are still becoming apparent.

During this process, highest priority, has been the health and wellbeing of its staff, beneficiaries, and communities. The Organization has launched a pandemic response plan to protect its staff and manage the resilience of the services and support provided to the communities and beneficiaries.

Financially, Covid19- Pandemic has not affected adversely the activity statements of the Organization in 2020.

On the contrary, the Organization has had significant responsibilities to response Covid19- pandemic by secured more than 6 projects with its donors and partners valued nearly is 750\$K to serve the communities and support Non-Food-Item and WASH services to the most vulnerable people, along with the response for Community-based isolation center.

Special Thanks



With your support
We continue to succeed





WATANFoundation
www.WATAN.foundation